

Fine Jewellery, Watches & Silver, 20th Nov, 2025 09:30

- 1 An Edwardian gem-set elephant brooch, sculpted as a performing elephant with a ball on its trunk, encrusted with rose-cut diamonds and further decorated with a pearl and ruby as the eye, brooch fittings to the back, French boar and eagle mark for mixed gold and silver items (after 1905), 2.8 cm wide, 4.8 grams. **£300-500**



- 2 An enamel and diamond Gypsy ring, the central old-cut diamond with an estimated weight of 0.40ct, bead-set to a square mount on a black enamel ground, yellow metal stamped '18', size M, 6.0 grams. **£700-900**



- 3 An amethyst and split pearl necklace in 9ct gold, comprising a series of openwork foliate links, alternating with circular-cut amethysts and split pearls, attached to a popcorn link chain with spring-ring clasp, British assay marks, overall length 33.5 cm, 7.4 grams. **£200-300**



- 4 An opal cluster ring, the openwork mount with beaded details, claw-set with five precious opal cabochons, leading to a tapering band, yellow metal stamped '14K', size K, 5.5 grams. **£300-500**



- 5 Three bar brooches of hunting interest; to include two fox bar brooches, one sculpted as a leaping fox, the other features a fox head, both marked '15ct', one with gilt fittings; together with a hunting horn bar brooch, in two-toned metal stamped '15ct'; total weight of items 9.7 grams. (3) **£250-350**



Fine Jewellery, Watches & Silver, 20th Nov, 2025 09:30

- 6 A ruby and diamond half-hoop ring in 9ct gold, comprising three graduated circular-cut rubies, interspersed with diamond accents, leading to a tapering shank, Sheffield assay marks, size P, 2.5 grams. **£200-300**



- 7 A Victorian enamel and pearl ribbon brooch, containing a loop set with cobalt blue enamel, entwined with a ribbon engraved with floral decorations, star motifs adorned with split pearls, brooch fittings to the reverse, yellow metal testing as 14ct, 5.8 cm long, 18.3 grams.

Please note: Unless otherwise stated, lots have been tested using an electronic tester. This is a surface test only and is not a guarantee of metal purity. **£800-1,200**



- 8 A double-row natural saltwater pearl necklace, comprising two strands of off-round pearls, with an average 3.5 mm in diameter, hand-knotted to a box clasp encrusted with split pearls, unmarked pink coloured metal surface testing as 14ct, overall length 38.5 cm, 13.2 grams.

Together with a GCS verbal report stating the pearl to be natural saltwater, numbered 5786-0166.

Please note: Unless otherwise stated, lots have been tested using an electronic tester. This is a surface test only and is not a guarantee of metal purity. **£800-1,200**



- 9 A Victorian sapphire and diamond hinged bangle, comprising nine graduated cushion-cut sapphires, interspersed with old-cut diamond accents, to a hollow knife-edge band, fastened with a tongue clasp, unmarked yellow metal testing as 14ct, inner diameter 5.9 cm, cased, 15.8 grams.

Please note: Unless otherwise stated, lots have been tested using an electronic tester. This is a surface test only and is not a guarantee of metal purity. **£2,000-3,000**



- 10 An old-cut diamond with an associated ring mount in 18ct gold, the diamond of 1.33ct, measures 6.2 x 6.4 x 4.3 mm, the associated gypsy ring mount, pierced at the gemstone setting, Chester hallmarks, size Q, metal weight 10.0 grams. **£700-900**



Fine Jewellery, Watches & Silver, 20th Nov, 2025 09:30

- 11 An Edwardian natural saltwater pearl drop pendant on a woven seed pearl choker, the natural pearl capped with a surmount embellished with rose-cut diamond points, suspended on a woven seed pearl ribbon choker with diamond-set terminals, later-added clasp, unmarked white metal testing as platinum, pendant measures 1.7 cm, overall length 42.0 cm, 4.8 grams. Accompanied with a lab report from GCS stating the pendant as a natural saltwater pearl. (Ref.: 5785-3838)

Please note: Unless otherwise stated, lots have been tested using an electronic tester. This is a surface test only and is not a guarantee of metal purity. **£400-600**



- 12 A synthetic-ruby and keshi pearl cluster ring, centred with a 5.5mm diameter synthetic ruby within a keshi pearl border, between open scroll shoulders on an unmarked shank, yellow metal testing as 18ct, size M, 2.4 grams gross.

Please note: Unless otherwise stated, lots have been tested using an electronic tester. This is a surface test only and is not a guarantee of metal purity. **£100-200**



- 13 A bee brooch with emeralds and pearl, abdomen encrusted with round emeralds, a pearl mounted thorax, textured wings and legs, fitted with a hinged pin stem and roll-over safety catch, French hallmarked with eagle head (indicates 18ct), overall measures 2.3 x 1.9 cm, total weight of item 3.7 grams. **£250-350**



- 14 A pair of Etruscan Revival drop earrings set with garnet cabochons, the circular mount with twisted cable and granulation details, with tapered fringe below, to a hinged surmount of conforming design with later hook fittings, unmarked yellow metal testing as 18ct, 5.5 cm drop, 8.0 grams.

Please note: Unless otherwise stated, lots have been tested using an electronic tester. This is a surface test only and is not a guarantee of metal purity. **£400-600**



- 15 A three-stone half hoop ruby and diamond ring, the circular cut ruby flanked by two round brilliant cut diamonds; in claw mounts to a plain shank, marked '9ct', size Q, 3.0 grams. **£250-350**



Fine Jewellery, Watches & Silver, 20th Nov, 2025 09:30

- 16 A garnet cluster brooch, centred with an oval-cut garnet of 10.3 x 7.3 x 4.8 mm, collet-set to a tiered surround with three rows of circular-cut garnets, brooch fittings to the back, yellow metal stamped '10K PDN Thailand', 3.0 x 2.8 cm, 7.5 grams. **£150-250**



- 17 A sapphire and diamond cluster ring, collet-set with a cushion-cut sapphire, encircled by nine single-cut diamonds in a scalloped surround, between knife-edge shoulders, yellow metal stamped '18ct', ring head 8.6 x 7.8 mm, size K½, 2.4 grams. **£150-250**



- 18 An Early Victorian floral spray brooch, the flowerhead set with layers of carved shell petals with a garnet centre, to a stem mount and decorated with a sculpted dove, brooch fittings to reverse, unmarked metal testing as 14ct, 3.9 cm long, 4.8 grams.
Please note: Unless otherwise stated, lots have been tested using an electronic tester. This is a surface test only and is not a guarantee of metal purity. **£200-300**



- 19 A late Victorian five stone half hoop diamond ring (one stone deficient), the mixed old cut diamonds in pierced gallery setting, carved shoulders. Stamped 18ct'. Size P, 3.8 grams. **£400-600**



- 20 An Edwardian garnet and pearl floral pendant, the quatrefoil is composed of four oval-cut garnets in coronet settings, centred with a bead-set pearl in a star-shaped mount, suspending from a bail, unmarked yellow metal testing as 14ct, 3.4 cm drop, 6.5 grams.
Please note: Unless otherwise stated, lots have been tested using an electronic tester. This is a surface test only and is not a guarantee of metal purity. **£150-250**



Fine Jewellery, Watches & Silver, 20th Nov, 2025 09:30

- 21 A shell cameo brooch, depicting Nyx, the Goddess of the Night, carrying her children along with an owl, in a conforming mount testing as 14ct, with later-added brooch fittings, 4.3 x 3.5 cm, 10.2 grams.
Please note: Unless otherwise stated, lots have been tested using an electronic tester. This is a surface test only and is not a guarantee of metal purity. **£300-500**



- 22 A diamond solitaire ring, claw-set with a round brilliant-cut diamond, measuring approximately 5.8mm, with an estimated carat weight of 0.75ct, the white metal head leading to a yellow metal shank, surface tested as 18ct gold, size M1/2; 1.7 grams
Please note: Unless otherwise stated, lots have been tested using an electronic tester. This is a surface test only and is not a guarantee of metal purity. **£300-500**



- 23 A small group of jewellery items, comprising an amethyst and split pearl cluster brooch, in yellow metal surface tested as 18ct gold, a citrine-set ring in yellow metal surface tested as 18ct gold, size N, and a gem-set Etruscan style bar brooch, in 9ct yellow gold; 15.7 grams (3)
Please note: Unless otherwise stated, lots have been tested using an electronic tester. This is a surface test only and is not a guarantee of metal purity. **£200-300**



- 24 A natural saltwater pearl and diamond dress ring, centrally mounted with a button-shaped pearl, measuring 8.4 x 7.5 mm, between trefoil shoulders set with old-cut diamonds, estimated total weight 0.36ct, D-profile shank in yellow metal testing as 14ct, size K, 3.1 grams.
Accompanied by a laboratory report by GCS stating it as a natural saltwater pearl, with no indications of treatment.
Please note: Unless otherwise stated, lots have been tested using an electronic tester. This is a surface test only and is not a guarantee of metal purity. **£400-600**



- 25 An Edwardian natural saltwater pearl necklace, comprising a single row of graduated round pearls, sized from 2.5-5.9 mm, hand-knotted to a diamond floral cluster box clasp, with millgrained edge claw-set with a 4.2 mm old-cut diamond, unmarked white metal surface testing as 18ct, overall length 53.0 cm, 10.0 grams.
Together with a GCS verbal report stating the pearl to be natural saltwater. (Ref no.: 5786-0435)
Please note: Unless otherwise stated, lots have been tested using an electronic tester. This is a surface test only and is not a guarantee of metal purity. **£2,000-3,000**



Fine Jewellery, Watches & Silver, 20th Nov, 2025 09:30

- 26 A pearl-set cluster ring, of stylised floral design, the largest central cultured pearl surrounded by six smaller cultured pearls, interspersed with yellow metal bars, the yellow metal mount marked '585', size P; 7.3 grams **£200-300**



- 27 A garnet-set bar brooch, collet-set with an oval-cut garnet flanking two circular-cut garnets to the sides, on a flat bar with brooch fittings to the back, unmarked yellow metal testing as 9ct, 4.0 cm wide, in a case signed Gieves, 3.0 grams.
Please note: Unless otherwise stated, lots have been tested using an electronic tester. This is a surface test only and is not a guarantee of metal purity. **£150-200**



- 28 A pair of Victorian Etruscan Revival earrings set with amethyst, of fruiting vine design, comprising three oval-cut amethysts in cut-down mounts, decorated with vine leaves and granulation details, suspending from a surmount with twisted cable decorations, shepherd's crook fittings, yellow metal testing as 9ct, drop length 5.0 cm, 8.9 grams.
Please note: Unless otherwise stated, lots have been tested using an electronic tester. This is a surface test only and is not a guarantee of metal purity. **£150-250**



- 29 A three stone diamond ring featuring three graduating old European-cut diamonds with an estimated total carat weight of 0.89ct, to tapered shoulders leading to a ring shank marked '18ct' and 'Plat', size N, boxed, 2.95 grams. **£400-600**



- 30 A cultured pearl necklace, with a sapphire-set clasp, the single row necklace is set with uniform creamy-white pearls each measuring approximately 6.45mm, the floral design clasp is set in white metal, which is stamped 750 to the reverse, with a central stem which is set with a cluster of sapphires and fastens with a tongue and groove clasp; Length 84.0 cm, gross weight 49.5g. **£300-500**



Fine Jewellery, Watches & Silver, 20th Nov, 2025 09:30

- 31 Two pairs of cufflinks, to include a pair of square cufflinks by Mélick-Minassiant, each panel bead-set with nine table-cut rubies, yellow metal struck with French eagle head assay mark for 18ct, and maker's mark for Minassiant Arakel Melik, 1.2 cm wide; and a pair of oval panel cufflinks with taille d'épargne enamel on a scrolled foliate design, in yellow metal stamped '18K'; total weight of items 17.4 grams. (2) **£200-300**



- 32 A sapphire crossover ring, claw-set with three pale circular-cut sapphires, between bypass shoulders set with rose-cut diamond points, one deficient, leading to shank, unmarked metal surface testing as 14ct, size L½, 2.4 grams. Please note: Unless otherwise stated, lots have been tested using an electronic tester. This is a surface test only and is not a guarantee of metal purity. **£100-200**



- 33 A late 19th-century gem-set brooch, the round plaque centred with a pink paste and seed pearl cluster, with a belt across and scrolled handles to the sides, bow motif below, and further suspending a pointed drop pendulum, decorated with black taille d'épargne enamel, brooch fittings to the reverse, French eagle head assay mark for 18ct, 5.5 x 3.0 cm, 7.1 grams. **£200-300**



- 34 A sapphire-set gypsy ring, with oval setting, star-set with a round mixed-cut sapphire, to a D-profile shank, in 22ct yellow gold, hallmarked London, 1918, size K; 3.7 grams **£150-250**



- 35 A 19th-century French scent bottle, The cylindrical flask hand-painted with a shepherdess in a rural setting, gold mounts and maker's mark, probably for Jean-Élie Gourde, 5.2cm high; together with a shell cameo of a classical woman, her hair adorned with fruiting vines, in a yellow metal frame, and a pair of jade circular pendant earrings. **£250-350**



Fine Jewellery, Watches & Silver, 20th Nov, 2025 09:30

- 36 A gem-set dress ring in 9ct yellow gold, star-set with three circular-cut carnelians in a faceted mount, between grooved shoulders, British assay marks, size U, 7.3 grams. **£150-250**



- 37 A gate link bracelet with heart lock clasp, comprising five-row gate links with engraved patterns, completed with a heart-shaped lock clasp, pink metal stamped '9ct', overall length 20.0 cm, 22.0 grams. **£400-600**



- 38 A ruby belcher ring in 18ct yellow gold, centred with an oval ruby of 7.2 x 4.9 x 2.7 mm, in a grooved belcher setting tapering to a shank, London assay marks, size L, 5.2 grams **£200-300**



- 39 An old-cut diamond half-hoop ring, with an estimated total diamond weight of 0.80ct, comprising five graduated old-cut diamonds, interspersed with four rose-cut diamond points, in unmarked yellow metal surface testing as 18ct, size M½, 3.3 grams.
Please note: Unless otherwise stated, lots have been tested using an electronic tester. This is a surface test only and is not a guarantee of metal purity. **£400-600**



- 40 Luigi Pallotti - A late 19th-century Italian pearl, seed pearl and rose-cut diamond fringe necklace, the two articulated structured triangular centre panels with beaded and pierced scroll work, each with two rose-cut diamond and pearl clusters and a central pearl and diamond cluster suspending two tassels, the whole piece with a fringe of single stone pearls suspended on fine cable link chains, to an oval push-button clasp, Italian gold marks, signed for Pallotti, 40.0cm length, 45.1 grams. **£2,500-3,500**



Fine Jewellery, Watches & Silver, 20th Nov, 2025 09:30

- 41 A Victorian Alexandrite and diamond cluster ring, centred with an oval-cut colour-changing chrysoberyl measuring 6.0 x 5.0 x 3.2 mm, of bright bluish-green colour (greyish-purple under incandescent light), encircled by nine old-cut diamonds with an estimated total weight of 0.54ct, to a yellow metal shank surface testing as 18ct, ring head 1.4 x 1.2 cm, size M½, 7.3 grams.

Accompanied by a verbal report by GCS stating the chrysoberyl is of natural origin, India, with no indications of treatment. (Ref: 5786-0437)

Please note: Unless otherwise stated, lots have been tested using an electronic tester. This is a surface test only and is not a guarantee of metal purity. **£2,000-3,000**



- 42 A late Victorian diamond and ruby brooch, of scrolled foliate design, the openwork mount encrusted with old-cut diamonds and rose-cut diamond points, centred with a cushion-cut ruby in collet with twisted cable edge, measures 6.7 x 4.7 mm, unmarked metal surface testing as silver on 18ct, 4.6 x 2.7 cm, 12.9 grams.

Please note: Unless otherwise stated, lots have been tested using an electronic tester. This is a surface test only and is not a guarantee of metal purity. **£600-800**



- 43 A Belle Époque Colombian emerald cabochon dress ring, featuring an oval emerald double cabochon measuring 16.7mm x 13.9mm x 9.3mm, claw-set to a millgrained gallery adorned with rose-cut diamond points, between diamond-set lozenge shoulders leading to a knife-edge shank, unmarked white metal testing as platinum, size O, 5.8 grams.

Accompanied by a verbal report by GCS stating emerald is of Colombian origin, with a moderate amount of oil in fissures at time of testing (Ref: 5786-0603)

Please note: Unless otherwise stated, lots have been tested using an electronic tester. This is a surface test only and is not a guarantee of metal purity. **£3,000-5,000**



- 44 A French Belle Époque old-cut diamond lavalier necklace, with an estimated total diamond weight of 2.50ct, consisting of a pear-shaped old-cut diamond in claw-setting, suspending from a tapered and articulated bar with millgrain details set with a row of graduated single-cut diamonds, to an old European-cut diamond surmount, 3.8 cm drop, on a 43.0 cm long Figaro link chain, unmarked white metal surface testing as platinum, 5.7 grams.

Please note: Unless otherwise stated, lots have been tested using an electronic tester. This is a surface test only and is not a guarantee of metal purity. **£3,000-5,000**



Fine Jewellery, Watches & Silver, 20th Nov, 2025 09:30

- 45 A diamond-set fox brooch, sculpted as a running fox, fully encrusted with single-cut diamonds, with a ruby cabochon as eye, later brooch fittings to the reverse, unmarked white metal surface testing as 18ct, 4.0 cm wide, 4.1 grams.
Please note: Unless otherwise stated, lots have been tested using an electronic tester. This is a surface test only and is not a guarantee of metal purity. **£300-500**



- 46 An early 20th-century emerald bead and seed pearl necklace, comprising a row of round graduated emerald beads, alternating with seed pearls, fastens with an openwork lozenge-shaped box clasp, encrusted with three old-cut diamonds and rose-cut diamond points, French eagle head assay mark for 18ct, rubbed maker's mark, overall length 43.0 cm, 8.2 grams. **£250-350**



- 47 An Edwardian three-tone peacock feather brooch, with a textured finish, highlighted with a circular-cut sapphire, brooch fittings to verso, unmarked metal surface testing as 14ct, 4.6 cm wide, 3.3 grams.
Please note: Unless otherwise stated, lots have been tested using an electronic tester. This is a surface test only and is not a guarantee of metal purity. **£200-300**



- 48 A pair of Art Deco pink sapphires and diamond floral clip-on earrings, each sculpted as a stylised spray, centred with a circular-cut pink sapphire claw-set to a petal surround encrusted with old-cut diamonds, the stem is channel-set with an array of calibre-cut rubies, clip fittings to the back, unmarked white metal testing as platinum and 9ct, measuring 2.5 cm across, 12.6 grams.
Please note: Unless otherwise stated, lots have been tested using an electronic tester. This is a surface test only and is not a guarantee of metal purity. **£500-700**



- 49 An Edwardian unheated Burmese ruby dress ring, centred with an octagonal step-cut ruby of 2.00ct, claw-set between chenier shoulders with tapered baguette-cut diamonds, unmarked white metal testing as platinum, size J, 2.8 grams.
Together with a laboratory certificate from GCS confirming the ruby to be Myanmar in origin, with no indications of heating. (Ref. 5785-2354)
Please note: Unless otherwise stated, lots have been tested using an electronic tester. This is a surface test only and is not a guarantee of metal purity. **£2,000-3,000**



Fine Jewellery, Watches & Silver, 20th Nov, 2025 09:30

- 50 An Art Deco-style diamond-set brooch, the millgrained and pierced mount of scrolled design, encrusted with round brilliant-cut and single-cut diamonds, brooch fittings to the reverse, unmarked white metal testing as platinum on 18ct, 2.6 x 1.9 cm, 4.3 grams.
Please note: Unless otherwise stated, lots have been tested using an electronic tester. This is a surface test only and is not a guarantee of metal purity. **£500-700**



- 51 An Art Deco Ceylon star sapphire and diamond ring, featuring a domed cabochon sapphire of 44.50ct, displaying the optical effect of asterism with a six-rayed star, set in a twisted rope surround with single-cut diamond accents, white metal stamped 10% Iridium Plat, size K½, 20.3 grams.
Accompanied with a lab report by GCS stating sapphire is of Sri Lankan origin, with no indications of heating, measures 16.7 x 16.0 x 15.4mm. (Ref.: 5785-3383) **£3,000-5,000**



- 52 A pair of Art Deco two-toned cufflinks, circa 1925, the hexagonal engine-turned panels with engine-turned design and bar connections, marked '14k', in Antrobus case, 4.7 grams. **£300-500**



- 53 An Art Deco carved hardstone daisy brooch, flowerhead sculpted by frosted chalcedony, leaves realistically carved out of nephrite jade, stem embellished with an array of rose-cut diamond accents, brooch fittings with trombone clasp to the back, white metal bearing Austrian horse head assay mark for 14ct, maker's mark 'SL' for Sigmund Löbl (?), 7.5 cm wide, 10.1 grams. **£300-500**



- 54 A carved smoky quartz orchid brooch, the cattleya orchid flower head is realistically carved from a piece of smoky quartz, stigma highlighted with round brilliant-cut diamond accents, to a textured stem, double-prong clip brooch fittings to the reverse, white metal stamped '585', 5.8 x 4.5 cm, 17.2 grams. **£400-600**



Fine Jewellery, Watches & Silver, 20th Nov, 2025 09:30

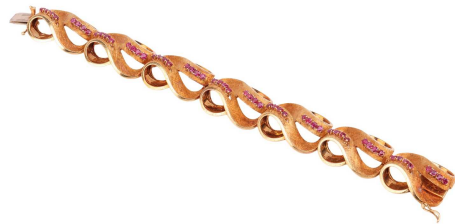
- 55 A modernist dress ring set with emerald and diamond, the abstract and organically textured mount features interspersed bar-set rectangular emeralds and round brilliant-cut diamonds in collets, unmarked yellow metal surface testing as 18ct, size L, 12.3 grams.
Please note: Unless otherwise stated, lots have been tested using an electronic tester. This is a surface test only and is not a guarantee of metal purity. **£700-900**



- 56 A Modernist multi-gem bangle, designed by Karl Stittgen, in a textured geometric openwork design, collet-set with an oval emerald cabochon, five round brilliant-cut diamonds in collets, five table-cut rubies and further three cultured pearls, completed with a hinge clasp, signed with maker's mark, and stamped '18K', inner diameter 6.0 cm, in original signed case, 69.6 grams. **£3,500-5,500**



- 57 An Italian ruby-set lemniscate link bracelet, comprising a series of looping links in Florentine finish, each embellished with rows of circular-cut rubies, completed with a concealed tongue clasp with push-in thumbpiece and a safety catch, yellow metal stamped '18K' and Italian registration number '297AL', overall length 17.5 cm, in a Gwen & Robinson case, 44.5 grams. **£3,000-5,000**



- 58 Attributed to Paul Flato - A gem-set slipper fur clip, in the form of a babouche with pom pom, the shoe bead-set with circular-cut rubies throughout with a rose-cut diamond border, with a pom pom centred with a rose-cut diamond and circular-cut sapphires, double prong clip fitting to the back, yellow metal marked '18', 3.6 x 1.7 cm, in a Harrods London case, 5.5 grams. **£2,000-3,000**



- 59 Grima - a diamond-set bombe ring, of ribbed design, embellished with four rows of single-cut diamonds, leading to a tapering shank, yellow metal marked '18K', size Q, 8.0 grams. Unsigned. This is a bespoke piece made alongside a band ring, which was signed by Grima and not being offered into sale. Although this piece is not signed, we have a copy of email correspondence with Grima authenticating this ring. **£1,000-2,000**



Fine Jewellery, Watches & Silver, 20th Nov, 2025 09:30

- 60 Kutchinsky - an enamel signet ring in 18ct yellow gold, the oval ring head set with yellow champleve enamel with the initials 'AH', to a mount with an abstract grooved fingerprint design, signed, London 1967, ring head 1.3cm x 1.0cm, size Q, 15.9 grams. **£700-900**



- 61 Kutchinsky - a diamond and enamel bow brooch in 18ct yellow gold, the central cluster of twelve round brilliant-cut diamonds, with an estimated total weight of 1.10ct, superimposed on curling green enamel ribbons with textured fringe edges, brooch fittings to reverse, signed, London 1971, 5.0 x 3.8 cm, 21.0 grams. **£1,500-2,000**



- 62 Kutchinsky - an emerald-cut diamond solitaire, featuring a central diamond of an estimated 5.45ct in claw setting, between shoulders set with tapered baguette-cut diamonds, leading to a D-profile shank with flat edge, signed, white metal testing surface testing as platinum, size O, 6.4 grams.
Please note: Unless otherwise stated, lots have been tested using an electronic tester. This is a surface test only and is not a guarantee of metal purity.
Please note: This stone has been graded in its mount, and the grading is intended as an opinion only. Results are subject to change following the stone being unset. **£20,000-25,000**



- 63 Filippini Fratelli - a bow bracelet, the wide mesh link bracelet, cinched with a scrolled foliate motif to the centre, completed with a concealed tongue clasp, Italian assay mark '750', and registration number '20 VR', overall measurement 19.5 x 2.8 cm, 50.00 grams. **£3,000-5,000**



- 64 A turquoise and diamond brooch, of an abstract firework design, the wire mount decorated with cubes, nine oval turquoise cabochons, and three round brilliant-cut diamond accents, brooch fittings to the reverse, and a suspension loop for necklace conversion, unmarked yellow metal testing as 18ct, 4.3 cm wide, 30.1 grams.
Please note: Unless otherwise stated, lots have been tested using an electronic tester. This is a surface test only and is not a guarantee of metal purity. **£1,200-1,800**



Fine Jewellery, Watches & Silver, 20th Nov, 2025 09:30

- 65 An angelskin coral and diamond dress ring, centred with a button-shaped corallium secundum of 12.6 mm, between bow shoulders adorned with two old-cut diamonds in millgrained collets, with an estimated total weight of 0.28ct, yellow metal stamped '18K', signed 'FLUHLER', size L, 17.0 grams. **£400-600**



- 66 A gem-set spray brooch, the stylised flowerheads with a sandblast finish, mounted with a potato-shaped cultured pearl of 7.4 mm, stem finial flush-set with a round brilliant-cut diamond accent, brooch fittings to the reverse, yellow metal stamped '750', 5.5 cm wide, 8.8 grams. **£600-800**



- 67 A lapis lazuli cross-over ring in 9ct yellow gold, featuring two spherical lapis lazuli bead finials of 8.0 mm, mounted to the tapered bypass shoulders, leading to a D-profile shank, London 1976, size E, 6.0 grams. **£300-500**



- 68 Kurt Weiss - a pair of cufflinks in 18ct gold, the square panels forged with bark effect textures, with toggle fittings to the back, London 1963, 1.7 cm wide, 14.6 grams. **£700-900**



- 69 A dog brooch in 18ct yellow gold, sculpted as a spaniel with engraved hair texture, brooch fittings to the back, London 1989, 4.0 cm wide, 20.2 grams. **£1,200-1,800**



Fine Jewellery, Watches & Silver, 20th Nov, 2025 09:30

- 70 A textured mesh link bracelet in 9ct yellow gold, the wide and flexible band is composed of flattened mesh links, diagonal stripey segments in a textured finish, completed with a concealed tongue clasp with thumb-piece, bearing London import marks, overall length 17.8 cm, 49.6 grams. **£800-1,200**



- 71 A diamond-set signet ring in 18ct yellow gold, the round ring head bead-set with round brilliant-cut diamonds, with an estimated total weight of 1.10ct, bevelled mount and shoulders decorated with screw-head motifs, British assay marks, ring head 1.4 cm wide, size W, 16.4 grams. **£1,000-1,500**



- 72 A single stone ruby ring, the oval cut ruby in a shield-shaped cartouche within a band that has been adapted from a chain ring to a rigid design by means of an inserted band to the interior. Unmarked, testing as 9 and 18 carat gold. Size L, 7.6grams.
Please note: Unless otherwise stated, lots have been tested using an electronic tester. This is a surface test only and is not a guarantee of metal purity. **£400-600**



- 73 A charm bracelet, comprising a series of double curb links and fastens with a spring-ring clasp, suspending twelve charms, including examples of a platypus, a souvenir charm from Madeira, a Capitoline Wolf, a Viking longship etc., most stamped as 9ct, a couple marked '14K' and 18ct, chain marks '14K', overall length 17.5 cm, 30.0 grams. **£1,200-1,800**



- 74 A purple star sapphire cabochon ring, collet-set with an oval star sapphire cabochon of dark purple colour, measuring 12.1 x 9.9 x 5.1 mm, to a D-profile shank, yellow metal marked '14C' surface testing as 14ct, size O, 3.8 grams.
Please note: Unless otherwise stated, lots have been tested using an electronic tester. This is a surface test only and is not a guarantee of metal purity. **£300-500**



Fine Jewellery, Watches & Silver, 20th Nov, 2025 09:30

- 75 A pair of purple star sapphire stud earrings, each containing a round star sapphire cabochon of dark purple colour, measuring 9.0 mm in diameter, in a conforming collet fitted with post and butterflies, unmarked yellow metal testing as 14ct, 5.3 grams. Please note: Unless otherwise stated, lots have been tested using an electronic tester. This is a surface test only and is not a guarantee of metal purity. **£200-300**



- 76 An Edwardian gem-set spider bar brooch, abdomen composed of an oval-cut greenish-yellow paste in a collet, 13.8 x 9.7 mm, decorated with a mounted pearl, with bar brooch fittings, stamped '9c', 6.0 cm wide, 6.8 grams. **£200-300**



- 77 A large citrine ring, featuring a large emerald-cut citrine in pale yellow colour, approximately measuring 24.3 x 15.9 mm, claw set on a yellow metal mount, wirework gallery to bifurcated shoulders with granulation details, shank unmarked, ring size P, total weight of item 11.7 grams. **£300-500**



- 78 A pair of diamond-set earrings, of ribbon design, set with round brilliant-cut and single-cut diamonds, peg and butterfly fittings, in unmarked white metal surface testing as 18ct, 1.9 cm drop, 3.4 grams. Please note: Unless otherwise stated, lots have been tested using an electronic tester. This is a surface test only and is not a guarantee of metal purity. **£300-500**



- 79 A cultured pearl bracelet with diamond-set clasp, comprising fifty-seven round cultured pearls of 8.0 mm, flanking bar spacers with rose-cut diamond points, completed with a stylised clasp encrusted with round brilliant-cut and baguette-cut diamonds, estimated total weight 2.30ct, unmarked white metal testing as 18ct, overall length 18.5 cm, 54.7 grams. Please note: Unless otherwise stated, lots have been tested using an electronic tester. This is a surface test only and is not a guarantee of metal purity. **£1,200-1,800**



Fine Jewellery, Watches & Silver, 20th Nov, 2025 09:30

- 80 A pair of sapphire and diamond cluster earrings, each centred with an oval-cut sapphire of dark blue colour, measuring 10.3 x 6.6 mm, encircled by thirteen old-cut diamonds with an estimated total weight of 2.60ct for the pair, screw-back fittings, unmarked metal surface testing as 18ct, 1.8 x 1.4 cm, 5.9 grams.
Please note: Unless otherwise stated, lots have been tested using an electronic tester. This is a surface test only and is not a guarantee of metal purity. **£1,000-2,000**



- 81 A diamond cluster ring, with an estimated total diamond weight of 6.20ct, featuring a principal old European-cut diamond weighing approximately 4.90ct, claw-set within a diamond surround, between shoulders further embellished with graduated diamonds, in white metal stamped 'PLAT', ring head 1.6 cm, size N, 7.9 grams.
Please note: This stone has been graded in its mount, and the grading is intended as an opinion only. Results are subject to change following the stone being unset. **£5,000-7,000**



- 82 A Colombian emerald and diamond cluster ring, featuring an octagonal-cut emerald of 9.3 x 8.9 x 6.15 mm, of approximately 3.50ct, encompassed by fourteen round brilliant-cut diamonds, with an estimated total weight of 1.38ct, between scrollwork shoulders leading to D-profile shank, in 18ct yellow gold with London hallmarks, ring head 14.8 x 15.3 mm, size O, 6.7 grams.
Accompanied by a verbal report from GCS, confirming its Colombian origin, with a minor amount of oil in fissures (at time of testing). (Ref no.: 5786-0436) **£6,000-8,000**



- 83 A single stone emerald-cut diamond ring, the diamond measuring approximately 8.8 x 6.6 x 4.6mm, in double four claw corner mounts, above a plain angled shank; Inscribed to the inside of the band 2.55 as stated weight and '750', size K, 4.7 grams.
Please note: This stone has been graded in its mount, and the grading is intended as an opinion only. Results are subject to change following the stone being unset. **£5,000-7,000**



- 84 A charm bracelet, comprising a series of cable links completed with a spring-ring clasp marked '9c', suspending sixteen charms, to include examples of three half sovereigns, a heart-shaped locket, a seal fob, a weather house charm, a shoe house charm, a Masonic pierced charm, and an engraved bracelet shortener etc., most charms struck with British assay marks for 9ct, overall length 20.0 cm, 46.4 grams. **£1,200-1,800**



Fine Jewellery, Watches & Silver, 20th Nov, 2025 09:30

- 85 A long fancy guard chain in 9ct gold, of pierced lozenge-shaped links, with granulated and engraved details, completed with a dog clip, Sheffield 1998, overall length 81.0 cm, 42.4 grams. **£800-1,200**



- 86 A heart citrine and diamond cluster pendant on chain, collet-set with a heart-cut citrine of 9.4 x 8.0 x 6.0 mm, in a surround set with diamonds estimated total weight of 0.34ct, tapered bail stamped '750', 2.2 cm drop, on a 40.0 cm long fine cable link chain stamped 'EFFY' and '585', 4.5 grams. **£400-600**



- 87 A diamond half-eternity ring, featuring a channel of twelve round brilliant-cut diamonds of graduating sizes, to a ring shank marked '750', size I, 3.1 grams. **£200-300**



- 88 A signet ring with parallel ridged decoration, to a tapering flat shank stamped '18ct', size V, 8.79 grams. **£500-700**



- 89 A pair of Edwardian diamond-set cufflinks, the square panel pierced with a star design, set with an old-cut diamond and diamond points in millgrained mounts, cable links connecting to toggle fittings, yellow metal stamped '18ct', panel measures 1.2 cm wide, in a case signed Commander Goldsmith and Watchmaker, 6.4 grams. **£450-550**



Fine Jewellery, Watches & Silver, 20th Nov, 2025 09:30

- 90 Boodle & Dunthorne - a two-toned Amaré ring in 18ct gold, the central recessed band set with three round brilliant-cut diamonds, estimated total weight 0.30ct, signed, London 2000, size L, 7.5 grams.
Boxed, no papers. **£800-1,200**



- 91 Two strands of beaded necklaces; to include a single row of faceted tanzanite beads, completed with a foliate hook clasp, unmarked yellow metal testing as 14ct, overall length 47.5 cm; and a strand of button-shaped cultured pearls, with an openwork navette-shaped fish hook clasp, in white metal stamped '14K', 41.0 cm long; 30.2 grams. (2)
Please note: Unless otherwise stated, lots have been tested using an electronic tester. This is a surface test only and is not a guarantee of metal purity. **£200-300**



- 92 A yellow diamond set cross pendant; the rounded 18 carat white gold cross pavé set with round brilliant cut yellow diamonds, to a two-stone bale and suspended on a fine 18 carat white gold herringbone link chain. Total diamond weight estimated to be approximately 0.70 carats. Cross 25mm x 19mm, chain 40.5cm. Gross weight 7.4 grams. **£800-1,200**



- 93 A diamond-set full eternity ring, set with twenty-one round brilliant cut diamonds, measuring approximately 2.7mm each, with an estimated total diamond carat weight of 1.47ct, channel and bar-set to an unmarked yellow metal mount, surface tested as 18ct gold, size N; 6.2 grams
Please note: Unless otherwise stated, lots have been tested using an electronic tester. This is a surface test only and is not a guarantee of metal purity. **£500-700**



- 94 A gem-set arabesque pendant, consisting of an emerald-cut synthetic ruby in the centre, claw set on a lozenge-shaped openwork mount, with arabesque foliate details, edged with faceted garnets, to a similarly stylised bail, yellow precious metal Middle Eastern hallmarked as '18' and stamped as '750', overall measuring 5.4 x 2.9 cm, total weight of item 10.3 grams. **£300-500**



Fine Jewellery, Watches & Silver, 20th Nov, 2025 09:30

- 95 A garnet cluster ring, comprises an oval garnet circumscribed by eight round garnets, claw set on a yellow precious metal mount with granulation details, framed with a bright cut engraved surround with blue enamel edge, textured and pierced scroll work on the under gallery and shoulders, to a tapered shank, Middle Eastern hallmarked '18' and marked '750', ring head approximately measures 1.6 x 1.2 cm, ring size N½, total weight of item 8.2 grams. **£200-300**



- 96 A heart-shaped pendant with diamonds, comprises a hollow heart pendant in yellow precious metal, fully pavé set with rose-cut diamonds, engraved scrollwork on the edges, pierced lattice and daisy motif at the reverse, suspending on a dove surmount with diamond and ruby accents, to a shepherd's crook bail, Syrian hallmarked '12ct', overall measuring 4.9 x 2.6 cm, total weight of item 10.0 grams. **£500-700**



- 97 A single-strand cultured pearl necklace, comprising round cultured pearls of 6.7 mm, hand-knotted to an octagonal fish-hook clasp embellished with a pearl accent, in 9ct white gold, Birmingham assay marks, 64.0 cm in length, in a Cairncross case, 37.0 grams. **£200-300**



- 98 An emerald and diamond ring, comprises a deep green coloured emerald with sub translucent transparency, approximately measuring 12.0 x 7.0 mm, bar set on a yellow precious metal mount, flanked by diamond accents in a chevron pattern on knife-edge shoulders, to a tapered D-profile shank, marked as '750', ring size O, total weight of item 8.5 grams. **£800-1,200**



- 99 A braided collar necklace in 18ct yellow gold, composed of eight textured and flattened snake link chains, completed with a concealed tongue clasp, with London import marks and sponsor's mark of S J Rose & Son, overall length 44.0 cm, 93.6 grams. **£4,000-6,000**



Fine Jewellery, Watches & Silver, 20th Nov, 2025 09:30

- 100 A two row cultured pearl necklace, with a diamond set clasp; the uniform sized Akoya pearls with silver pink lustre, to a shaped circular clasp, set with an outer border of undulating baguette cut diamonds, the centre set with nine round brilliant t and six marquise cut diamonds. Total diamond weight estimated to be approximately 3.50 carats. Pearls approximately 8.48-8.93mm. Overall length, shorter row 59cm, longer row 62cm. Gross weight 128.7grams. **£1,200-1,800**



- 101 A charm bracelet, with twelve charms, the majority hallmarked 9ct gold, including a London Transport double-decker bus, a carriage, a lantern, a Bible, a kettle, a horseshoe, a coin case, and other items, to a 9ct gold oval fancy link bracelet, measuring approximately 18.5cm; 28.8 grams **£500-700**



- 102 A diamond-set dress ring, of tapered and fluted design, with three decorative bands of round brilliant-cut diamonds, estimated total weight 0.20ct, in two-toned metal stamped '18ct', size N, 6.51 grams. **£500-700**



- 103 An emerald dress ring, featuring a deep green coloured emerald with sub-translucent transparency, approximately measuring 11.1 x 12.1 mm, bar set on a yellow metal mount, with trumpeted shoulders to a court profile shank, unmarked, ring size N, total weight of item 10.3 grams. **£1,000-1,500**



- 104 A diamond and enamel necklace; the central set curved panel pavé set with tonal champagne and cognac coloured diamonds around rectangular sections of alternating textured gold and enamelled ribbonwork; suspended from two cable link chains in yellow and burnished blackened metal, stamped '21'ct. Overall length 49cm. Gross weight 20.7 grams. In Al Muftah Jewellery case. **£1,500-2,000**



Fine Jewellery, Watches & Silver, 20th Nov, 2025 09:30

- 105 A diamond solitaire ring, comprising a round brilliant-cut diamond of 0.31ct, of bypass design, to a platinum ring shank, size K, accompanied by GIA diamond dossier and Samara James Box, 4.1 grams. **£150-250**



- 106 A synthetic sapphire dress ring in 9ct gold, the square-cut synthetic sapphire of 7.9 x 7.8 mm, in a conforming illusion surround with diamond accents, British assay marks, size T, 3.7 grams. **£150-250**



- 107 A sapphire and diamond dress ring, the egg-shaped ring head collet-set with an oval-cut sapphire of 7.0 x 5.5 x 4.2 mm, in surround bead-set with round brilliant-cut diamonds, leading to tapering shank in yellow metal marked '750', ring head 1.5 x 1.1 cm, size N, 7.2 grams. **£800-1,200**



- 108 An anchor link bracelet, fastened with a damaged lobster clasp, marked as '750', link width 8.6 mm, overall measuring 23.5 cm in length, total weight of item 34.00 grams. **£1,800-2,200**



- 109 A diamond solitaire ring in 18ct white gold, centred with a round brilliant-cut diamond of 1.01ct, in a trellis setting with millgrain edges, encrusted with diamond accents and two tapered baguette-cut diamonds on the shoulders, tapering shank with British assay marks, London 2022, size J½, 3.6 grams.
The principal diamond consists of laser inscription related to a GIA diamond grading report, which states the colour grade as F and the clarity as SI1. **£1,200-1,800**



Fine Jewellery, Watches & Silver, 20th Nov, 2025 09:30

- 110 A pear-cut fancy yellow diamond solitaire ring, of 1.31ct, in a closed-back claw setting leading to a D-profile shank with flat edges, two-toned metal stamped '18K/PLAT', size J, 3.8 grams.
Inscribed with GIA digital report number 5181634658, which states the diamond is of natural origin, with a colour grading Fancy Yellow, and clarity grade VS1. **£2,000-3,000**



- 111 A charm bracelet, the fancy bar and link bracelet marked '14k', suspending nineteen various charms, including a turquoise set sailing ship and a bicycle, mostly 14ct charms (some 9ct, some 18ct). Gross weight 33 grams. **£1,200-1,800**



- 112 A diamond-set coil ring, by Maria Grazia Cassetti, centrally embellished with an applied zig-zag motif encrusted with diamond accents, white metal signed and bearing Italian assay marks '750' and registration marks, 1.5 cm wide, size Q, 19.7 grams. **£1,500-2,000**



- 113 A diamond-set solitaire ring, composed of an illusion-set round brilliant cut diamond, measuring approximately 4.5mm, with an estimated carat weight of 0.36ct, the high gallery leading to foliate-style shoulders, to a white metal shank marked '18ct', size M1/2; 3.6 grams **£400-600**



- 114 A single stone diamond ring in a crossover design, the round brilliant cut diamond in four claw mount in a crossover setting above a diamond set band; the diamond is estimated to be H/J, I3 and weigh 0.32 carats. In platinum mount. Size N, 6.4 grams. together with a wedding band ensuite of conforming shape, the centre set with a partial row of diamonds, weight 0.05 carats, 2.6grams. **£400-600**



Fine Jewellery, Watches & Silver, 20th Nov, 2025 09:30

- 115 A signet ring, the vacant oval head leading to a tapering D-profile shank, yellow metal stamped '18ct', size Y, 10.61 grams. **£500-700**



- 116 A Bismarck link bracelet, with a row of applied heart motifs throughout the centre, completed with a tongue clasp and heart-shaped thumb piece, yellow metal stamped '750', 17.5 cm long, 1.3 cm wide, 20.0 grams. **£1,200-1,800**



- 117 Two opera-length cultured pearl necklaces; the first featuring oval-shaped cultured pearls of approximately 9.0 x 7.75 mm each, of cream body colour with silver pink lustre, length approximately 332 cm; the second featuring off round, oval and teardrop shaped cultured pearls, ranging from 8.0 to 14.0 mm each, individually knotted to a toggle clasp in unmarked yellow metal, surface testing as 14ct, length approximately 165cm.
Please note: Unless otherwise stated, lots have been tested using an electronic tester. This is a surface test only and is not a guarantee of metal purity. **£500-700**



- 118 A diamond-set tennis bracelet, bezel-set with forty-six round brilliant-cut diamonds, measuring approximately 3mm each, with an estimated total carat weight of 4.60ct, to an 18ct white gold mount with push bar clasp and safety catches, with attached heart charm, the bracelet measuring approximately 20cm long; 15.3 grams **£1,000-1,500**



- 119 A hinged bangle in the form of a nail, pavé set to the centre with diamonds, hinged to the reverse, yellow metal stamped '750', total diamond weight estimated to be in excess of 2.00 carats, internal diam. 5.5cm. Gross weight 29.8 grams. **£1,500-2,500**



Fine Jewellery, Watches & Silver, 20th Nov, 2025 09:30

- 120 A sapphire and diamond cluster ring, centred with a cushion-cut greyish-blue sapphire, measuring 10.8 x 9.4 x 4.0 mm, encircled with fourteen single-cut diamonds, leading to a D-profile shank in unmarked white metal, surface testing as 18ct, ring head 1.8 x 1.6 cm, size Q, 7.6 grams.
Please note: Unless otherwise stated, lots have been tested using an electronic tester. This is a surface test only and is not a guarantee of metal purity. **£800-1,200**



- 121 A single row cultured pearl necklace, comprising a series of round cultured pearls with an approximate diameter of 8.0 mm, hand-knotted to a floral box clasp sculpted as a flowerhead with diamond highlight to the centre, yellow metal stamped '14K', overall length 40.5 cm, 34.6 grams. **£300-500**



- 122 A diamond line bracelet in 18ct white gold, by Wempe, with an estimated total diamond weight of 1.40ct, comprising a series of round brilliant-cut diamonds in beaded articulated mounts, with larger diamond spacers, completed with a concealed tongue clasp, British assay marks, 19.5 cm in length, cased, 7.9 grams. **£700-900**



- 123 A cultured pearl necklace, a pair of earrings and a brooch; the necklace comprising a row round cultured pearls graduating from 6.2 to 9.5 mm, hand-knotted to a foliate fish hook clasp signed for Mikimoto and stamped 'S' for silver, 46.0 cm long; a pair of cultured pearl stud earrings of 8.5 mm, cream body with rose overtones, fittings in yellow metal stamped '750'; and a foliate brooch in 9ct gold with five cultured pearl accents, 4.9 cm wide; total weight of items 52.0 grams. (3) **£150-250**



- 124 A pair of stud earrings set with liddicoatite tourmaline slices, of rounded triangular form, tourmaline panel corner-set with post and butterfly fittings, unmarked white metal surface testing as 18ct, 15.7 x 16.2 mm, 6.6 grams.
Please note: Unless otherwise stated, lots have been tested using an electronic tester. This is a surface test only and is not a guarantee of metal purity. **£100-200**

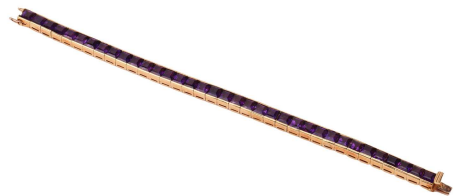


Fine Jewellery, Watches & Silver, 20th Nov, 2025 09:30

- 125 A pair of amethyst earrings, of twisted rope design, each set with an oval-cut amethyst, post and butterfly fittings, unmarked yellow metal surface testing as 14ct, 2.0 cm drop, 4.2 grams. Please note: Unless otherwise stated, lots have been tested using an electronic tester. This is a surface test only and is not a guarantee of metal purity. **£150-250**



- 126 An amethyst line bracelet in 18ct yellow gold, comprising thirty-six square table-cut amethysts of 5.0 mm, channel-set to articulated link mounts, completed with a concealed tongue clasp with push-in thumbpiece, London 1973, maker's mark rubbed, overall length 19.5 cm, in a S. J. Phillips fitted case, 33.2 grams. **£1,000-1,500**



- 127 A two-tone dress ring in 18ct gold, of diagonally fluted design, bearing British import marks, size N, 8.8 grams. **£800-1,200**



- 128 A large heart-shaped emerald dress ring, the emerald measures 13.8 x 15.0 x 8.2 mm, claw-set to the centre between trumpeted shoulders of scroll form, embellished with baguette-cut diamonds and sapphire cabochon terminals, leading to a tapering flat shank, unmarked yellow metal testing as 18ct, size O, 11.1 grams. Please note: Unless otherwise stated, lots have been tested using an electronic tester. This is a surface test only and is not a guarantee of metal purity. **£3,000-5,000**



- 129 An anchor link bracelet, fastened with lobster clasp, marked as '750', link width 8.6 mm, overall measuring 23.0 cm in length, total weight of item 34.85 grams. **£1,800-2,000**



Fine Jewellery, Watches & Silver, 20th Nov, 2025 09:30

- 130 A ruby and diamond-set ring, composed of an oval mixed-cut ruby, measuring approximately 8mm x 5.8mm, flanked by two marquise-cut diamonds, measuring approximately 8mm x 4.3mm each, with an estimated total diamond carat weight of 1.40ct, in a white metal mount marked '18ct', size P1/2; 5.7 grams **£1,000-2,000**



- 131 A cameo dress ring, the oval agate carved with a side profile of a lady, set to a conforming surround with single-cut diamonds to the shoulders, to a tapering shank, yellow metal stamped '750', ring head 2.4 x 2.0 cm, size O, 8.2 grams. **£500-700**



- 132 A cultured pearl necklace and a filigree cross pendant on chain; the pearl necklace comprising a single row of graduated round cultured pearls, sizing from 3.2-7.3 mm, to a fluted fish hook clasp in yellow metal stamped '9ct', overall length 55.0 cm; and a filigree cross pendant with beaded details and a red stone accent to the centre, in yellow metal marked '18c', 5.5 cm drop, on a 69.0 cm long cable link chain surface testing as 14ct; total weight of items 24.3 grams. (2)



Please note: Unless otherwise stated, lots have been tested using an electronic tester. This is a surface test only and is not a guarantee of metal purity. **£400-600**

- 133 A diamond solitaire ring and a diamond four-stone ring; The diamond solitaire featuring a central round brilliant-cut diamond of estimated 0.57ct, in a high-protruding claw-set mount, to a white metal band engraved with lozenge cartouche detail, surface testing as base metal, size J, 2.6 grams; The four stone diamond ring, comprising four round brilliant-cut diamonds in a channel-setting of rectangular form, to a white metal ring band surface testing as 14ct, size J 1/2, 2.9 grams. (2).



Please note: Unless otherwise stated, lots have been tested using an electronic tester. This is a surface test only and is not a guarantee of metal purity. **£400-600**

- 134 A South Sea cultured pearl and diamond pendant, with a pair of matching stud earrings; the pendant comprising a large cultured pearl of 12.7 mm, mounted under a diamond-set wire bail; the pair of earrings with conforming design and size of pearls, fitted with ear posts and butterflies; unmarked white metal testing as 9ct, 1.9 cm drop, total weight of items 14.1 grams. (2)



Please note: Unless otherwise stated, lots have been tested using an electronic tester. This is a surface test only and is not a guarantee of metal purity. **£200-300**

Fine Jewellery, Watches & Silver, 20th Nov, 2025 09:30

- 135 A coral and diamond cocktail ring, featuring a polished corallium rubrum set in a conforming collet, embellished with five marquise-cut diamonds to the sides, with an estimated total weight of 0.30ct, white metal stamped 'pt900', ring head measures 3.6 x 2.0 cm, size M½, 20.0 grams. **£500-700**



- 136 A carved jadeite Buddha necklace, the carved Buddha measures 5.2 x 5.0 cm, with a drilled hole connecting an adjustable braided cord necklace with beaded terminals, 64.4 grams. **£300-500**



- 137 A two row cultured pearl necklace, to an 18 carat gold and diamond set clasp, the uniform sized Akoya pearls with a white pink lustre, to a ribbed rectangular centre with nine stone, eight-cut, pavé-set diamond centre, concealed clasp. Stamped '750' with Italian control marks. Pearls 8.15 mm- 8.54mm. Shorter row 42cm, longer row 44.5cm. Gross weight 90.5 grams. **£600-800**



- 138 A large amethyst and topaz cocktail ring, comprising an oval Swiss blue topaz and a fancy-cut amethyst in claw settings, embellished with round brilliant-cut diamond trefoils on bifurcated shoulders, leading to a flat shank, yellow metal stamped '14K 585', ring head 3.0 x 2.5 cm, size T, 17.1 grams. **£300-500**



- 139 A large topaz pendant, a cocktail ring and a pair of earrings en suite; the pendant consists of a large fancy cut Swiss blue topaz, approximately measuring 3.1 x 2.2 cm, claw set to a bifurcated wire bail; a matching cocktail ring with a conforming fancy-cut topaz of 2.0 x 1.2 cm, claw-set to a D-profile shank, size Q; and a pair of lantern-cut topaz stud earrings, in collet setting with ear post and omega clip fittings, 1.8 x 1.7 cm; yellow metal stamped and surface testing as 14ct, 41.5 grams. (3)



Please note: Unless otherwise stated, lots have been tested using an electronic tester. This is a surface test only and is not a guarantee of metal purity. **£300-500**

Fine Jewellery, Watches & Silver, 20th Nov, 2025 09:30

- 140 A large synthetic ruby pendant on chain, featuring a large oval-cut synthetic ruby of 18.0 x 13.5 x 8.5 mm, in a claw setting with tapered bail, yellow metal testing as 9ct, on a 60.0 cm long flat anchor link chain with lobster clasp, pink metal stamped '10K', 9.8 grams.
Please note: Unless otherwise stated, lots have been tested using an electronic tester. This is a surface test only and is not a guarantee of metal purity. **£300-500**



- 141 A double row cultured pearl necklace with 9ct gold clasp, comprising two rows of round cultured pearls, approximately 6.5 mm, hand-knotted to a rectangular box clasp embellished with pearl and ruby accents, British hallmarks, overall length 68.0 cm, 76.5 grams. **£400-600**



- 142 A circular link bracelet with mounted coins, comprising a series of annulets, alternating with five 1/10oz Krugerrands in collets, completed with fold-over clasp, yellow metal marked '18ct', overall length 18.5 cm, 32.00 grams. **£1,500-2,000**



- 143 A peridot ring, featuring an oval mixed-cut peridot, approximately measuring 8.2 x 6.7 mm in size, bar set to a plain and tapered D-profile shank in yellow metal, unmarked, ring size O, total weight of item 8.5 grams. **£300-500**



- 144 A pink sapphire and diamond pendant on chain, featuring an oval-cut pink sapphire of 7.3 x 5.2 x 3.5 mm, claw-set under an integral bail set with a tapering baguette-cut diamond, 1.3 cm drop, on a 40.0 cm long fox tail chain, British assay marks for 18ct gold, 4.8 grams. **£400-600**



Fine Jewellery, Watches & Silver, 20th Nov, 2025 09:30

- 145 A pair of heavy stud earrings, in the form of a button with a textured border, peg and butterfly fittings, yellow metal stamped '18ct', 2.2 cm wide, 44.85 grams. **£2,000-3,000**



- 146 A diamond solitaire ring in platinum, claw-set with a round brilliant-cut diamond of 2.01ct, between tapered shoulders to D-profile shank, British assay marks, size P, 6.3 grams. Accompanied by a GIA diamond grading report, stating natural origin, with a colour grade H, and clarity grade SI1, dated July 2007. **£4,000-6,000**



- 147 A diamond three stone half hoop ring; the three slightly graduated round brilliant cut diamonds in claw mounts to a plain D shaped shank. Total diamond weight estimated to be slightly under 1 carat. Stamped platinum, with sizing band. Size inc. band N1/2 Gross weight 3.7grams. **£300-500**



- 148 A diamond-set cross pendant, claw-set with eleven round brilliant cut diamonds, with an estimated total carat weight of 0.33ct, in a 9ct white gold mount, to a trace link chain with bolt ring clasp, in white metal marked '375', measuring approximately 51cm; 2.2 grams **£200-300**



- 149 A cultured pearl and diamond ballerina ring, centred with a round pearl of 9.2 mm, greyish body colour with peacock overtones, framed by a bypass ballerina surround encrusted with tapering baguette-cut diamonds, leading to shank stamped 'PT', and Italian maker's mark '721 AL', ring head 2.1 x 1.7 cm, size M, 6.8 grams. **£400-600**



Fine Jewellery, Watches & Silver, 20th Nov, 2025 09:30

- 150 An emerald and diamond-set pendant, claw-set with a marquise-cut emerald measuring approximately 10mm x 5.5mm, with a crossover diamond-set surround, with baguette-cut and round brilliant-cut diamonds of graduated sizes, to a trace link chain with bolt ring clasp marked '750', measuring approximately 45cm; 7.2 grams **£500-700**



- 151 A floral spray brooch set with diamond and ruby, in the form of a stylised tulip, with an estimated total diamond weight of 5.85ct, encrusted with old-cut and single-cut diamonds, highlighted with a pear-cut and a circular-cut ruby, double-prong brooch fittings to the reverse, unmarked white metal testing as platinum, overall dimension 6.5 x 5.5 cm, 20.3 grams.

Please note: Unless otherwise stated, lots have been tested using an electronic tester. This is a surface test only and is not a guarantee of metal purity. **£1,000-1,500**



- 152 An Art Deco-style diamond-set bracelet, comprising a series of hinged articulated links with geometrical design, encrusted with round brilliant-cut and princess-cut diamonds throughout, with an estimated total weight of 13.00ct, fastens with a concealed tongue clasp and a lever safety catch, white metal bearing the mark 'K18', 18.0 cm long, 55.9 grams. **£5,000-7,000**



- 153 A diamond-set toggle necklace, comprising a snake chain, terminated with a diamond-set torpedo pendant, and a hexagonal hoop to the other end, in white metal struck with Cyprus Aphrodite assay marks indicating 18ct (1995-2001), pendant 2.2 cm long, overall length 50.0 cm, 11.7 grams. **£700-900**



- 154 A diamond eternity ring, grain-set with twenty round brilliant-cut diamonds, with an estimated total carat weight of 1.72ct, the ring engraved with scrolled detail, in white metal surface testing as 18ct, size N ½, 5.2 grams. Please note: Unless otherwise stated, lots have been tested using an electronic tester. This is a surface test only and is not a guarantee of metal purity. **£800-1,200**



Fine Jewellery, Watches & Silver, 20th Nov, 2025 09:30

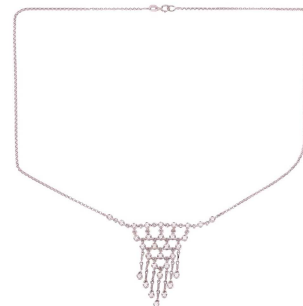
- 155 A morganite and diamond cluster pendant on chain, centred with a square cushion-cut morganite of pale peach colour, claw-set to a tiered conforming surround set with diamonds, on a loop bail, two-toned metal, 2.0 cm drop; on a 46.0 cm long fine cable link chain in pink metal; all signed 'EFFY' and marked '14K', 3.7 grams. **£300-500**



- 156 A half hoop diamond eternity ring, channel set in 18 carat white gold with eleven princess cut diamonds. Total diamond weight estimated to be 0.39 carats. Size M, 3.6 grams. **£200-300**



- 157 A diamond-set fringe necklace, the necklace featuring a lattice-style fringe pendant to the front, composed of connected bezel-set round brilliant diamonds, the thirty-one diamonds with an estimated total carat weight of 1.24ct, to a fine belcher link chain and bolt ring clasp, in white metal marked '750', the necklace measuring approximately 46.5cm; 9.1 grams **£700-900**



- 158 A diamond solitaire ring, featuring a central claw-set princess-cut diamond of estimated 0.44ct, to tapered shoulders leading to a yellow metal ring shank marked '750', size H ½, 4.2 grams. **£400-600**



- 159 An emerald and diamond half-hoop ring, comprising three oval-cut emeralds, flanking four round brilliant-cut diamonds, with an estimated total weight of 0.12ct, in a collet setting to a tapering flat shank, yellow metal struck '750', size N, 3.5 grams. **£250-350**



Fine Jewellery, Watches & Silver, 20th Nov, 2025 09:30

- 160 A hollow heart pendant, consisting of a heart-shaped dome, with pierced cut-outs of crescent and stars, with a florentine finish, suspending from a bail with similar patterns, yellow precious metal marked as '18kt 750', overall measuring 3.0 x 3.5 cm (including bail), total weight of item 8.9 grams. **£500-700**



- 161 A ruby and diamond half-hoop ring in 18ct gold, comprising alternating navette-cut rubies and marquise-cut diamonds, interspersed with round brilliant-cut diamond accents, leading to a flat shank, British import marks, size P½, 4.4 grams. **£300-500**



- 162 A bracelet with heart lock clasp, comprising hollow figure-of-eight links completed with a heart-shaped lock clasp, engraved with initials and dates, pink metal stamped '9ct', 18.0 cm long, 14.3 grams. **£300-500**



- 163 An amethyst dress ring, comprises a round rose cut amethyst, approximately measuring 9.7 mm across, tension set to a yellow precious metal mount, with trumpeted shoulders to a D-profile shank, Italian hallmarked as '750', ring size O, total weight of item 8.9 grams. **£400-600**



- 164 An Albert chain, comprising a series of heavy curb links, terminated with a T-bar and a dog clip to the other end, unmarked yellow metal surface testing as 18ct, overall length 44.5 cm, 68.55 grams.
Please note: Unless otherwise stated, lots have been tested using an electronic tester. This is a surface test only and is not a guarantee of metal purity. **£4,000-6,000**



Fine Jewellery, Watches & Silver, 20th Nov, 2025 09:30

- 165 A five-row cultured pearl necklace with a diamond-set centre, the uniform-sized pearls, of circular and slightly ovoid shapes, with yellow metal bar spacers and push-in bar clasp. shortest row 37cm, longest approximately 41cm. Average diam. approximately 3.5mm. The open-work diamond cluster centre set with seven round brilliant cut diamonds in a spiralling cluster to a scalloped diamond border. Total diamond content estimated to be approximately 1.35 carats. Yellow metal unmarked, tests as 18 carat. Gross weight 45.1 grams. Please note: Unless otherwise stated, lots have been tested using an electronic tester. This is a surface test only and is not a guarantee of metal purity. **£500-700**



- 166 A pair of mabe pearl earrings in 18ct yellow gold, each centred with a round mabe pearl of 13.4 mm in a collet, in a braided two-tone surround with diamond accents, ear post and omega clip fittings, London 1990, 2.2 cm wide, 13.3 grams. **£200-300**



- 167 A sapphire and diamond cluster ring in 18ct white gold, the square ring head centred with a cushion-cut sapphire of 5.9mm x 5.9mm x 3.6mm, in a diamond-set surround with an estimated total weight of 0.90ct, London assay marks, ring head 1.5cm wide, 8.4 grams. **£700-900**



- 168 A pair of earrings set with old-cut diamonds, the scalloped hook-shaped mount, each illusion-set with six old-cut diamonds, with an estimated total weight of 2.16ct for the pair, fitted with post and a hinged back, unmarked white metal testing as 9ct, 2.8 cm drop, 8.1 grams. Please note: Unless otherwise stated, lots have been tested using an electronic tester. This is a surface test only and is not a guarantee of metal purity. **£400-600**



- 169 A diamond solitaire ring, claw-set with a round brilliant cut diamond, with an estimated carat weight of 0.25ct and an estimated colour and clarity grade of G, I1, to an 18ct white gold mount, size L; 2.2 grams **£200-300**



Fine Jewellery, Watches & Silver, 20th Nov, 2025 09:30

- 170 A garnet bee pendant, with a round colourless spinel highlight, four pear-shaped garnets and a marquise garnet, assembled as a figural butterfly, claw set on a yellow precious metal mount, to a bail, marked as '750', overall measuring 1.4 x 2.1 cm, total weight of item 4.3 grams. **£300-500**



- 171 A diamond-set cultured pearl bracelet, comprising four rows of round cultured pearls measuring 3.5 mm, with linked intervals adorned with round brilliant-cut diamonds, estimated total weight 0.90ct, conforming lever clasp, bearing French eagle head assay mark for 18ct, and maker's mark of Roger Mathon, overall length 18.0 cm, 33.1 grams. **£400-600**



- 172 A pair of multi gem-set chandelier earrings, the star-shaped clusters set with vari-coloured sapphires, amethysts, garnets and other gemstones and suspending seed pearls. to hinged post fittings. 6.1cm length, Gross weight 11.7 grams **£200-300**



- 173 A garnet bead bavette necklace, comprising four rows of uniformed round garnet beads, interspersed with metal spacers, fastens with a lobster clasp in unmarked yellow metal testing 9ct, overall length 45.0 cm, total weight 62.6 grams. Please note: Unless otherwise stated, lots have been tested using an electronic tester. This is a surface test only and is not a guarantee of metal purity. **£200-300**



- 174 A sapphire and diamond dress ring, consisting of eight baguette-cut sapphires, channel set in a yellow metal mount, further six brilliant diamonds with an estimated total weight of 0.36ct, pavé set on each side of the under gallery, scrolled shoulders to a tapered flat shank, marked as '18', ring size O, total weight of item 9.6 grams. **£700-900**



Fine Jewellery, Watches & Silver, 20th Nov, 2025 09:30

- 175 A black opal pendant on chain, the oval-shaped black opal of 17.4 x 10.6 x 4.9 mm, displaying vivid spectral play-of-colour on a dark greyish-blue ground, in a millgrained collet on tapering bail, yellow metal testing as 18ct, 2.5 cm drop, on a rolled gold chain, 2.5 grams weighable.
Please note: Unless otherwise stated, lots have been tested using an electronic tester. This is a surface test only and is not a guarantee of metal purity. **£150-250**



- 176 A multi-gem triple cluster ring, bezel-set with an oval-cut sapphire, ruby and an emerald, within a border of small round-cut diamonds, in unmarked yellow metal testing as 18ct, size M½, 7.2 grams.
Please note: Unless otherwise stated, lots have been tested using an electronic tester. This is a surface test only and is not a guarantee of metal purity. **£800-1,200**



- 177 A Golden South Sea cultured pearl necklace; featuring thirty-one round pearls ranging in size from 11.0mm to 15.0mm, of pale golden colour with silver/pink lustre, strung to a lozenge-shaped clasp of white metal, necklace length approximately 42.0cm, weight 99.1 grams. **£500-700**



- 178 An unheated colour-change Ceylon sapphire solitaire ring, featuring an oval-cut sapphire of medium purplish-blue colour, measuring 12.2mm x 8.4mm x 8.0mm, with an estimated carat weight of 7.61ct, claw-set between triangular shoulders set with diamond accents with an estimated total weight of 0.12ct, to D-profile shank in unmarked yellow metal surface testing as 18ct, size T½, 6.6 grams.
Accompanied by a verbal report from the Gemmological Certification Services confirming the colour-change sapphire to be Sri Lankan in origin, with no indications of heating. (Ref: 5786-0602)
Please note: Unless otherwise stated, lots have been tested using an electronic tester. This is a surface test only and is not a guarantee of metal purity. **£4,000-6,000**



Fine Jewellery, Watches & Silver, 20th Nov, 2025 09:30

- 179 A pair of sapphire and diamond cluster drop earrings, each centred with a circular-cut sapphire of 5.5mm, encompassed by nine round brilliant-cut diamonds, suspending from an articulated surmount set with graduated diamonds, total estimated diamond weight 1.76ct for the pair, screw-back fittings, unmarked white metal mount testing as 18ct, fittings 14ct, 2.5 cm drop, 6.2 grams.

Please note: Unless otherwise stated, lots have been tested using an electronic tester. This is a surface test only and is not a guarantee of metal purity. **£400-600**



- 180 A three-row cultured Akoya pearl necklace with diamond cluster clasp, containing three strands of round cultured pearls of 5.5-6.0 mm, hand-knotted to a floral cluster box clasp, encrusted with round brilliant-cut diamonds, in white gold bearing rubbed Sheffield hallmarks, testing as 14ct, overall length 38.0 cm, 52.4 grams.

Please note: Unless otherwise stated, lots have been tested using an electronic tester. This is a surface test only and is not a guarantee of metal purity. **£300-500**



- 181 A pair of diamond-set earrings, of stylised floral design, composed of a central round brilliant cut diamond measuring approximately 3.2mm, with petal-style surrounds channel-set with round brilliant cut diamonds, in white metal marked '750', with post fittings and ear clips, the earrings measuring approximately 15mm long; 6.6 grams **£400-600**



- 182 A diamond solitaire ring, claw-set with an old-cut diamond measuring approximately 5.2mm x 5mm x 3.6mm, with an estimated carat weight of 0.50ct, to a bi-colour metal mount, the tapered shoulders leading to a yellow metal mount marked '18ct' and 'Plat', size R; 2.9 grams **£300-500**



- 183 A pair of diamond-set drop earrings, of abstract design, each collet-set with a 4.5 mm round brilliant-cut diamond and a 2.5 mm diamond to the surmount, with an estimated total weight of 0.77ct for the pair, 4.9 cm drop, yellow metal testing as 18ct, 7.67 grams.

Please note: Unless otherwise stated, lots have been tested using an electronic tester. This is a surface test only and is not a guarantee of metal purity. **£600-800**



Fine Jewellery, Watches & Silver, 20th Nov, 2025 09:30

- 184 A large synthetic spinel dress ring, with a round synthetic spinel in blue, claw set in a yellow metal mount with floral motif shoulders, to a tapered D-profile shank, marked as '14k', ring head measures 1.9 cm across, ring size M½, total weight of item 9.7 grams. **£250-350**



- 185 A pair of cultured pearl earrings, each mounted with a round cultured pearl of 7.9 mm, embellished with a diamond accent, to ear post and hinged back, in white metal stamped '750', 1.5 cm drop, 3.3 grams. **£200-300**



- 186 A double row cultured Akoya pearl bracelet, comprising two strands of hand-knotted round cultured pearls of 7.0 mm, with diamond-set bar spacers to a box clasp, decorated with a floral cluster composed of round pearls and round brilliant-cut diamonds, white metal stamped '750', 18.5 cm in length, 31.3 grams. **£300-500**



- 187 An opal dress ring, the oval precious opal cabochon measures 13.7 x 9.6 x 4.4 mm, displaying medium spectral play-of-colour on a light ground, set in a collet between floral shoulders, yellow metal marked '18ct', size L, 4.7 grams. **£300-500**



- 188 An Edwardian single stone diamond crossover ring, the transitional cut diamond in an eight claw setting to diamond set crossover shoulders and a plain shank marked '18ct' and 'plat'; a single stone tinted diamond ring, in a bi-coloured setting, marked '18ct', and a sapphire and diamond oval cluster ring. Gross weight 7.7 grams **£300-500**



Fine Jewellery, Watches & Silver, 20th Nov, 2025 09:30

- 189 A synthetic orange sapphire ring, with an emerald-cut synthetic sapphire in reddish-orange colour, double claw set on a yellow metal mount, floral details on gallery and shoulders, to a D-profile shank, marked '14k', ring size O, total weight of item 4.8 grams. **£250-350**



- 190 A pair of single stone diamond stud earrings, the round brilliant cut diamonds in 18ct yellow gold four-claw mounts, with post and butterfly fittings. The total diamond weight is estimated to be approximately 0.25 carats. Gross weight 0.9 grams. **£300-500**



- 191 A diamond-set half-hoop ring in 14ct white gold, with an estimated total diamond weight of 0.40ct, comprising three graduated round brilliant-cut diamonds, in claw settings to a tapering shank, Sheffield hallmarks, size R, 3.5 grams. **£200-300**



- 192 A pair of 'Marine knot' cufflinks, textured and terminated with nautical rope knot motifs, yellow metal marked '750', overall measures 2.5 cm wide, the total weight of items 14.0 grams. **£800-1,200**



- 193 A tapered fancy link bracelet in 9ct yellow gold, comprising a series of textured tubular links, edged with foxtail links, fastens with a concealed tongue clasp with push-in thumbpiece, Birmingham 1991, overall length 17.0 cm, 34.9 grams. **£600-800**



Fine Jewellery, Watches & Silver, 20th Nov, 2025 09:30

- 194 A sapphire and diamond crossover ring, consisting of two pear-shaped sapphires claw-set on white metal mounts, each encircled with diamond accents, to a tapered flat shank in yellow metal, marked as '750', ring size M½, total weight of item 4.6 grams. **£500-700**



- 195 A diamond solitaire pendant, composed of an old-cut diamond measuring approximately 6.2mm, with an estimated carat weight of 1.00ct, in a bezel-set mount with a surmount of contemporary design, to a foxtail link chain, marked '925'; 5.2 grams **£500-700**



- 196 A purple sapphire crossover ring, featuring a cushion-cut purple sapphire of 7.1mm x 6.1mm x 4.5mm, set between bypass shoulders leading to a tapering shank, unmarked white metal testing as platinum, size N½, 6.4 grams. Accompanied by a Stalwart gem report (no.: 112493) stating the stone of Mogok, Myanmar origin, with no indications of thermal treatment, dated July 2006. Please note: Unless otherwise stated, lots have been tested using an electronic tester. This is a surface test only and is not a guarantee of metal purity. **£800-1,200**



- 197 A diamond-set half eternity ring, with an estimated total diamond weight of 0.40ct, comprising five graduated round brilliant-cut diamonds, spaced with diamond-set intervals, to a white metal band marked '18ct', size S, 3.0 grams. **£250-350**



- 198 Two pairs of pearl-set cufflinks; to include a pair of round panel cufflinks, concave mother-of-pearl insets within a dotted enamel border, highlighted with a seed pearl to the centre, in yellow metal stamped '18ct'; together with another pair of square panel cufflinks, set with nine split pearls and decorated with black champléve enamel latticework, to a toggle bar with pearls set to the slanter terminals, unmarked yellow metal surface testing as 14ct; total weight of items 20.0 grams. (2) Please note: Unless otherwise stated, lots have been tested using an electronic tester. This is a surface test only and is not a guarantee of metal purity. **£200-300**



Fine Jewellery, Watches & Silver, 20th Nov, 2025 09:30

- 199 A cultured pearl solitaire ring, the cultured pearl measuring approximately 8.3mm, with diamond-set crossover-style shoulders, to a white metal mount, marks rubbed, surface tested as 18ct gold, size P1/2; 3.7 grams
Please note: Unless otherwise stated, lots have been tested using an electronic tester. This is a surface test only and is not a guarantee of metal purity. **£200-300**



- 200 A single-row cultured pearl necklace, comprising a row of 5.3 mm round cultured pearls, flanking 6.4 mm pearl spacers and metal roundelles, completed with a fluted ball clasp in yellow metal marked '9ct', overall length 42.0 cm, in a Christopher Milton Stevens case, 16.8 grams. **£80-120**



- 201 A diamond solitaire ring, comprising a central round brilliant-cut diamond in a six claw setting, with an estimated carat weight of 0.83ct, to tapering shoulders with circular drilled detail, to an 18ct white gold knife-edge band, size N, 4.9 grams. **£500-700**



- 202 A single-row cultured pearl necklace, comprising a series of uniform round cultured pearls of 8.0 mm, in cream colour with rose overtones, hand-knotted to a two-toned ball clasp of stripe design in sandblast finish, Birmingham import marks, 1989, 42.5 cm long, in a Christopher Milton Stevens case, 37.6 grams. **£200-300**



- 203 A sapphire and diamond halo ring, centred with a cushion-cut sapphire of dark blue colour, framed within a diamond-set surround, between tapered shoulders, white metal surface testing as 18ct, ring head 1.5 x 1.2 cm, size Q, 4.7 grams.
Please note: Unless otherwise stated, lots have been tested using an electronic tester. This is a surface test only and is not a guarantee of metal purity. **£400-600**



Fine Jewellery, Watches & Silver, 20th Nov, 2025 09:30

- 204 A pair of diamond and pearl drop earrings, the slightly ovoid silver white cultured pearls in diamond set cup mounts and suspended on an articulated row of round brilliant and marquise cut diamonds. Post fittings. unmarked, test as 18 carat white gold. Pearls 9.85 and 9.9mm. Overall drop 29mm. Gross weight 6.4 grams.
Please note: Unless otherwise stated, lots have been tested using an electronic tester. This is a surface test only and is not a guarantee of metal purity. **£600-800**



- 205 A sapphire and diamond cluster ring, the oval mixed cut sapphire claw mounted within a border of fourteen round brilliant cut diamonds and with two calibr  cut sapphires to each shoulder. Plain D-shaped shank, unmarked, tests as white gold. Sapphire is estimated to weigh 2.66 carats. 9.4 x 7.5 x 4.5mm, 3.46 grams. Together with a Gem and Pearl Laboratory sapphire certificate.
Please note: Unless otherwise stated, lots have been tested using an electronic tester. This is a surface test only and is not a guarantee of metal purity. **£2,000-3,000**



- 206 A diamond and sapphire riviere necklace in 18ct white gold, with an estimated total diamond weight 3.96ct, comprising alternating square-cut sapphires and round brilliant-cut diamonds, collet-set in conforming and articulated bevelled mounts, completed with a concealed tongue clasp and fold-over catch, signed Neil Joseph, British assay marks, overall length 43.5 cm, 64.3 grams. **£5,000-7,000**



- 207 A charm bracelet, comprising a heavy curb link chain fastened with a heart-shaped locket clasp, suspending seven charms, including examples of animals, a shoe, a telephone, a key and a chariot, South African assay marks for 18ct, maker's mark for E. Tiessen, 1974, overall length 18.0 cm, 160.0 grams. **£7,500-9,500**



- 208 Three watch chains; to include a French fancy link watch chain, comprising a series of braided fancy links, flanked with spherical spacers and double fox tail chains, terminated with a dog clip and a mixed metal spring ring clasp, French hallmarks for 18ct on the chain and dog clip, boar and eagle head mark to the spring ring clasp, 28.5 cm in length, 14.2 grams; together with two other plated watch chains. (3) **£600-800**



Fine Jewellery, Watches & Silver, 20th Nov, 2025 09:30

- 209 A dress ring set with cubic zirconia, the octagonal panel head pave-set with circular-set CZs, between studded shoulders to tapering shank, unmarked yellow metal surface testing as 18ct, size P, 7.6 grams.
Please note: Unless otherwise stated, lots have been tested using an electronic tester. This is a surface test only and is not a guarantee of metal purity. **£500-700**



- 210 A Byzantine chain necklace, with flattened links fastened by a lobster clasp, yellow metal stamped 'Italy 14K', overall length 52.0 cm, 13.9 grams. **£250-350**



- 211 A ruby and diamond dress ring, six rectangular table-cut rubies and three single-cut diamonds composing a cruciform, between bifurcated shoulders leading to an angular shank, yellow metal stamped '585', size L, 2.8 grams. **£300-500**



- 212 A pair of emerald and diamond stud earrings, of reniform shape, each set with five circular-cut emeralds and six round brilliant-cut diamonds, ear post and butterfly fittings, yellow metal marked '18K', 1.5 cm wide, 3.7 grams. **£200-300**



- 213 A three-strand bead necklace and an emerald bead necklace; The three-strand necklace comprises a row of keshi pearls, a row of emerald beads and a row of opaque ruby beads, attached to a gem-set box clasp with safety catch, measuring 43.5 cm long; The emerald bead necklace has graduated beads from 2.2 to 6.4 mm, with drawstring fastening, drop length measuring 39.0 cm. Total weight of items 61.9 grams (2). **£200-300**



Fine Jewellery, Watches & Silver, 20th Nov, 2025 09:30

- 214 A single-row cultured pearl necklace, comprising a series of uniform round cultured pearls of approximately 7.4mm, in cream colour with rose overtones, the strand hand knotted and measuring approximately 95cm, 60.5 grams. **£200-300**



- 215 A gem-set heart pendant, centred with an oval sapphire cabochon in collet, in a stepped heart mount with mother-of-pearl insets, and round brilliant-cut diamonds, on a diamond-set tapering bail, estimated total diamond weight 1.10ct, yellow metal bearing French eagle head assay marks for 18ct, overall dimensions 3.8 x 3.3 cm, 11.9 grams. **£600-800**



- 216 A cultured golden South Sea pearl and diamond ring, with matching earrings; the ring centred with a round golden South Sea pearl of approximately 15.4mm, of pale golden colour, to an undulating halo of round-cut and square-cut diamonds, size K; together with a pair of matching stud earrings, each featuring a round pearl of 14.5mm and 15.5mm, of golden colour, with diamond set halos, to post and butterfly fitting, all in unmarked white metal, total weight 34.8 grams. **£300-500**



- 217 A cultured golden South Sea pearl pendant, centred with a round golden South Sea pearl of approximately 16.2mm, of pale golden colour, to an undulating halo of round cut and square cut diamonds, with a tapered bale, drop 3.2cm, in unmarked white metal, weight 12.3 grams. **£200-300**



- 218 A two-toned hinged bracelet, composed of two hollow curved halves connected by a lobster clasp, stamped '750', inner diameter 6.2 cm, 11.2 grams. **£500-700**



Fine Jewellery, Watches & Silver, 20th Nov, 2025 09:30

- 219 A bi-coloured 'Jubilee'-style ring, stamped '585' and testing as 14 carat gold. Size N, 1.8 grams.
Please note: Unless otherwise stated, lots have been tested using an electronic tester. This is a surface test only and is not a guarantee of metal purity. **£200-300**



- 220 A South Sea cultured pearl dress ring, featuring a large, cream coloured cultured pearl of 13.2 mm, mounted between diamond-set shoulders, with an estimated total weight of 0.50ct, to a flat shank in unmarked white metal testing as 9ct, size J½, 10.0 grams.
Please note: Unless otherwise stated, lots have been tested using an electronic tester. This is a surface test only and is not a guarantee of metal purity. **£200-300**



- 221 A pair of pearl and diamond clip-on earrings, of stylised foliate design, each comprises a round pearl of 7.2 mm, to a foliate mount set with round brilliant-cut diamonds, estimated total weight 0.77ct for the pair, fitted with omega clips to the back, white metal bearing Austrian elephant head assay mark for 18ct (1922-2001), maker's mark 'CR' on oval cartouche, 2.3 cm drop length, 6.9 grams. **£600-800**



- 222 A pair of diamond pendant earrings, comprising an abstract cluster set with tiers of round brilliant and baguette-cut diamonds, and suspending a detachable cluster drop set throughout with round brilliant and baguette-cut diamonds. To post and hinge fittings. Stamped '750'. Overall length 4.7cm. Gross weight 18.3 grams. **£2,000-3,000**



- 223 A single stone diamond ring, the princess cut diamond claw mounted in platinum above channel set diamond shoulders, accompanied by a GIA report stating that the diamond is E, VS1 and 0.41 carats; together with a platinum and diamond set crossover wedding band en suite. Size L1/2, Gross weight 8.1 grams
Complete with boxes and paperwork. **£500-700**



Fine Jewellery, Watches & Silver, 20th Nov, 2025 09:30

- 224 Mappin & Webb - a pair of diamond-set hoop earrings in 18ct white gold, pavé-set with two single rows of round brilliant-cut diamonds, with an estimated total weight of 0.32ct for the pair, ear post and butterfly fittings, British hallmarks, 2.0cm drop, 4.2 grams.
Boxed, no papers. **£300-500**



- 225 A pair of drop earrings set with aquamarine and topaz, the wire pendant drop claw-set with a pear-cut aquamarine, suspending from a surmount collet-set with a circular-cut topaz, hook fittings, white metal marked '750' and surface testing as 18ct, 6.0 cm drop, in a Mappin & Webb case, 6.1 grams.
Please note: Unless otherwise stated, lots have been tested using an electronic tester. This is a surface test only and is not a guarantee of metal purity. **£600-800**



- 226 Mappin & Webb - a pair of diamond-set hoop earrings in 18ct white gold, pavé-set with two single rows of round brilliant-cut diamonds, with an estimated total weight of 0.90ct for the pair, ear post and butterfly fittings, British hallmarks, 3.0 cm drop, 7.4 grams.
Boxed, with papers. **£500-700**



- 227 Dior - a diamond-set double cross pendant on chain, the cross pendant on a cross surmount, fully encrusted with 0.35ct, 2.5 cm drop, on a 39.0 cm fine Figaro link chain with spring-ring clasp, signed and numbered, white metal bearing the French eagle head assay mark, 3.2 grams.
No box no papers. **£400-600**



- 228 Dior - 'Bite' choker necklace from the Vampire Bride collection, claw-set with two pear-cut red spinels resembling dripping blood from the neck, on a fine Figaro link chain completed with spring-ring clasp, signed and numbered, white metal bearing French eagle head assay marks, length adjustable from 30.5cm, 33.0cm and 35.5cm, 3.0 grams.
No Box. No papers. **£400-600**



Fine Jewellery, Watches & Silver, 20th Nov, 2025 09:30

- 229 Dior - a 'Deux Epices' multi-gem dress ring, composed of two bands flanking an oval-cut tourmaline, peridot and aquamarine in collets, with diamond accents and further decorated with articulated teardrop fringe to the border, signed and numbered, white metal bearing the French eagle head assay mark for 18ct, size L½, 13.6 grams.
No box no papers. **£1,500-2,000**



- 230 Dior - a 'Gourmande Libellule (Greedy Dragonfly)' cocktail ring, set with a large blue chalcedony cabochon, to a mount of foliate design with a diamond-set perching dragonfly, signed and numbered, French eagle head assay marks for 18ct, ring head 2.8 x 2.3 cm, size P, 29.6 grams. **£1,500-2,000**



- 231 Cartier - a 'Love' pendant on chain, set with three brilliant-cut diamond accents, the annulet pendant engraved with screw motifs, signed and numbered, pink metal marked 'Au750', 2.5 cm wide, on a 42.0 cm fine trace link chain, 12.7 grams.
With travel pouch, no papers.
RRP £4,800 **£2,000-3,000**



- 232 Cartier - a Lanière diamond line bracelet, composed of round brilliant cut diamonds in squared articulated links to a push button concealed clasp. Signed Cartier, numbered and with French control marks. Diamond content estimated to be approximately 3 carats. 18cm length, 16.1 grams.
In a fitted Cartier case and with an outer box, no papers.
£5,000-7,000



- 233 Tiffany & Co. - a 'Tiffany Soleste' double row ring, claw-set with one cushion modified brilliant-cut diamond weighing 0.45ct, surrounded by and set on the shank with bead-set round brilliant-cut diamonds weighing approximately 0.32ct total, in white metal marked 'PT950', signed and numbered, size K½, 5.3 grams.
Accompanied by a Tiffany diamond certificate, stating the principal diamond has a colour grade of F, and clarity grade VVS2.
With box and papers. **£2,000-3,000**



Fine Jewellery, Watches & Silver, 20th Nov, 2025 09:30

- 234 Tiffany & Co. - a diamond ribbon solitaire ring with a pair of custom-made platinum ring guards; the solitaire ring centred with a round brilliant-cut diamond of 1.01ct, in a diamond-set bar setting, between tapered shoulders to a flat shank, in white metal marked 'PT950', size L½; the custom-made fitted ring guards together set with three rows of pavé-set diamonds in platinum, British assay marks; total weight of items 18.5 grams. (2)

Accompanied by a Tiffany & Co. diamond certificate, stating the colour and clarity to be H and VVS2, with no fluorescence.

£3,000-5,000



- 235 Tiffany & Co. - a pair of single stone diamond earrings, the round brilliant cut diamonds in platinum four claw mounts, with screw post fittings, signed and numbered, British assay marks, 3.3 grams.

Accompanied by Tiffany certificates stating the stones to be 1.00 carat and 1.01 carat. H/VVS1 and H/VVS2. **£3,000-5,000**



- 236 Tiffany & Co. - a pair of small single stone diamond earrings, the round brilliant cut diamonds in platinum four prong settings with screw post fittings, diamonds are estimated to weigh approximately 0.22 carats and 0.21 carats, 1.3 grams. No box no papers. **£200-300**



- 237 Boodles - a diamond-set 'Blossom Triple' ring in 18ct yellow gold, comprising three stylised sakura blossom motifs, encrusted with round brilliant-cut diamonds with an estimated total weight of 0.38ct, to a tapering flat shank, London 2017, sponsor's mark B&D, ring head 2.0 cm wide, size N, 6.4 grams.

With box, travel pouch and papers.

RRP £3,100 **£800-1,200**



- 238 Boodles - a pair of diamond-set 'Blossom Signature' drop earrings, each comprising a stylised sakura blossom motif, encrusted with round brilliant-cut diamonds, suspending from a half hoop surmount fitted with peg and butterfly, signed and numbered, yellow metal surface testing as 18ct, 2.4 cm drop, 5.8 grams.

With box, no papers.

Please note: Unless otherwise stated, lots have been tested using an electronic tester. This is a surface test only and is not a guarantee of metal purity. **£700-900**



Fine Jewellery, Watches & Silver, 20th Nov, 2025 09:30

- 239 Boodles - a diamond-set 'Blossom' charm bracelet in 18ct white gold, comprising six sakura blossom motifs, with three of them embellished with diamond accents, connected by segments of cable links, completed with a lobster clasp, signed, London 2018, overall length 19.0 cm, 12.0 grams. With box, no papers. **£1,500-2,000**



- 240 Boodles - an 18ct white gold diamond-set 'Blossom' pendant on chain, the polished stylised sakura blossom motif suspended on a diamond-set bail, 2.8 cm drop length, on a cable link chain with diamond-set lobster clasp, length adjustable from 52.0, 55.0 and 58.0 cm, signed, London 2017, 12.3 grams. With box and papers. **£1,000-1,500**



- 241 Damiani - a diamond necklace from the Gemilli collection, composed of graduated, articulated scrolling links, pavé set with round brilliant cut diamonds, with diamond set spacers and concealed push-button clasp with a safety clasp. With applied maker's plaque and Italian '750' mark. Outer length 44cm. Total diamond weight estimated to be between 9 and 10 carats. Gross weight 68.7grams. **£6,000-8,000**



- 242 David Morris - a diamond-set flexible torque bangle, of quatrefoil design, comprising a series of graduated floral links, central segment encrusted with round brilliant-cut diamonds, with an estimated total weight of 1.65ct, white metal signed and stamped '18ct', inner diameter 5.6 cm, 42.6 grams. **£3,000-5,000**



- 243 A pearl and diamond necklace in 18ct white gold, of undulating design, featuring a large teardrop-shaped cultured pearl of 16.3 x 13.4 mm, with a diamond-set cap of foliate design, articulated centrepiece attached to segments of bar links and diamond spacers, completed with a modified box clasp signed 'Chaumet Paris', London import marks 1983, sponsor's mark 'AILd', overall length 42.0 cm, 36.8 grams. **£8,000-12,000**



Fine Jewellery, Watches & Silver, 20th Nov, 2025 09:30

- 244 A princess-cut diamond solitaire ring, featuring a 5.27ct princess-cut diamond in a trefoil claw setting, leading to a tapering flat shank in white metal testing as platinum, size L, 6.9 grams.
With a copy of the insurance valuation confirming the diamond has been GIA certificated, stating colour and clarity G, VS2.
Please note: Unless otherwise stated, lots have been tested using an electronic tester. This is a surface test only and is not a guarantee of metal purity. **£30,000-50,000**



- 245 An impressive diamond-set line bracelet, with a total carat weight of 17.15ct, the well-matched thirty-five round brilliant-cut diamonds, each with carat weights ranging from 0.43ct to 0.51ct, in four prong settings to a platinum mount, with push bar clasp and safety catch, measuring approximately 18.5cm, hallmarked London, 2007; 31.4 grams Each diamond is accompanied by a GIA laboratory dossier stating the colour as D/E and clarity as VS2/SI1 **£15,000-20,000**



- 246 A transitional-cut diamond solitaire ring, the diamond with an estimated weight of 8.96ct, in claw setting to tapering flat shank, unmarked white metal testing as platinum, size O, 6.9 grams.
Please note: Unless otherwise stated, lots have been tested using an electronic tester. This is a surface test only and is not a guarantee of metal purity.
Please note: This stone has been graded in its mount, and the grading is intended as an opinion only. Results are subject to change following the stone being unset. **£25,000-30,000**



- 247 Chanel - a double-row faux pearl and gripoix glass floral necklace, circa 1970s, the flowerhead pendant set with light blue gripoix glass as petals, highlighted with rhinestones and further suspending a capped pearl drop below, on double strands of hand-knotted faux baroque pearls, with a hook clasp, signed on a round plaque, 51.5 cm long.
Boxed, no papers. **£600-800**



- 248 Chanel - a magnifying glass pendant on chain, circa 1984, the circular magnifying glass in a textured mount decorated with half faux pearls, suspending on a curb link chain terminated with a dog clip and a spring-ring clasp, signed on oval plaque, collection '23', pendant 7.0 cm drop, chain measures 90.0 cm long.
No box no papers. **£400-600**



Fine Jewellery, Watches & Silver, 20th Nov, 2025 09:30

- 249 Chanel - a 'Leo Lion Sun' choker, circa 1980s, the sunburst lion head centrepiece is attached to two rows of heavy curb links, completed with a hook clasp, signed on an oval plaque, 41.5 cm long.
No box no papers. **£300-500**



- 250 Chanel - a multi-row faux pearl necklace, 1983 collection, comprising seven rows of off-round faux pearls, hand-knotted to a jewelled clasp set with polychromatic gripoix glass cabochons, gold-tone hardware, signed on oval plaque marked '1983', 39.5 cm long.
Boxed, no papers. **£500-700**



- 251 Chanel - a medallion choker, circa 1990, of shield form with heraldic design, fastens with a spring-ring clasp, signed on an oval plaque, adjustable length from 38.5 - 44.5 cm.
No box no papers. **£400-600**



- 252 Chanel - a faux pearl necklace with sunburst clasp, circa 1980s, comprising a single row of 14.0 mm round faux pearls, chained to a sunburst design clasp centred with a large faux pearl, suspending an interlocking CC logo motif, signed on oval plaque, 42.0 cm long.
No box no papers. **£300-500**



- 253 Chanel - a pair of faux pearl earrings of pinecone form, 1996 collection, each centred with a round faux pearl with applied interlocking CC logo, clip-on fittings to the back, signed on oval plaque, marked 96 P, 2.5 cm wide.
No box no papers. **£200-300**



Fine Jewellery, Watches & Silver, 20th Nov, 2025 09:30

- 254 A single enamel and engraved mother-of-pearl dress stud, marked '18' in a fitted Cartier case, 1.3 grams; together with a quantity of branded empty jewellery cases, including Garrard, Antrobus, Cartier, Harrods, Georg Jensen, Asprey, Dunhill and Blisain, Paris. **£200-300**



- 255 Walter Schluep - a 'You Know' pendant, in the form of a round plaque, abstract design set with transparent red and opaque black resin, on a loop bail, signed '1971 Schluep Montréal' to the reverse, 5.2 cm drop, 18.5 grams.

Walter Schluep was born in Switzerland in 1931 and moved to Montreal, Canada in the early 1950's. Having trained as a Jeweller & Diamond-Setter in Switzerland, Schluep created his own modernist and contemporary jewellery designs that are viewed not only as jewellery but as examples of wearable sculpture. His work has won many awards, including being exhibited in the Canadian Pavilion at the 1967 International and Universal Exposition. The Montreal Museum of Fine Arts currently holds a collection of Schluep's work. £200-300



- 256 Walter Schluep - a 'Jesus Saves' brooch, circa 1970, the bi-colour metal brooch with epoxy design of a bleeding American flag, measuring approximately 5.5cm x 4.5cm, with brooch pin fitting to the reverse, marked 'Schleup Sterling' to the reverse; 28.0 grams

Walter Schluep was born in Switzerland in 1931 and moved to Montreal, Canada in the early 1950's. Having trained as a Jeweller & Diamond-Setter in Switzerland, Schluep created his own modernist and contemporary jewellery designs that are viewed not only as jewellery but as examples of wearable sculpture. His work has won many awards, including being exhibited in the Canadian Pavilion at the 1967 International and Universal Exposition. The Montreal Museum of Fine Arts currently holds a collection of Schluep's work.



This piece echoes Schluep's position towards the significant events of the 1970's as the United States engaged in war with Vietnam. 1

1 Côté, V. (April 2011). Between Art and Craft: The Process of Artistic Legitimation of Art World Actors in Quebec in the 1960s-1970s. [Online] p17. Available from: https://spectrum.library.concordia.ca/id/eprint/7308/1/Cote_MA_S2011.pdf £400-600

Fine Jewellery, Watches & Silver, 20th Nov, 2025 09:30

- 257 A silver bib necklace, comprising a woven five rows of articulated circular links, completed with a concealed tongue clasp, Birmingham assay marks, overall length 43.0 cm, 212.4 grams. **£100-200**



- 258 Georg Jensen - An 'Infinity' bangle designed by Regitze Overgaard, comprising three interlocking Möbius strip links, no. 452, with silver convention marks, inner circumference approximately 18.0cm, 77.0 grams. **£300-500**



- 259 Georg Jensen - A bird brooch designed by Arno Malinowski, no 309, depicting a wren with a fern wreath, with hinged pin fitting and roll-over safety catch, with post-1945 maker's mark, 4.2cm x 4.5cm, 11.4 grams. **£100-200**



- 260 Georg Jensen - A duck brooch designed by Hugo Liisberg, no. 299, comprising an openwork brooch depicting two ducks, with hinged pin fitting and roll-over safety catch, with post 1945 maker's mark, diameter 5.4cm, 19.7 grams. **£100-200**



- 261 Georg Jensen - A mermaid brooch designed by Arno Malinowski, no. 277, depicting a mermaid riding a hippocampus, embossed within a stylised frame, with hinged pin fitting and roll-over safety catch, with 1933-44 maker's mark, 6.0cm x 6.0cm, 18.4 grams. **£150-250**



Fine Jewellery, Watches & Silver, 20th Nov, 2025 09:30

- 262 Georg Jensen, A 'Dove' plaque link bracelet, motifs designed by Kristian Mohl Hansen, comprising a series of six links detailed with alternating repoussé dove and foliate motifs, completed with an integral box clasp and additional safety catch, no. 14, with London import marks for silver, 2.3cm wide, 18.5cm in length, boxed, 56.0 grams. **£300-500**



- 263 Georg Jensen - A heart-shaped bird brooch designed by Arno Malinowski, no. 239, depicting a flying dove with olive branches, fitted with a hinged pin fitting and roll-over safety catch, with 1933-44 makers mark, 4.1cm x 3.9cm, 13.5 grams. **£100-200**



- 264 Georg Jensen - A deer brooch designed by Arno Malinowski, no. 318, the brooch of square openwork design depicting a resting deer and squirrel in foliage, with hinged pin fitting and roll-over safety catch, with post-1945 maker's mark, London import marks for silver, 4.0cm x 4.0cm, 22.5 grams. **£100-200**



- 265 Georg Jensen - Three Brooches: The first a fish brooch, no.10, depicting a fish coiled in waves, with hinged pin fitting and roll-over safety catch, with post-1945 maker's mark and London silver hallmark, 3.1cm x 3.1cm, 6.7 grams; The second a dove brooch, no. 134, depicting a dove within a wreath, with hinged pin fitting and roll-over safety catch, dove motif designed by Kristian Mohl-Hansen, post-1945 maker's mark, 3.0cm x 3.0cm, 6.3 grams; The third a dove brooch designed by Arlo Malinowski, no. 204, depicting a dove amongst foliage, with hinged pin fitting and roll-over safety catch, post-1945 maker's mark, 3.0cm x 4.0cm, 11.7 grams. (3). **£200-300**



- 266 Georg Jensen - 'Neck Ring' designed by Vivianna Torun Bülow-Hübe, comprising a torque neck ring completed with a tension clasp (no. l411), with two interchangeable oval pendants, one rock crystal (no. 311C) and one smoky quartz (no. 311B), each to a bar suspension stamped with silver convention marks, the three components stamped 'TORUN', pendant drop lengths approximately 7.0cm, boxed, total weight 100 grams. **£600-800**



Fine Jewellery, Watches & Silver, 20th Nov, 2025 09:30

- 267 Georg Jensen - A pair of pod drop earrings, hollow ovals suspending from a bar, screw-back fittings, designed by Vivianna Torun Bülow-Hübe, stamped '925', 4.8 cm drop, 5.1 grams.
With box. No papers. **£250-350**



- 268 Georg Jensen - A 'Cave' bracelet, designed by Jacqueline Rabun, comprising a row of sixteen graduated hollow spheres, one detailed with a filled oxidised concave accent, completed with an integral box clasp and additional safety catch, no. 441, signed and British hallmarked, overall length 21.0cm, 82.0 grams. **£200-300**



- 269 Georg Jensen - A hematite ring designed by Harald Nielsen, comprising an oval hematite cabochon measuring 7.8mm x 2.8mm, to a stepped bezel setting, leading to a tapering ring shank, no 46A, back of setting marked '925', size O, 14.0 grams. **£100-150**



- 270 Georg Jensen - A silver link bracelet of modular design, completed with a concealed tongue clasp with safety catch, designed by Edvard Kindt-Larsen, No. 103, signed and bearing London import marks 1993, overall length 18.8 cm, 68.2 grams.
With box. No papers. **£400-600**



- 271 Georg Jensen - A pair of swirl earrings, composed of concave round swirls, clip-on fittings, designed by Vivianna Torun Bülow-Hübe, No. 371B, stamped '925', signed Torun, 3.3 cm drop, 16.0 grams.
With box. No papers. **£100-200**



Fine Jewellery, Watches & Silver, 20th Nov, 2025 09:30

- 272 Georg Jensen - An 'Infinity' bangle designed by Hans Hansen, comprising one intertwining Mobius loop band, with silver convention marks, inner circumference approximately 18.0cm, 78.5 grams. **£200-300**



- 273 Georg Jensen - A pair of geometric clip-on earrings, of abstract concave lozenge form, clip-on fittings to the back, designed by Nanna Ditzel, No. 131, post-1945 maker's mark, stamped '925S', 3.0 cm drop, 16.7 grams. with box no papers. **£100-200**



- 274 Georg Jensen - 'Arm Ring' designed by Vivianna Torun Bülow-Hübe, comprising a tension clamp opening bangle with a rounded square panel of smoky quartz set in a conforming mount, to a tapered concave band, model 203, both components marked 'TORUN', inner circumference approximately 15.5cm, bangle width 22mm, smoky quartz measuring 35mm x 35mm x 15mm, boxed, total weight 79.5 grams. **£300-500**



- 275 Georg Jensen - A neckring, of sinuous form, with an integral tension clasp, design no. A3B, post-1945 maker's mark, stamped '925S DENMARK', inner diameter 12.0 cm, cased, 34.0 grams. **£300-500**



- 276 Georg Jensen - A silver 'Möbius' closed bangle, designed by Torun Bülow-Hübe, design no. 206, with post-1945 maker's mark and Danish silver convention marks, inner diameter 6.7 cm, 50.2 grams. **£200-300**



Fine Jewellery, Watches & Silver, 20th Nov, 2025 09:30

- 277 Georg Jensen - A heart pendant on a hematite bead necklace, designed by Allan Scharff, comprising a stylised heart pendant threaded onto a necklace of hematite beads, each measuring 7.3mm in diameter, completed with a lobster clasp, the heart pendant stamped '925', model 247B, necklace measuring 45.0cm in length, boxed, 95.0 grams. **£250-350**



- 278 Georg Jensen - A silver torque bangle, by Hans Hansen, the polished bracelet with stylised bypass terminals, bearing the post-1945 maker's mark, designer signature, and London import marks for 1995, inner diameter 6.4 cm, 63.0 grams. **£200-300**



- 279 Georg Jensen - An openwork butterfly brooch designed by Arlo Malinowski, no. 283, depicting two butterflies resting upon bellflowers, with hinged pin fitting and roll-over safety catch, with post 1945 maker's mark, 5.3cm x 5.3cm, 23.1 grams. **£150-250**



- 280 Georg Jensen - A lamb brooch designed by Arlo Malinowski, no. 311, depicting a lamb and frond of ivy foliage, with hinged pin fitting and roll-over safety catch, with post 1945 maker's mark, 5.0cm x 4.6cm, 17.5 grams. **£100-200**



- 281 Georg Jensen - A lamb brooch designed by Arno Malinowski, no. 284, depicting a lamb flanked by two enamel ivy leaves, with hinged pin fitting and roll-over safety catch, with 1933-44 maker's mark, 3.5cm x 3.3cm, 9.5 grams. **£100-200**



Fine Jewellery, Watches & Silver, 20th Nov, 2025 09:30

- 282 Georg Jensen - A pair of 'Moonlight Blossom' drop earrings with chalcedony, of stylized flower form, detailed with an oval chalcedony drop, suspended from a surmount of foliate design, to post fittings with butterfly backs, no. 2, earring drop length 4.3cm, 8.5 grams. **£100-150**



- 283 Georg Jensen - Two brooches; The first a 'Moonlight Grapes' brooch designed by Harald Nielsen, no.217A, repoussé and chased in a botryoidal cluster imitating a bunch of grapes, suspending from vine leaves surmount, with hinged pin fitting and roll-over safety catch, with post-1945 maker's mark, 4.3cm in length, 6.8 grams; The second a pierced butterfly brooch designed by Arno Malinowski, no. 294, depicting a butterfly on a pierced flowering stem, with hinged pin fitting (broken) and roll-over safety catch, with post-1945 maker's mark, 3.8cm x 3.8cm, 17.1 grams. (2). **£200-300**



- 284 Georg Jensen - A cockerel brooch designed by Arno Malinowski, no. 276, depicting a cockerel with fern accent in a square frame, with hinged pin fitting and roll-over safety catch, with post-1945 maker's mark, 3.8cm x 3.8cm, 12.3 grams. **£100-200**



- 285 Georg Jensen - A 'Moonlight Blossom' brooch, designed as a wreath of flowers, incorporating scrolling tendril and blossoms pattern, with a hinged pin stem and safety catch fittings, design No. 159, signed and stamped as 925, measuring 4.5 cm wide, 17.2 grams. **£100-200**



- 286 Georg Jensen - An openwork butterfly pendant designed by Arlo Malinowski, no. 105, depicting two butterflies resting upon bellflowers, suspended from a cable-link chain completed with a toggle clasp, pendant marked with post 1945 maker's mark, pendant measuring 5.3cm x 5.3cm, necklace measuring 64.0cm in length, 26.1 grams. **£150-250**



Fine Jewellery, Watches & Silver, 20th Nov, 2025 09:30

287

Omega

Seamaster

Reference: 396.09850

Serial: 47624783 (To Movement)

Bezel: Crystal-Covered, Rivet Detail

Case Material: Stainless Steel

Case Diameter: Approximately 33mm

Dial: White

Numerals: Baton, Minute Track with Roman Numeral Detail

Crown: Signed, Faceted

Movement: Omega Calibre 1420 Six-Jewel Movement, marked 'M701 0417' and numbered '47624783'

Complication: Date Aperture at three o'clock

Strap: Integral Bar-Link Strap

Inner Circumference: Approximately 17cm

Buckle: Signed Fold-Over Clasp

Box: Yes

Papers: No

Gross Weight: Approximately 63.5 grams

No long-term tests have been performed and accuracy cannot be guaranteed. A full service is advised on all watches and pocket watches once purchased.

We are unable to confirm mechanical replacements or imperfections to the movement, case, dial, pendulum, separate base(s) or dome.

Watches with water-resistant cases may have been opened to examine movements; no warranties are given regarding their water resistance.

It is also important to note that we cannot guarantee the authenticity or originality of individual components, such as wheels, hands, crowns, crystals, screws, bracelets, and wrist bands, since subsequent repairs and restoration may have changed the original components. Also, we cannot guarantee the authenticity or originality of any engraving or re-engraving on watch cases, case backs, bracelets, straps or internal movements. **£300-500**



Fine Jewellery, Watches & Silver, 20th Nov, 2025 09:30

288

Tudor

Oyster Royal

Reference: 7934

Serial: 269489

Bezel: Smooth

Case Material: Stainless Steel

Case Diameter: Approximately 34mm

Dial: Cream, Dauphine Hands

Numerals: Pointed Baton, Arabic at twelve, three, six and nine o'clock, Minute Track

Crown: Rolex Twinlock

Movement: Tudor 17-Jewel Manual Wind Movement

Strap: Rolex Expandable Britannic-Link Oyster Strap, marked 'R.D.874089'

Inner Circumference: Approximately 17.0cm (Not Expanded)

Buckle: Rolex Stainless Steel Fold-Over Clasp

Box: No

Papers: No

Gross Weight: 59.8 grams

No long-term tests have been performed and accuracy cannot be guaranteed. A full service is advised on all watches and pocket watches once purchased.

We are unable to confirm mechanical replacements or imperfections to the movement, case, dial, pendulum, separate base(s) or dome.

Watches with water-resistant cases may have been opened to examine movements; no warranties are given regarding their water resistance.

It is also important to note that we cannot guarantee the authenticity or originality of individual components, such as wheels, hands, crowns, crystals, screws, bracelets, and wrist bands, since subsequent repairs and restoration may have changed the original components. Also, we cannot guarantee the authenticity or originality of any engraving or re-engraving on watch cases, case backs, bracelets, straps or internal movements. **£400-600**



Fine Jewellery, Watches & Silver, 20th Nov, 2025 09:30

289

Dunhill

Millenium Wristwatch

Reference: 8000

Serial: CC 17334

Bezel: Smooth

Case Material: Polished Stainless Steel

Case Diameter: Approximately 26mm

Dial: Blue Enamel, Pointed Baton Hands

Numerals: Silvered Roman Numerals, Minute Track

Crown: Fluted

Movement: ETA Calibre 956.112 Seven-Jewel Quartz
Movement

Complication: Date Aperture at six o'clock

Strap: Stainless Steel Wave-Link Strap

Inner Circumference: Approximately 16cm

Buckle: Signed, Stainless Steel Double Fold-Over Clasp

Box: No

Papers: No. Dunhill Information Booklet Only.

Gross Weight: Approximately 61.0 grams

No long-term tests have been performed and accuracy cannot be guaranteed. A full service is advised on all watches and pocket watches once purchased.

We are unable to confirm mechanical replacements or imperfections to the movement, case, dial, pendulum, separate base(s) or dome.

Watches with water-resistant cases may have been opened to examine movements; no warranties are given regarding their water resistance.

It is also important to note that we cannot guarantee the authenticity or originality of individual components, such as wheels, hands, crowns, crystals, screws, bracelets, and wrist bands, since subsequent repairs and restoration may have changed the original components. Also, we cannot guarantee the authenticity or originality of any engraving or re-engraving on watch cases, case backs, bracelets, straps or internal movements. **£300-500**



Fine Jewellery, Watches & Silver, 20th Nov, 2025 09:30

290

Rovina

Stainless Steel Wristwatch

Reference: 51110G1B

Bezel: Smooth

Case Material: Stainless Steel

Case Diameter: Approximately 40mm

Dial: Grey, Basket-Weave Texture, Luminous Pointed Hands

Numerals: Arabic

Crown: Fluted

Movement: TT 73350B Quartz Movement

Complication: Date Aperture at three o'clock, Seconds

Subsidiary Dial at six o'clock, Additional Aperture at Twelve o'clock

Strap: Oyster-Style Stainless Steel Strap

Inner Circumference: Approximately 20cm

Buckle: Stainless Steel Push-Button Double Fold-Over Clasp

Box: Yes

Papers: No

Gross Weight: Approximately 187.0 grams

No long-term tests have been performed and accuracy cannot be guaranteed. A full service is advised on all watches and pocket watches once purchased.

We are unable to confirm mechanical replacements or imperfections to the movement, case, dial, pendulum, separate base(s) or dome.

Watches with water-resistant cases may have been opened to examine movements; no warranties are given regarding their water resistance.

It is also important to note that we cannot guarantee the authenticity or originality of individual components, such as wheels, hands, crowns, crystals, screws, bracelets, and wrist bands, since subsequent repairs and restoration may have changed the original components. Also, we cannot guarantee the authenticity or originality of any engraving or re-engraving on watch cases, case backs, bracelets, straps or internal movements. **£150-250**



Fine Jewellery, Watches & Silver, 20th Nov, 2025 09:30

291

Christian Dior

A Diamond-set Riva Chronograph

Reference: CD074312

Serial: EP6991

Year: circa 2005

Bezel: Diamond-set

Case Material: Stainless Steel

Case Diameter: Approximately 30mm x 32mm

Dial: Mother of Pearl

Numerals: Baton, Arabic at Twelve, Three and Nine o'clock

Crown: Signed, Fluted, Two Chronograph Pushers

Movement: Quartz

Complication: Ten-Hour Subsidiary Dial at Two o'clock,
Seconds Subsidiary Dial at six o'clock, 30-Minute Subsidiary
Dial at Ten o'clock, Date Aperture at six o'clock

Strap: Stainless Steel

Inner Circumference: Approximately 16cm

Buckle: Signed, Stainless Steel Push-Button Double Fold-Over
Clasp

Box: Yes

Papers: Guarantee Card (Unsigned), Gemstone Certificate
Booklet (Serial Number does not match), Chronograph
Booklet, Dior Watches Booklet & World Service Centre Booklet
Only.

Gross Weight: Approximately 134.5 grams

Please note this watch has not been opened. The movement
has not been checked and therefore cannot be guaranteed.
No long-term tests have been performed and accuracy cannot
be guaranteed. A full service is advised on all watches and
pocket watches once purchased.

We are unable to confirm mechanical replacements or
imperfections to the movement, case, dial, pendulum, separate
base(s) or dome.

Watches with water-resistant cases may have been opened to
examine movements; no warranties are given regarding their
water resistance.

It is also important to note that we cannot guarantee the
authenticity or originality of individual components, such as
wheels, hands, crowns, crystals, screws, bracelets, and wrist
bands, since subsequent repairs and restoration may have
changed the original components. Also, we cannot guarantee
the authenticity or originality of any engraving or re-engraving
on watch cases, case backs, bracelets, straps or internal
movements. **£200-300**



Fine Jewellery, Watches & Silver, 20th Nov, 2025 09:30

292

Christian Dior

A Diamond-set Riva Chronograph

Reference: D81-101

Serial: DZ5860

Year: circa 2005

Bezel: Smooth, Diamond-set

Case Material: Stainless Steel

Case Diameter: Approximately 30mm x 32mm

Dial: Silvered, Luminous Pointed Baton Hands

Numerals: Baton, Arabic at Twelve, Three and Nine o'clock

Crown: Signed, Fluted, Two Chronograph Pushers

Movement: ETA Calibre 251.471 23-Jewel Quartz Movement

Complication: Ten-Hour Subsidiary Dial at Two o'clock,
Seconds Subsidiary Dial at six o'clock, 30-Minute Subsidiary
Dial at Ten o'clock, Date Aperture at six o'clock

Strap: Stainless Steel

Inner Circumference: Approximately 17cm

Buckle: Signed, Stainless Steel Push Button Double Fold-Over
Clasp

Box: No

Papers: No

Gross Weight: Approximately 139.5 grams

No long-term tests have been performed and accuracy cannot
be guaranteed. A full service is advised on all watches and
pocket watches once purchased.

We are unable to confirm mechanical replacements or
imperfections to the movement, case, dial, pendulum, separate
base(s) or dome.

Watches with water-resistant cases may have been opened to
examine movements; no warranties are given regarding their
water resistance.

It is also important to note that we cannot guarantee the
authenticity or originality of individual components, such as
wheels, hands, crowns, crystals, screws, bracelets, and wrist
bands, since subsequent repairs and restoration may have
changed the original components. Also, we cannot guarantee
the authenticity or originality of any engraving or re-engraving
on watch cases, case backs, bracelets, straps or internal
movements. **£200-300**



Fine Jewellery, Watches & Silver, 20th Nov, 2025 09:30

293

Longines

Lady's Elegant Wristwatch

Reference: L4.309.5 (Case Back marked internally '9289/R592-595')

Serial: 47257063

Bezel: Diamond-Set

Case Material: Bi-Metal, Exhibition Case Back

Case Diameter: Approximately 25mm

Dial: Mother of Pearl, Pointed Baton Hands

Numerals: Diamond

Crown: Signed, Fluted

Movement: Longines L592.2 (ETA Calibre A20.L01) 22-Jewel Automatic Movement, marked 'XV37'

Complication: Date Aperture at three o'clock

Strap: Bi-Metal Brick-Link Strap

Inner Circumference: Approximately 16cm

Buckle: Signed, Stainless Steel Push-Button Double Fold-Over Clasp, marked 'L600140855 W' and 'GC200'

Box: No

Papers: No

Gross Weight: Approximately 58.5 grams

No long-term tests have been performed and accuracy cannot be guaranteed. A full service is advised on all watches and pocket watches once purchased.

We are unable to confirm mechanical replacements or imperfections to the movement, case, dial, pendulum, separate base(s) or dome.

Watches with water-resistant cases may have been opened to examine movements; no warranties are given regarding their water resistance.

It is also important to note that we cannot guarantee the authenticity or originality of individual components, such as wheels, hands, crowns, crystals, screws, bracelets, and wrist bands, since subsequent repairs and restoration may have changed the original components. Also, we cannot guarantee the authenticity or originality of any engraving or re-engraving on watch cases, case backs, bracelets, straps or internal movements. **£600-800**



Fine Jewellery, Watches & Silver, 20th Nov, 2025 09:30

294

TAG Heuer

Lady's Formula 1 Diamond-Set Wristwatch

Reference: WAH1215

Serial: EBE1314

Bezel: Diamond-Set

Year: Purchased 2010

Case Material: Stainless Steel

Case Diameter: Approximately 35mm

Dial: White Enamel, Luminous Dauphine Hands

Numerals: Baton, Arabic at twelve o'clock

Crown: Signed, Fluted

Movement: Quartz

Complication: Date Aperture between four and five o'clock
(Deficient)

Strap: Stainless Steel & White Ceramic

Inner Circumference: Approximately 17cm

Buckle: Signed, Push-Button Fold-Over Clasp

Box: Yes

Papers: Guarantee Card, Instruction Booklet, Gemstone
Certificate Card, Spare Strap Links Only.

Gross Weight: Approximately 103.5 grams (Excluding Spare
Links)

Please note this watch has not been opened. The movement
has not been checked and therefore cannot be guaranteed.
No long-term tests have been performed and accuracy cannot
be guaranteed. A full service is advised on all watches and
pocket watches once purchased.

We are unable to confirm mechanical replacements or
imperfections to the movement, case, dial, pendulum, separate
base(s) or dome.

Watches with water-resistant cases may have been opened to
examine movements; no warranties are given regarding their
water resistance.

It is also important to note that we cannot guarantee the
authenticity or originality of individual components, such as
wheels, hands, crowns, crystals, screws, bracelets, and wrist
bands, since subsequent repairs and restoration may have
changed the original components. Also, we cannot guarantee
the authenticity or originality of any engraving or re-engraving
on watch cases, case backs, bracelets, straps or internal
movements. **£600-800**



Fine Jewellery, Watches & Silver, 20th Nov, 2025 09:30

295

Vicence

A '9K'Dress Watch

Year: Strap Hallmarked 2002

Bezel: Smooth

Case Material: '9K' Yellow Metal

Case Diameter: Approximately 20mm

Dial: Gold-Tone, Bark Texture to Edge of Dial, Pointed Baton Hands

Numerals: Baton, Arabic at twelve o'clock

Crown: Fluted

Movement: Ronda Four-Jewel Quartz Movement

Strap: 9ct Yellow Gold Mesh Strap

Inner Circumference: Approximately 19.5cm at widest

Buckle: 9ct Yellow Gold Fold-Over Clasp

Box: Yes

Papers: No

Gross Weight: Approximately 16.8 grams

Please note this watch has not been opened. The movement has not been checked and therefore cannot be guaranteed. No long-term tests have been performed and accuracy cannot be guaranteed. A full service is advised on all watches and pocket watches once purchased.

We are unable to confirm mechanical replacements or imperfections to the movement, case, dial, pendulum, separate base(s) or dome.

Watches with water-resistant cases may have been opened to examine movements; no warranties are given regarding their water resistance.

It is also important to note that we cannot guarantee the authenticity or originality of individual components, such as wheels, hands, crowns, crystals, screws, bracelets, and wrist bands, since subsequent repairs and restoration may have changed the original components. Also, we cannot guarantee the authenticity or originality of any engraving or re-engraving on watch cases, case backs, bracelets, straps or internal movements. **£300-500**



Fine Jewellery, Watches & Silver, 20th Nov, 2025 09:30

296

A 9ct Yellow Gold Dress Watch

Bezel: Squared with canted corners, Smooth

Case Material: 9ct Yellow Gold Cache Case, signed A.L.D

Case Diameter: Approximately 25mm

Dial: Crosshatch Plaid Texture

Numerals: Black Arabic Numerals, Minute Track

Crown: Fluted

Movement: Fifteen Jewel Manual Wind Movement

Strap: After-Market Brittanica Link Strap, surface testing as 9ct

Inner Circumference: Approximately 14.0cm (Not Expanded)

Buckle: None

Box: No

Papers: No

Gross Weight: Approximately 16.3 grams

No long-term tests have been performed and accuracy cannot be guaranteed. A full service is advised on all watches and pocket watches once purchased.

We are unable to confirm mechanical replacements or imperfections to the movement, case, dial, pendulum, separate base(s) or dome.

Watches with water-resistant cases may have been opened to examine movements; no warranties are given regarding their water resistance.

It is also important to note that we cannot guarantee the authenticity or originality of individual components, such as wheels, hands, crowns, crystals, screws, bracelets, and wrist bands, since subsequent repairs and restoration may have changed the original components. Also, we cannot guarantee the authenticity or originality of any engraving or re-engraving on watch cases, case backs, bracelets, straps or internal movements. **£200-300**



Fine Jewellery, Watches & Silver, 20th Nov, 2025 09:30

297

Benrus

A 9ct Gold Dress Watch

Reference: 2765

Bezel: Smooth

Year: Hallmarked 1965

Case Material: 9ct Yellow Gold

Case Diameter: Approximately 14mm

Dial: Silvered, Pointed Baton Hands (Faceted Crystal)

Numerals: Baton

Crown: Fluted

Movement: Benrus Calibre D26.2F 17-Jewel Manual Wind Movement

Strap: After-Market Fancy-Link Strap

Inner Circumference: Approximately 16.5cm at widest

Buckle: 9ct Yellow Gold Fold-Over Clasp

Box: No

Papers: No

Gross Weight: Approximately 10.9 grams

No long-term tests have been performed and accuracy cannot be guaranteed. A full service is advised on all watches and pocket watches once purchased.

We are unable to confirm mechanical replacements or imperfections to the movement, case, dial, pendulum, separate base(s) or dome.

Watches with water-resistant cases may have been opened to examine movements; no warranties are given regarding their water resistance.

It is also important to note that we cannot guarantee the authenticity or originality of individual components, such as wheels, hands, crowns, crystals, screws, bracelets, and wrist bands, since subsequent repairs and restoration may have changed the original components. Also, we cannot guarantee the authenticity or originality of any engraving or re-engraving on watch cases, case backs, bracelets, straps or internal movements. **£150-250**



Fine Jewellery, Watches & Silver, 20th Nov, 2025 09:30

298

A 9ct Gold Wristwatch

Reference: 104.883

Year: Glasgow Import Marks for 1915

Bezel: Smooth

Case Material: 9ct Gold

Case Diameter: Approximately 32mm

Dial: White Enamel, Blued Poire Hands

Numerals: Black Arabic, Red Arabic at twelve o'clock, Minute Track

Crown: Fluted

Movement: Manual Wind Leve Platform Swiss Movement

Complication: Seconds Subsidiary Dial at six o'clock

Strap: No. Accompanied by After-Market Strap (Unmatched - Lug Space 15mm, Strap width 16mm)

Box: Unassociated Rotary Box Only.

Papers: No

Gross Weight: Approximately 25.5 grams (Excluding Strap)

No long-term tests have been performed and accuracy cannot be guaranteed. A full service is advised on all watches and pocket watches once purchased.

We are unable to confirm mechanical replacements or imperfections to the movement, case, dial, pendulum, separate base(s) or dome.

Watches with water-resistant cases may have been opened to examine movements; no warranties are given regarding their water resistance.

It is also important to note that we cannot guarantee the authenticity or originality of individual components, such as wheels, hands, crowns, crystals, screws, bracelets, and wrist bands, since subsequent repairs and restoration may have changed the original components. Also, we cannot guarantee the authenticity or originality of any engraving or re-engraving on watch cases, case backs, bracelets, straps or internal movements. **£250-350**



Fine Jewellery, Watches & Silver, 20th Nov, 2025 09:30

299

Marvin

Diamond-Set Cocktail Watch

Bezel: Diamond-Set

Case Material: Case Back marked internally 'Platinum'

Case Diameter: Approximately 17mm

Dial: Cream, Pointed Baton Hands

Numerals: Baton, Arabic at twelve, three, six and nine o'clock

Crown: Signed, Fluted

Movement: Marvin Calibre 728 17-Jewel Manual Wind

Movement, with Three Adjustments

Strap: After-Market 9ct White Gold Mesh-Link Strap

Inner Circumference: Approximately 18.0cm

Buckle: After-Market 9ct White Gold Fold-Over Clasp

Box: No

Papers: No

Gross Weight: Approximately 20.8 grams

No long-term tests have been performed and accuracy cannot be guaranteed. A full service is advised on all watches and pocket watches once purchased.

We are unable to confirm mechanical replacements or imperfections to the movement, case, dial, pendulum, separate base(s) or dome.

Watches with water-resistant cases may have been opened to examine movements; no warranties are given regarding their water resistance.

It is also important to note that we cannot guarantee the authenticity or originality of individual components, such as wheels, hands, crowns, crystals, screws, bracelets, and wrist bands, since subsequent repairs and restoration may have changed the original components. Also, we cannot guarantee the authenticity or originality of any engraving or re-engraving on watch cases, case backs, bracelets, straps or internal movements. **£600-800**



Fine Jewellery, Watches & Silver, 20th Nov, 2025 09:30

300

Boucheron

Refllet Wristwatch

Reference: AH 59094

Serial: 153.9098.47

Bezel: Grooved Linear Texture

Case Material: Stainless Steel

Case Diameter: Approximately 21mm x 32mm

Dial: Gold-Tone, Linear Texture

Numerals: None

Crown: Signed, Fluted

Movement: ETA Calibre 976.001 Six-Jewel Quartz Movement

Strap: Signed, Adjustable Black Leather Strap, marked '04E',
with additional signed black leather strap

Inner Circumference: Approximately 19cm

Buckle: None

Box: No

Papers: No

Gross Weight: Approximately 28.0 grams (excluding
secondary strap)

No long-term tests have been performed and accuracy cannot
be guaranteed. A full service is advised on all watches and
pocket watches once purchased.

We are unable to confirm mechanical replacements or
imperfections to the movement, case, dial, pendulum, separate
base(s) or dome.

Watches with water-resistant cases may have been opened to
examine movements; no warranties are given regarding their
water resistance.

It is also important to note that we cannot guarantee the
authenticity or originality of individual components, such as
wheels, hands, crowns, crystals, screws, bracelets, and wrist
bands, since subsequent repairs and restoration may have
changed the original components. Also, we cannot guarantee
the authenticity or originality of any engraving or re-engraving
on watch cases, case backs, bracelets, straps or internal
movements. **£300-500**



Fine Jewellery, Watches & Silver, 20th Nov, 2025 09:30

301

Piaget

An 18ct Yellow Gold Protocole Diamond-set Wristwatch

Reference: 99041

Serial: 279828

Bezel: 99041

Year: circa 1970

Case Material: 18ct Yellow Gold

Case Diameter: Approximately 24mm x 26mm

Dial: Diamond-Set, Leaf Hands

Numerals: None

Crown: Fluted

Movement: Piaget Calibre 9P2 18-Jewel Automatic Movement, adjusted to five positions and to temperature, numbered '7615287'

Strap: Signed, Back Leather Strap

Inner Circumference: Approximately 19.5cm at widest

Buckle: Signed, 18ct Gold Buckle

Box: No

Papers: No

Gross Weight: Approximately 35.0 grams

No long-term tests have been performed and accuracy cannot be guaranteed. A full service is advised on all watches and pocket watches once purchased.

We are unable to confirm mechanical replacements or imperfections to the movement, case, dial, pendulum, separate base(s) or dome.

Watches with water-resistant cases may have been opened to examine movements; no warranties are given regarding their water resistance.

It is also important to note that we cannot guarantee the authenticity or originality of individual components, such as wheels, hands, crowns, crystals, screws, bracelets, and wrist bands, since subsequent repairs and restoration may have changed the original components. Also, we cannot guarantee the authenticity or originality of any engraving or re-engraving on watch cases, case backs, bracelets, straps or internal movements. **£2,000-3,000**



Fine Jewellery, Watches & Silver, 20th Nov, 2025 09:30

302

Piaget

An 18ct White Gold Diamond-Set Wristwatch, with Jade Dial

Reference: 9338 A6 (Case Back marked internally '616')

Serial: 176386

Bezel: Diamond-Set

Year: Birmingham Import Mark dated 1969

Case Material: 18ct White Gold

Case Diameter: Approximately 25mm x 28mm

Dial: Signed, Jade, Dauphine Hands

Numerals: None

Crown: Fluted

Movement: Piaget Calibre 9P 18-Jewel Manual Wind Movement, Adjusted to Five Positions and Temperature, numbered '6904826'

Strap: Integral 18ct White Gold Bark-Texture Strap

Inner Circumference: Approximately 16.5cm

Buckle: Signed, 18ct White Gold Bark-Texture Fold-Over Clasp

Box: No

Papers: No

Gross Weight: Approximately 66.1 grams

No long-term tests have been performed and accuracy cannot be guaranteed. A full service is advised on all watches and pocket watches once purchased.

We are unable to confirm mechanical replacements or imperfections to the movement, case, dial, pendulum, separate base(s) or dome.

Watches with water-resistant cases may have been opened to examine movements; no warranties are given regarding their water resistance.

It is also important to note that we cannot guarantee the authenticity or originality of individual components, such as wheels, hands, crowns, crystals, screws, bracelets, and wrist bands, since subsequent repairs and restoration may have changed the original components. Also, we cannot guarantee the authenticity or originality of any engraving or re-engraving on watch cases, case backs, bracelets, straps or internal movements. **£4,000-6,000**



Fine Jewellery, Watches & Silver, 20th Nov, 2025 09:30

303

Piaget

An 18ct Yellow Gold Woven Texture Wristwatch

Reference: 9131 H12 (Case Back numbered internally '175')

Serial: 9047

Bezel: Woven-Texture

Year: Birmingham Import Mark dated 1963

Case Material: 18ct Yellow Gold

Case Diameter: Approximately 23mm

Dial: Gold-Tone, Sunburst, Gold-Tone Baton Hands

Numerals: Gold-Tone Baton

Crown: Fluted

Movement: Piaget Calibre 9P 18-Jewel Manual Wind Movement, numbered '642008'

Strap: Integral 18ct Yellow Gold Woven-Texture Strap

Inner Circumference: Approximately 19.0cm

Buckle: Signed, 18ct Yellow Gold Woven-Texture Fold-Over Clasp

Box: No

Papers: No

Gross Weight: Approximately 85.0 grams

No long-term tests have been performed and accuracy cannot be guaranteed. A full service is advised on all watches and pocket watches once purchased.

We are unable to confirm mechanical replacements or imperfections to the movement, case, dial, pendulum, separate base(s) or dome.

Watches with water-resistant cases may have been opened to examine movements; no warranties are given regarding their water resistance.

It is also important to note that we cannot guarantee the authenticity or originality of individual components, such as wheels, hands, crowns, crystals, screws, bracelets, and wrist bands, since subsequent repairs and restoration may have changed the original components. Also, we cannot guarantee the authenticity or originality of any engraving or re-engraving on watch cases, case backs, bracelets, straps or internal movements. **£4,000-6,000**



Fine Jewellery, Watches & Silver, 20th Nov, 2025 09:30

304

Kutchinsky

An 18ct Yellow Gold Wristwatch, with Tiger's Eye Dial

Reference: 1627 P (Case Back numbered internally '039')

Serial: 2355 (To Movement)

Bezel: Bark-Texture

Year: London Import Mark dated 1970

Case Material: 18ct Yellow Gold

Case Diameter: Approximately 23mm

Dial: Signed, Tiger's Eye, Dauphine Hands

Numerals: None

Crown: Signed, Fluted

Movement: Calibre 96 18-Jewel Manual Wind Movement, with Six Adjustments and numbered '2355'

Strap: Integral 18ct Yellow Gold Bark-Texture Strap

Inner Circumference: Approximately 17.0cm at widest

Buckle: Signed, 18ct Yellow Gold Bark-Texture Fold-Over Clasp

Box: No

Papers: No

Gross Weight: Approximately 100.6 grams

No long-term tests have been performed and accuracy cannot be guaranteed. A full service is advised on all watches and pocket watches once purchased.

We are unable to confirm mechanical replacements or imperfections to the movement, case, dial, pendulum, separate base(s) or dome.

Watches with water-resistant cases may have been opened to examine movements; no warranties are given regarding their water resistance.

It is also important to note that we cannot guarantee the authenticity or originality of individual components, such as wheels, hands, crowns, crystals, screws, bracelets, and wrist bands, since subsequent repairs and restoration may have changed the original components. Also, we cannot guarantee the authenticity or originality of any engraving or re-engraving on watch cases, case backs, bracelets, straps or internal movements. **£4,500-6,500**



Fine Jewellery, Watches & Silver, 20th Nov, 2025 09:30

- 305 Omega - A ruby and diamond-set concealed cocktail watch, reference number 111023, serial number 20252239 (to movement), comprising a 32mm x 42mm ruby & diamond-set whorl spray panel composed of textured graduating bars of yellow and white metal, concealing a gold-tone brushed dial with black pointed baton hands and baton numerals, the watch to a textured mesh bracelet measuring 30mm in width, completed with a fold-over clasp of the same design and stamped '18ct', inner circumference 18.5cm at widest setting, the watch featuring an Omega calibre 620 seventeen jewel movement adjusted to two positions and numbered '20252239', case back marked internally '18K'; Gross weight approximately 98.5 grams.
- No long-term tests have been performed and accuracy cannot be guaranteed. A full service is advised on all watches and pocket watches once purchased.
- We are unable to confirm mechanical replacements or imperfections to the movement, case, dial, pendulum, separate base(s) or dome.
- Watches with water-resistant cases may have been opened to examine movements; no warranties are given regarding their water resistance.
- It is also important to note that we cannot guarantee the authenticity or originality of individual components, such as wheels, hands, crowns, crystals, screws, bracelets, and wrist bands, since subsequent repairs and restoration may have changed the original components. Also, we cannot guarantee the authenticity or originality of any engraving or re-engraving on watch cases, case backs, bracelets, straps or internal movements. **£4,500-6,500**



Fine Jewellery, Watches & Silver, 20th Nov, 2025 09:30

306

Omega

'18K' Constellation Chronometer, with Pie Pan Dial

Reference: 14393/4 SC61

Serial: 18877462 (To Movement)

Year: circa 1965

Bezel: Smooth

Case Material: '18K'

Case Diameter: Approximately 34mm

Dial: Gold-Tone, Pie Pan Dial, Dauphine Hands

Numerals: Baton

Crown: Signed, Fluted

Movement: Omega Calibre 561 24-Jewel Automatic Movement, Adjusted to Five Positions and Temperature, numbered '18877462'

Complication: Date Aperture at three o'clock

Strap: After-Market Brown Leather strap with Contrast Stitching

Inner Circumference: Approximately 22.0cm at widest

Buckle: After-Market, Gold-Plated Buckle

Box: No

Papers: No

Gross Weight: Approximately 52.0 grams

No long-term tests have been performed and accuracy cannot be guaranteed. A full service is advised on all watches and pocket watches once purchased.

We are unable to confirm mechanical replacements or imperfections to the movement, case, dial, pendulum, separate base(s) or dome.

Watches with water-resistant cases may have been opened to examine movements; no warranties are given regarding their water resistance.

It is also important to note that we cannot guarantee the authenticity or originality of individual components, such as wheels, hands, crowns, crystals, screws, bracelets, and wrist bands, since subsequent repairs and restoration may have changed the original components. Also, we cannot guarantee the authenticity or originality of any engraving or re-engraving on watch cases, case backs, bracelets, straps or internal movements. **£1,500-2,500**



Fine Jewellery, Watches & Silver, 20th Nov, 2025 09:30

307

Omega

Constellation Quadra

Reference: 885.1201

Serial: 58255326

Bezel: Diamond-Set

Year: circa 2000

Case Material: Stainless Steel

Case Diameter: Approximately 30mm x 34mm

Dial: Cream Enamel

Numerals: Arabic at twelve, four and eight o'clock, Diamond at one, five, seven and eleven o'clock, Baton, Minute Track

Crown: Signed, Fluted, Two Chronograph Pushers

Movement: Omega Calibre 5200 23-Jewel Quartz Movement

Complication: Ten-Hour subsidiary dial at two o'clock, Seconds subsidiary dial at six o'clock, 30-Minute subsidiary dial at ten o'clock

Strap: Signed Brown Leather

Inner Circumference: Approximately 18cm at widest

Buckle: Signed, Stainless Steel Push-Button Fold-Over Clasp

Box: No

Papers: No

Gross Weight: Approximately 63.0 grams

No long-term tests have been performed and accuracy cannot be guaranteed. A full service is advised on all watches and pocket watches once purchased.

We are unable to confirm mechanical replacements or imperfections to the movement, case, dial, pendulum, separate base(s) or dome.

Watches with water-resistant cases may have been opened to examine movements; no warranties are given regarding their water resistance.

It is also important to note that we cannot guarantee the authenticity or originality of individual components, such as wheels, hands, crowns, crystals, screws, bracelets, and wrist bands, since subsequent repairs and restoration may have changed the original components. Also, we cannot guarantee the authenticity or originality of any engraving or re-engraving on watch cases, case backs, bracelets, straps or internal movements. **£500-700**



Fine Jewellery, Watches & Silver, 20th Nov, 2025 09:30

308

Roamer

Lady's Diamond-set Dress Watch

Reference: 651953

Serial: 40/4

Year: Purchased 2005

Bezel: Smooth, Diamond-set

Case Material: Stainless Steel

Case Diameter: Approximately 18mm x 20mm

Dial: Silvered, Dauphine Hands

Numerals: Roman at Twelve, Three, Six and Nine o'clock

Movement: 15A 275 Quartz Movement

Strap: Integral Stainless Steel Annular-Link Strap

Inner Circumference: Approximately 18.5cm at widest

Buckle: Signed, Stainless Steel Fold-Over Clasp

Box: Yes

Papers: International Guarantee Booklet and Diamond Certificate Card Only.

Gross Weight: Approximately 55.1 grams

Please note this watch has not been opened. The movement has not been checked and therefore cannot be guaranteed. No long-term tests have been performed and accuracy cannot be guaranteed. A full service is advised on all watches and pocket watches once purchased.

We are unable to confirm mechanical replacements or imperfections to the movement, case, dial, pendulum, separate base(s) or dome.

Watches with water-resistant cases may have been opened to examine movements; no warranties are given regarding their water resistance.

It is also important to note that we cannot guarantee the authenticity or originality of individual components, such as wheels, hands, crowns, crystals, screws, bracelets, and wrist bands, since subsequent repairs and restoration may have changed the original components. Also, we cannot guarantee the authenticity or originality of any engraving or re-engraving on watch cases, case backs, bracelets, straps or internal movements. **£150-250**



Fine Jewellery, Watches & Silver, 20th Nov, 2025 09:30

309

Bulova

Accutron Wristwatch

Reference: 214

Serial: B87902

Bezel: Smooth, Gold-Filled

Year: circa 1970

Case Material: Stainless Steel, Gold-Filled Bezel

Case Diameter: Approximately 35mm

Dial: Silvered, Sunburst

Numerals: Roman, Minute Track

Crown: To Case Back

Movement: Quartz

Strap: After Market Brown Leather

Inner Circumference: Approximately 21.0cm at widest

Buckle: Gold-Plated Buckle

Box: No

Papers: No

Gross Weight: Approximately 39.5 grams

No long-term tests have been performed and accuracy cannot be guaranteed. A full service is advised on all watches and pocket watches once purchased.

We are unable to confirm mechanical replacements or imperfections to the movement, case, dial, pendulum, separate base(s) or dome.

Watches with water-resistant cases may have been opened to examine movements; no warranties are given regarding their water resistance.

It is also important to note that we cannot guarantee the authenticity or originality of individual components, such as wheels, hands, crowns, crystals, screws, bracelets, and wrist bands, since subsequent repairs and restoration may have changed the original components. Also, we cannot guarantee the authenticity or originality of any engraving or re-engraving on watch cases, case backs, bracelets, straps or internal movements. **£200-300**



Fine Jewellery, Watches & Silver, 20th Nov, 2025 09:30

310

Bulova

Accutron Wristwatch

Reference: 3179

Serial: H897135

Year: circa 1970

Bezel: Smooth, Electroplated

Case Material: Stainless Steel, Gold Electroplated Bezel,
Rolled Gold Case Back

Case Diameter: Approximately 34mm x 34mm

Dial: Gold-Tone, Brushed

Numerals: Baton, Minute Track

Crown: Signed, Fluted

Movement: Bulova Calibre 2182 13-Jewel Electromechanical
Movement

Complication: Day & Date Aperture at three o'clock

Strap: After-Market Black Leather Strap

Inner Circumference: Approximately 21.0cm at widest

Buckle: Signed, Gold-Plated Buckle

Box: Yes

Papers: No

Gross Weight: Approximately 34.5 grams

No long-term tests have been performed and accuracy cannot
be guaranteed. A full service is advised on all watches and
pocket watches once purchased.

We are unable to confirm mechanical replacements or
imperfections to the movement, case, dial, pendulum, separate
base(s) or dome.

Watches with water-resistant cases may have been opened to
examine movements; no warranties are given regarding their
water resistance.

It is also important to note that we cannot guarantee the
authenticity or originality of individual components, such as
wheels, hands, crowns, crystals, screws, bracelets, and wrist
bands, since subsequent repairs and restoration may have
changed the original components. Also, we cannot guarantee
the authenticity or originality of any engraving or re-engraving
on watch cases, case backs, bracelets, straps or internal
movements. **£200-300**



Fine Jewellery, Watches & Silver, 20th Nov, 2025 09:30

311

Festina

Titanium Quartz Chronograph

Reference: 7159-2

Year: Purchased 1998

Bezel: Uni-Directional

Case Material: Titanium

Case Diameter: Approximately 38mm

Dial: Grey, Luminous Pointed Baton Hands

Numerals: Luminous Baton, Minute Track, Tachymeter to Rehaut

Crown: Fluted, Two Chronograph Pushers

Movement: Miyota Calibre 0560 No-Jewel Quartz Movement

Complication: Centre Chronograph Seconds, Date Aperture at three o'clock, Hour Subsidiary Dial at twelve o'clock, 1/12 Second Subsidiary Dial at six o'clock, 12-Hour Subsidiary Dial at nine o'clock.

Strap: Integral Titanium Strap

Inner Circumference: Approximately 19cm

Buckle: Signed, Titanium Fold-Over Clasp

Box: Yes

Papers: International Certificate of Guarantee Booklet and Chronograph Instructions Booklet Only.

Gross Weight: Approximately 77.7 grams

Please note this watch has not been opened. The movement has not been checked and therefore cannot be guaranteed.

No long-term tests have been performed and accuracy cannot be guaranteed. A full service is advised on all watches and pocket watches once purchased.

We are unable to confirm mechanical replacements or imperfections to the movement, case, dial, pendulum, separate base(s) or dome.

Watches with water-resistant cases may have been opened to examine movements; no warranties are given regarding their water resistance.

It is also important to note that we cannot guarantee the authenticity or originality of individual components, such as wheels, hands, crowns, crystals, screws, bracelets, and wrist bands, since subsequent repairs and restoration may have changed the original components. Also, we cannot guarantee the authenticity or originality of any engraving or re-engraving on watch cases, case backs, bracelets, straps or internal movements. **£150-250**



Fine Jewellery, Watches & Silver, 20th Nov, 2025 09:30

312

Longines

A Gold-Plated Wristwatch

Reference: L4.636.2

Serial: 27823638

Bezel: Smooth

Case Material: Gold-Plated Stainless Steel

Case Diameter: Approximately 32mm

Dial: Gold-Tone

Numerals: Baton, Minute Track

Crown: Fluted

Movement: Calibre L263.2 (ETA Calibre 966.412) Seven-Jewel Quartz Movement

Complication: Date Aperture at three o'clock

Strap: After-Market Baume & Mercier Brown Leather Strap

Inner Circumference: Approximately 20.0cm at widest

Buckle: After-Market Baume & Mercier Gold-Plated Buckle

Box: No

Papers: No

Gross Weight: Approximately 27.0 grams

Please note this watch has not been opened. The movement has not been checked and therefore cannot be guaranteed. No long-term tests have been performed and accuracy cannot be guaranteed. A full service is advised on all watches and pocket watches once purchased.

We are unable to confirm mechanical replacements or imperfections to the movement, case, dial, pendulum, separate base(s) or dome.

Watches with water-resistant cases may have been opened to examine movements; no warranties are given regarding their water resistance.

It is also important to note that we cannot guarantee the authenticity or originality of individual components, such as wheels, hands, crowns, crystals, screws, bracelets, and wrist bands, since subsequent repairs and restoration may have changed the original components. Also, we cannot guarantee the authenticity or originality of any engraving or re-engraving on watch cases, case backs, bracelets, straps or internal movements. **£200-300**



Fine Jewellery, Watches & Silver, 20th Nov, 2025 09:30

313

Dunhill

Octagonal Wristwatch

Reference: 114

Serial: 10114

Bezel: Smooth

Case Material: Stainless Steel

Case Diameter: Approximately 27mm x 32mm

Dial: Silvered, Blue Breguet Hands

Numerals: Black Arabic, Minute Track

Crown: Fluted

Movement: Dunhill (ETA Calibre 2066) 17-Jewel Manual-Wind Movement

Strap: After-Market, Black Leather

Inner Circumference: Approximately 22mm at widest

Buckle: Signed, Stainless Steel Buckle

Box: No

Papers: No

Gross Weight: 30.5 grams

No long-term tests have been performed and accuracy cannot be guaranteed. A full service is advised on all watches and pocket watches once purchased.

We are unable to confirm mechanical replacements or imperfections to the movement, case, dial, pendulum, separate base(s) or dome.

Watches with water-resistant cases may have been opened to examine movements; no warranties are given regarding their water resistance.

It is also important to note that we cannot guarantee the authenticity or originality of individual components, such as wheels, hands, crowns, crystals, screws, bracelets, and wrist bands, since subsequent repairs and restoration may have changed the original components. Also, we cannot guarantee the authenticity or originality of any engraving or re-engraving on watch cases, case backs, bracelets, straps or internal movements. **£500-700**



Fine Jewellery, Watches & Silver, 20th Nov, 2025 09:30

314

Dunhill

Millenium Wristwatch

Reference: 8000

Serial: CC 19078

Bezel: Smooth

Case Material: Brushed Stainless Steel

Case Diameter: Approximately 26mm

Dial: Blue Enamel, Pointed Baton Hands

Numerals: Silvered Roman Numerals, Minute Track

Crown: Fluted

Movement: ETA Calibre 956.112 Seven-Jewel Quartz
Movement

Complication: Date Aperture at six o'clock

Strap: Stainless Steel Wave-Link Strap

Inner Circumference: Approximately 16cm

Buckle: Signed, Stainless Steel Double Fold-Over Clasp

Box: Yes

Papers: No

Gross Weight: Approximately 62.0 grams

No long-term tests have been performed and accuracy cannot be guaranteed. A full service is advised on all watches and pocket watches once purchased.

We are unable to confirm mechanical replacements or imperfections to the movement, case, dial, pendulum, separate base(s) or dome.

Watches with water-resistant cases may have been opened to examine movements; no warranties are given regarding their water resistance.

It is also important to note that we cannot guarantee the authenticity or originality of individual components, such as wheels, hands, crowns, crystals, screws, bracelets, and wrist bands, since subsequent repairs and restoration may have changed the original components. Also, we cannot guarantee the authenticity or originality of any engraving or re-engraving on watch cases, case backs, bracelets, straps or internal movements. **£300-500**



Fine Jewellery, Watches & Silver, 20th Nov, 2025 09:30

315

TAG Heuer
Carrera Calibre 6 Heritage
Reference: WAS2111
Serial: RAJ1966
Bezel: Smooth
Year: Purchased 2014
Case Material: Stainless Steel
Case Diameter: Approximately 38mm
Dial: Silvered, Scalloped, Sectioned, Blue Sword Hands
Numerals: Blue, Arabic, Minute Track to Rehaut
Crown: Signed, Fluted
Movement: TAG Heuer Calibre 6 (ETA Calibre 2895-2) 27-Jewel Automatic Movement, marked 'V8ZP1'
Complication: Seconds Subsidiary Dial and Date Aperture at six o'clock
Strap: Signed, Black Leather
Inner Circumference: Approximately 15cm
Buckle: Signed, Push-Button Fold-Over Clasp
Box: Yes
Papers: Guarantee Card, Instruction Booklet and Purchase Receipt Only.
Gross Weight: Approximately 76.0 grams
No long-term tests have been performed and accuracy cannot be guaranteed. A full service is advised on all watches and pocket watches once purchased.
We are unable to confirm mechanical replacements or imperfections to the movement, case, dial, pendulum, separate base(s) or dome.
Watches with water-resistant cases may have been opened to examine movements; no warranties are given regarding their water resistance.
It is also important to note that we cannot guarantee the authenticity or originality of individual components, such as wheels, hands, crowns, crystals, screws, bracelets, and wrist bands, since subsequent repairs and restoration may have changed the original components. Also, we cannot guarantee the authenticity or originality of any engraving or re-engraving on watch cases, case backs, bracelets, straps or internal movements. **£600-800**



Fine Jewellery, Watches & Silver, 20th Nov, 2025 09:30

316

TAG Heuer

Lady's Bi-Colour Diamond-set Aquaracer Wristwatch

Reference: WAF1350

Serial: RAG0322

Bezel: Diamond-set, Uni-Directional

Case Material: Stainless Steel & Gold-Plated Stainless Steel

Case Diameter: Approximately 32mm

Dial: Mother of Pearl, De-Badged

Numerals: Diamond, Minute Track

Crown: Signed, Fluted

Movement: ETA Calibre F06.111 Three-Jewel Quartz
Movement, marked 'N1' and 'AN3#'

Complication: Date Aperture at three o'clock

Strap: Stainless Steel & Gold-Plated Stainless Steel Strap,
marked 'G' and '3134'

Inner Circumference: Approximately 16cm

Buckle: Signed, Stainless Steel, Push-Button Fold-Over Clasp

Box: No

Papers: No

Gross Weight: Approximately 95.0 grams

No long-term tests have been performed and accuracy cannot be guaranteed. A full service is advised on all watches and pocket watches once purchased.

We are unable to confirm mechanical replacements or imperfections to the movement, case, dial, pendulum, separate base(s) or dome.

Watches with water-resistant cases may have been opened to examine movements; no warranties are given regarding their water resistance.

It is also important to note that we cannot guarantee the authenticity or originality of individual components, such as wheels, hands, crowns, crystals, screws, bracelets, and wrist bands, since subsequent repairs and restoration may have changed the original components. Also, we cannot guarantee the authenticity or originality of any engraving or re-engraving on watch cases, case backs, bracelets, straps or internal movements. **£400-600**



Fine Jewellery, Watches & Silver, 20th Nov, 2025 09:30

- 317 A diamond and sapphire-set cocktail watch, comprising a silvered dial with black Arabic numerals and poire hands, enclosed within a case highlighted with single-cut diamonds and calibre-cut blue sapphires, to an after-market blue leather strap with stainless steel buckle, inner circumference approximately 18.0cm, featuring a Florio sixteen jewel manual-wind movement, gross weight approximately 13.5 grams. No long-term tests have been performed and accuracy cannot be guaranteed. A full service is advised on all watches and pocket watches once purchased. We are unable to confirm mechanical replacements or imperfections to the movement, case, dial, pendulum, separate base(s) or dome. Watches with water-resistant cases may have been opened to examine movements; no warranties are given regarding their water resistance. It is also important to note that we cannot guarantee the authenticity or originality of individual components, such as wheels, hands, crowns, crystals, screws, bracelets, and wrist bands, since subsequent repairs and restoration may have changed the original components. Also, we cannot guarantee the authenticity or originality of any engraving or re-engraving on watch cases, case backs, bracelets, straps or internal movements. **£400-600**



Fine Jewellery, Watches & Silver, 20th Nov, 2025 09:30

318

Hermes

Arceau Wristwatch

Reference: 69.03

Serial: 748107

Bezel: Gold-Plated, Smooth

Case Material: Stainless Steel & Gold-Plated Stainless Steel

Case Diameter: Approximately 33mm

Dial: White Enamel, Baton Hands

Numerals: Arabic, Minute Track

Crown: Signed, Fluted

Movement: Quartz

Strap: Gold-Plated Stainless Steel & Stainless Steel H-Link Strap

Inner Circumference: Approximately 19.5cm at widest

Buckle: Stainless Steel Fold-Over Clasp

Box: No

Papers: No

Gross Weight: Approximately 64.4 grams

Please note this watch has not been opened. The movement has not been checked and therefore cannot be guaranteed. No long-term tests have been performed and accuracy cannot be guaranteed. A full service is advised on all watches and pocket watches once purchased.

We are unable to confirm mechanical replacements or imperfections to the movement, case, dial, pendulum, separate base(s) or dome.

Watches with water-resistant cases may have been opened to examine movements; no warranties are given regarding their water resistance.

It is also important to note that we cannot guarantee the authenticity or originality of individual components, such as wheels, hands, crowns, crystals, screws, bracelets, and wrist bands, since subsequent repairs and restoration may have changed the original components. Also, we cannot guarantee the authenticity or originality of any engraving or re-engraving on watch cases, case backs, bracelets, straps or internal movements. **£200-300**



Fine Jewellery, Watches & Silver, 20th Nov, 2025 09:30

319

Bulova

Accutron Spaceview Wristwatch

Reference: 7396

Serial: 1-865508

Bezel: Smooth

Year: circa 1973

Case Material: Gold-Plated Stainless Steel

Case Diameter: Approximately 36mm x 36mm

Dial: Skeleton

Numerals: Luminous Baton (To Rehaut)

Crown: To Case Back

Movement: Bulova Calibre 214 Quartz Movement

Strap: Gold-Plated Stainless Steel

Inner Circumference: Approximately 17.0cm

Buckle: Signed, Gold-Plated Fold-Over Clasp

Box: No

Papers: No

Gross Weight: Approximately 95.5 grams

Please note this watch has not been opened. The movement has not been checked and therefore cannot be guaranteed. No long-term tests have been performed and accuracy cannot be guaranteed. A full service is advised on all watches and pocket watches once purchased.

We are unable to confirm mechanical replacements or imperfections to the movement, case, dial, pendulum, separate base(s) or dome.

Watches with water-resistant cases may have been opened to examine movements; no warranties are given regarding their water resistance.

It is also important to note that we cannot guarantee the authenticity or originality of individual components, such as wheels, hands, crowns, crystals, screws, bracelets, and wrist bands, since subsequent repairs and restoration may have changed the original components. Also, we cannot guarantee the authenticity or originality of any engraving or re-engraving on watch cases, case backs, bracelets, straps or internal movements. **£200-300**



Fine Jewellery, Watches & Silver, 20th Nov, 2025 09:30

320

TAG Heuer
Aquaracer
Reference: WAF1112
Serial: CU2046
Bezel: Uni-Directional
Case Material: Stainless Steel
Case Diameter: Approximately 40mm
Dial: Silvered, Sunburst, Luminous Baton
Numerals: Luminous Baton, Arabic at twelve o'clock
Crown: Signed, Fluted
Movement: ETA F06.111 Three Jewel Quartz Movement
Complication: Date Aperture at three o'clock
Strap: Stainless Steel, marked '3091'
Inner Circumference: Approximately 18cm
Buckle: Signed, Stainless Steel Fold-Over Clasp
Box: Yes
Papers: No
Gross Weight: Approximately 123.5 grams
No long-term tests have been performed and accuracy cannot be guaranteed. A full service is advised on all watches and pocket watches once purchased.
We are unable to confirm mechanical replacements or imperfections to the movement, case, dial, pendulum, separate base(s) or dome.
Watches with water-resistant cases may have been opened to examine movements; no warranties are given regarding their water resistance.
It is also important to note that we cannot guarantee the authenticity or originality of individual components, such as wheels, hands, crowns, crystals, screws, bracelets, and wrist bands, since subsequent repairs and restoration may have changed the original components. Also, we cannot guarantee the authenticity or originality of any engraving or re-engraving on watch cases, case backs, bracelets, straps or internal movements. **£500-700**



Fine Jewellery, Watches & Silver, 20th Nov, 2025 09:30

321

Breitling

Wings Automatic Wristwatch

Reference: B10050

Serial: 6119

Bezel: Uni-Directional

Year: Purchased 2000

Case Material: Stainless Steel

Case Diameter: Approximately 37mm

Dial: Cream, Central Hobnail Texture

Numerals: Baton, Arabic at twelve, six and nine o'clock, Minute Track

Crown: Fluted

Movement: Breitling 21 Jewel Automatic Movement (ETA Calibre 2892A8 38-Jewel Movement marked '02/A217')

Complication: Date Aperture at three o'clock

Strap: Breitling Stainless Steel Bar Link Strap

Inner Circumference: Approximately 18cm

Buckle: Signed, Stainless Steel Double Fold-Over Clasp

Box: Yes. Inner and Outer (Inner Box Hinge Broken)

Papers: International Warranty, Breitling Automatic II Booklet and Authorised Distributors Booklet Only.

Gross Weight: Approximately 153.5 grams

No long-term tests have been performed and accuracy cannot be guaranteed. A full service is advised on all watches and pocket watches once purchased.

We are unable to confirm mechanical replacements or imperfections to the movement, case, dial, pendulum, separate base(s) or dome.

Watches with water-resistant cases may have been opened to examine movements; no warranties are given regarding their water resistance.

It is also important to note that we cannot guarantee the authenticity or originality of individual components, such as wheels, hands, crowns, crystals, screws, bracelets, and wrist bands, since subsequent repairs and restoration may have changed the original components. Also, we cannot guarantee the authenticity or originality of any engraving or re-engraving on watch cases, case backs, bracelets, straps or internal movements. **£700-900**



Fine Jewellery, Watches & Silver, 20th Nov, 2025 09:30

322

Bremont

Arrow Wristwatch

Reference: Arrow R-S

Serial: 51411

Year: Purchased 2021

Bezel: Smooth

Case Material: Stainless Steel

Case Diameter: Approximately 42mm

Dial: Black, Luminous Baton Hands

Numerals: Arabic, Minute Track

Crown: Signed, Fluted, One Chronograph Pusher

Movement: BE-51AE 27-Jewel Automatic Movement

Complication: Chronograph Centre Seconds, Date Aperture at six o'clock, 30-Minute Subsidiary Dial at three o'clock, Seconds Subsidiary Dial at nine o'clock

Strap: Nato Grey Striped Strap

Inner Circumference: Approximately 16cm at smallest, 26cm at widest

Buckle: Signed Stainless Steel Buckle

Box: Travel Case and Blue Leather Pouch with Outer Box Only.

Papers: International Warranty Booklet, Warranty Registration Card, Chronometers Booklet, ISO 3159 Test Certificate Only.

Gross Weight: Approximately 121.0 grams

No long-term tests have been performed and accuracy cannot be guaranteed. A full service is advised on all watches and pocket watches once purchased.

We are unable to confirm mechanical replacements or imperfections to the movement, case, dial, pendulum, separate base(s) or dome.

Watches with water-resistant cases may have been opened to examine movements; no warranties are given regarding their water resistance.

It is also important to note that we cannot guarantee the authenticity or originality of individual components, such as wheels, hands, crowns, crystals, screws, bracelets, and wrist bands, since subsequent repairs and restoration may have changed the original components. Also, we cannot guarantee the authenticity or originality of any engraving or re-engraving on watch cases, case backs, bracelets, straps or internal movements. **£1,500-2,000**



Fine Jewellery, Watches & Silver, 20th Nov, 2025 09:30

323

Omega

Constellation

Reference: 367.5435

Serial: 23658382 (To Movement)

Bezel: Textured, Engine Turned

Year: Hallmarked London 1969

Case Material: 18ct Yellow Gold

Case Diameter: Approximately 32mm

Dial: Gold-Tone, Brushed, Black Pointed Baton Hands

Numerals: Baton

Crown: Fluted

Movement: Omega Calibre 712 24-Jewel Automatic

Movement, Adjusted to Five Positions, numbered '23658382'

Strap: 18ct Yellow Gold Mesh Bracelet

Inner Circumference: Approximately 17cm

Buckle: Signed, 18ct Yellow Gold, Fold-Over Clasp

Box: No

Papers: No

Gross Weight: Approximately 85.0 grams

No long-term tests have been performed and accuracy cannot be guaranteed. A full service is advised on all watches and pocket watches once purchased.

We are unable to confirm mechanical replacements or imperfections to the movement, case, dial, pendulum, separate base(s) or dome.

Watches with water-resistant cases may have been opened to examine movements; no warranties are given regarding their water resistance.

It is also important to note that we cannot guarantee the authenticity or originality of individual components, such as wheels, hands, crowns, crystals, screws, bracelets, and wrist bands, since subsequent repairs and restoration may have changed the original components. Also, we cannot guarantee the authenticity or originality of any engraving or re-engraving on watch cases, case backs, bracelets, straps or internal movements. **£4,000-6,000**



Fine Jewellery, Watches & Silver, 20th Nov, 2025 09:30

324

Rolex
Oyster Perpetual Date
Reference: 15210
Serial: 7225760 (?) (Worn and partly illegible)
Bezel: Engine-Turned
Year: circa 1982
Case Material: Stainless Steel
Case Diameter: Approximately 34mm
Dial: White, Baton Hands
Numerals: Baton, Minute Track
Crown: Rolex Twinlock
Movement: Rolex Calibre 3135 31-Jewel Automatic Movement



Complication: Date Aperture with Cyclops Magnifier at three o'clock
Strap: Rolex Stainless Steel Oyster Strap, marked '557 B' and '78350-19'
Inner Circumference: Approximately 17cm
Buckle: Rolex Stainless Steel Fold-Over Clasp, marked '78350'
Box: No
Papers: No
Gross Weight: Approximately 88.0 grams
No long-term tests have been performed and accuracy cannot be guaranteed. A full service is advised on all watches and pocket watches once purchased.
We are unable to confirm mechanical replacements or imperfections to the movement, case, dial, pendulum, separate base(s) or dome.
Watches with water-resistant cases may have been opened to examine movements; no warranties are given regarding their water resistance.
It is also important to note that we cannot guarantee the authenticity or originality of individual components, such as wheels, hands, crowns, crystals, screws, bracelets, and wrist bands, since subsequent repairs and restoration may have changed the original components. Also, we cannot guarantee the authenticity or originality of any engraving or re-engraving on watch cases, case backs, bracelets, straps or internal movements. **£1,500-2,000**

Fine Jewellery, Watches & Silver, 20th Nov, 2025 09:30

325

Montblanc

Nicolas Rieussec Chronograph

Reference: 7138

Serial: PB 249459

Bezel: Smooth

Case Material: Stainless Steel, Exhibition Case Back

Case Diameter: Approximately 40mm

Dial: Grey, Stainless Steel Section to lower half of dial,
Luminous and Blued Leaf Hands

Numerals: Black Arabic Numerals, Minute Track

Crown: Signed, Fluted

Movement: Montblanc Calibre MBR 200 40-Jewel Automatic
Movement, Adjusted to Five Positions, numbered '102396'.

Complication: Dual Time, 30-Minute Subsidiary Dial at five
o'clock, Seconds Subsidiary Dial at seven o'clock, Date
Aperture at three o'clock

Strap: Stainless Steel

Inner Circumference: Approximately 19cm

Buckle: Signed, Stainless Steel Push Button Double Fold-Over
Clasp

Box: Yes

Papers: Service Guide Booklet Only.

Gross Weight: Approximately 185.0 grams

No long-term tests have been performed and accuracy cannot
be guaranteed. A full service is advised on all watches and
pocket watches once purchased.

We are unable to confirm mechanical replacements or
imperfections to the movement, case, dial, pendulum, separate
base(s) or dome.

Watches with water-resistant cases may have been opened to
examine movements; no warranties are given regarding their
water resistance.

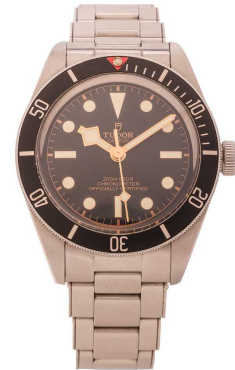
It is also important to note that we cannot guarantee the
authenticity or originality of individual components, such as
wheels, hands, crowns, crystals, screws, bracelets, and wrist
bands, since subsequent repairs and restoration may have
changed the original components. Also, we cannot guarantee
the authenticity or originality of any engraving or re-engraving
on watch cases, case backs, bracelets, straps or internal
movements. **£2,500-3,500**



Fine Jewellery, Watches & Silver, 20th Nov, 2025 09:30

326

Tudor
Black Bay 58
Reference: 79030N
Serial: 436Y720
Year: Purchased 2022
Bezel: Uni-Directional
Case Material: Stainless Steel
Case Diameter: Approximately 39mm
Dial: Black, Snowflake Hands
Numerals: Dot, Baton at three, six and nine o'clock, Triangle at twelve o'clock, Minute Track
Crown: Signed, Fluted
Movement: Tudor Calibre MT5402 27-Jewel Automatic Movement, numbered 'T9554110X9'
Strap: Stainless Steel, marked 'C UZ01', '72040' and '698'
Inner Circumference: Approximately 19cm
Buckle: Signed, Stainless Steel Fold-Over Clasp
Box: Yes
Papers: International Guarantee Card, User Manual Booklet, Chronometer Certification Booklet Only.
Gross Weight: Approximately 142.0 grams
No long-term tests have been performed and accuracy cannot be guaranteed. A full service is advised on all watches and pocket watches once purchased.
We are unable to confirm mechanical replacements or imperfections to the movement, case, dial, pendulum, separate base(s) or dome.
Watches with water-resistant cases may have been opened to examine movements; no warranties are given regarding their water resistance.
It is also important to note that we cannot guarantee the authenticity or originality of individual components, such as wheels, hands, crowns, crystals, screws, bracelets, and wrist bands, since subsequent repairs and restoration may have changed the original components. Also, we cannot guarantee the authenticity or originality of any engraving or re-engraving on watch cases, case backs, bracelets, straps or internal movements. **£2,000-3,000**



Fine Jewellery, Watches & Silver, 20th Nov, 2025 09:30

327

Chopard

Mille Miglia Gran Turismo XL

Reference: 16/8997

Serial: 1248826

Bezel: Smooth

Case Material: Stainless Steel

Case Diameter: Approximately 44mm

Dial: Black, Luminous Pointed Batons Hands

Numerals: Luminous Baton, Luminous Arabic at twelve and six o'clock, Minute Track

Crown: Signed, Fluted

Movement: Chopard Calibre 09/50 24-Jewel Automatic Movement, Adjusted to Five Positions, numbered '64924'

Complication: Date Aperture at with magnifier at three o'clock

Strap: Signed Black Rubber Strap

Inner Circumference: Approximately 19cm

Buckle: Signed, Stainless Steel Push-Button Fold-Over Clasp

Box: No

Papers: No

Gross Weight: Approximately 146.0 grams

No long-term tests have been performed and accuracy cannot be guaranteed. A full service is advised on all watches and pocket watches once purchased.

We are unable to confirm mechanical replacements or imperfections to the movement, case, dial, pendulum, separate base(s) or dome.

Watches with water-resistant cases may have been opened to examine movements; no warranties are given regarding their water resistance.

It is also important to note that we cannot guarantee the authenticity or originality of individual components, such as wheels, hands, crowns, crystals, screws, bracelets, and wrist bands, since subsequent repairs and restoration may have changed the original components. Also, we cannot guarantee the authenticity or originality of any engraving or re-engraving on watch cases, case backs, bracelets, straps or internal movements. **£1,500-2,000**



Fine Jewellery, Watches & Silver, 20th Nov, 2025 09:30

328

Cartier

18ct Yellow Gold Ballon Bleu Wristwatch

Reference: 3002

Serial: 115596QX

Year: Contemporary

Bezel: Smooth

Case Material: 18ct Yellow Gold

Case Diameter: Approximately 36mm

Dial: Silvered, Scalloped Segment Texture to Centre, Blued
Sword Hands, Signed at Seven o'clock

Numerals: Black Roman Numerals, Minute Track

Crown: Fluted, Protected Blue Cabochon

Movement: Cartier Calibre 076 Automatic Movement

Strap: H-Link Strap, marked 'CEQK 12H'

Inner Circumference: Approximately 15cm

Buckle: Signed, 18ct Yellow Gold Double Fold-Over Clasp

Box: No

Papers: No

Gross Weight: Approximately 142.0 grams

No long-term tests have been performed and accuracy cannot be guaranteed. A full service is advised on all watches and pocket watches once purchased.

We are unable to confirm mechanical replacements or imperfections to the movement, case, dial, pendulum, separate base(s) or dome.

Watches with water-resistant cases may have been opened to examine movements; no warranties are given regarding their water resistance.

It is also important to note that we cannot guarantee the authenticity or originality of individual components, such as wheels, hands, crowns, crystals, screws, bracelets, and wrist bands, since subsequent repairs and restoration may have changed the original components. Also, we cannot guarantee the authenticity or originality of any engraving or re-engraving on watch cases, case backs, bracelets, straps or internal movements. **£7,000-9,000**



Fine Jewellery, Watches & Silver, 20th Nov, 2025 09:30

329

Rolex

An 18ct Yellow Gold 'Tiger's Eye' Oyster Perpetual Datejust

Reference: 1601

Serial: 3921200

Bezel: Fluted

Year: London Import Marks 1975

Case Material: 18ct Yellow Gold

Case Diameter: Approximately 34mm

Dial: Tiger's Eye, Baton Hands

Numerals: None

Crown: Rolex Twinlock

Movement: Rolex Calibre 1570 26-Jewel Automatic movement, adjusted to 5 positions and temperature, numbered 'D725833'

Complication: Date Aperture with cyclops magnifier at three o'clock

Strap: Rolex Jubilee Strap

Inner Circumference: Approximately 17.0cm

Buckle: Signed, 18ct Yellow Gold Fold-Over Clasp

Box: No

Papers: No

Gross Weight: Approximately 115.0 grams

No long-term tests have been performed and accuracy cannot be guaranteed. A full service is advised on all watches and pocket watches once purchased.

We are unable to confirm mechanical replacements or imperfections to the movement, case, dial, pendulum, separate base(s) or dome.

Watches with water-resistant cases may have been opened to examine movements; no warranties are given regarding their water resistance.

It is also important to note that we cannot guarantee the authenticity or originality of individual components, such as wheels, hands, crowns, crystals, screws, bracelets, and wrist bands, since subsequent repairs and restoration may have changed the original components. Also, we cannot guarantee the authenticity or originality of any engraving or re-engraving on watch cases, case backs, bracelets, straps or internal movements. **£15,000-20,000**



Fine Jewellery, Watches & Silver, 20th Nov, 2025 09:30

330

Patek Philippe

Gentleman's Platinum Calatrava Dress Watch

Reference: 5107P-001

Serial: 3405927

Case Number: 4295617

Bezel: Smooth

Case Material: Platinum, Detailed with a Round Brilliant-cut Diamond Flush-set between the lugs at six o'clock (Estimated at 0.3ct)

Case Diameter: Approximately 36mm

Dial: Black, Dauphine Hands

Numerals: Baton, Minute Track

Crown: Signed, Fluted

Movement: Patek Philippe Calibre 315/290 29-Jewel Automatic Movement, Adjusted to Heat Cold Isochronism and Five Positions, numbered '3405927'

Complication: Date Aperture at three o'clock

Strap: Signed, Brown Leather Strap

Inner Circumference: Approximately 21.0cm at widest

Buckle: Signed Platinum Buckle

Box: Yes, Inner Box (Poor Condition), Outer Box and Travel Pouch

Papers: Certificate of Origin Only.

Gross Weight: Approximately 89.5 grams

No long-term tests have been performed and accuracy cannot be guaranteed. A full service is advised on all watches and pocket watches once purchased.

We are unable to confirm mechanical replacements or imperfections to the movement, case, dial, pendulum, separate base(s) or dome.

Watches with water-resistant cases may have been opened to examine movements; no warranties are given regarding their water resistance.

It is also important to note that we cannot guarantee the authenticity or originality of individual components, such as wheels, hands, crowns, crystals, screws, bracelets, and wrist bands, since subsequent repairs and restoration may have changed the original components. Also, we cannot guarantee the authenticity or originality of any engraving or re-engraving on watch cases, case backs, bracelets, straps or internal movements. **£20,000-25,000**



Fine Jewellery, Watches & Silver, 20th Nov, 2025 09:30

331

IWC

B-UHR Pilot's Navigation Watch

Reference: FL23883

Serial: 1034044

Year: circa 1940s

Bezel: Smooth

Case Material: Stainless Steel

Case Diameter: Approximately 55mm

Dial: Black, Radium-filled Sword Hands

Numerals: Arabic, Minute Track

Crown: Fluted (Potential Replacement)

Movement: IWC, numbered '1014704'

Strap: Deficient

Gross Weight: Approximately 148.5 grams

No long-term tests have been performed and accuracy cannot be guaranteed. A full service is advised on all watches and pocket watches once purchased.

We are unable to confirm mechanical replacements or imperfections to the movement, case, dial, pendulum, separate base(s) or dome.

Watches with water-resistant cases may have been opened to examine movements; no warranties are given regarding their water resistance.

It is also important to note that we cannot guarantee the authenticity or originality of individual components, such as wheels, hands, crowns, crystals, screws, bracelets, and wrist bands, since subsequent repairs and restoration may have changed the original components. Also, we cannot guarantee the authenticity or originality of any engraving or re-engraving on watch cases, case backs, bracelets, straps or internal movements. **£5,000-8,000**



Fine Jewellery, Watches & Silver, 20th Nov, 2025 09:30

332

A Lady's '18K' Full-Hunter Pocket Watch

Serial: 32795

Case Material: '18K' Yellow Metal, Engraved with Foliate Design

Case Diameter: Approximately 34mm

Dial: Gold-Tone, Foliate Engraving to Centre

Numerals: Black Roman Numerals, Minute Track

Movement: Key-Wound

Box: No

Papers: No

Gross Weight: 32.0 grams (Excluding Key)

No long-term tests have been performed and accuracy cannot be guaranteed. A full service is advised on all watches and pocket watches once purchased.

We are unable to confirm mechanical replacements or imperfections to the movement, case, dial, pendulum, separate base(s) or dome.

Watches with water-resistant cases may have been opened to examine movements; no warranties are given regarding their water resistance.

It is also important to note that we cannot guarantee the authenticity or originality of individual components, such as wheels, hands, crowns, crystals, screws, bracelets, and wrist bands, since subsequent repairs and restoration may have changed the original components. Also, we cannot guarantee the authenticity or originality of any engraving or re-engraving on watch cases, case backs, bracelets, straps or internal movements. **£400-600**



Fine Jewellery, Watches & Silver, 20th Nov, 2025 09:30

- 333 **A Lady's '14K Open Face Pocket Watch and Chain**
Reference: 32859
Case Material: '14K'
Case Diameter: Approximately 34mm
Dial: White, with Raised Gilt Detail and Pierced Rococo Hands

Numerals: Roman, Minute Track

Movement: 15 Jewel Keyless Bar Movement

Accompanied By: A 'Dot-Dash' fancy single Albert chain with clip and "T" bar, the spring clip marked 9ct, measuring 31cm in length.

Gross Weight: Watch weighing approximately 28.9 grams.

Chain weighing approximately 10.0 grams.

No long-term tests have been performed and accuracy cannot be guaranteed. A full service is advised on all watches and pocket watches once purchased.

We are unable to confirm mechanical replacements or imperfections to the movement, case, dial, pendulum, separate base(s) or dome.

Watches with water-resistant cases may have been opened to examine movements; no warranties are given regarding their water resistance.

It is also important to note that we cannot guarantee the authenticity or originality of individual components, such as wheels, hands, crowns, crystals, screws, bracelets, and wrist bands, since subsequent repairs and restoration may have changed the original components. Also, we cannot guarantee the authenticity or originality of any engraving or re-engraving on watch cases, case backs, bracelets, straps or internal movements. **£500-700**



- 334 The Wilka Callendar, a yellow metal open cased fob watch with moonphase complication and perpetual calendar to the reverse, the "Roman" dial with secondary dial at 6 o'clock. (In need of restoration) 70 grams gross weight. 47 mm diameter case.
- No long-term tests have been performed and accuracy cannot be guaranteed. A full service is advised on all watches and pocket watches once purchased.
- We are unable to confirm mechanical replacements or imperfections to the movement, case, dial, pendulum, separate base(s) or dome.
- Watches with water-resistant cases may have been opened to examine movements; no warranties are given regarding their water resistance.
- It is also important to note that we cannot guarantee the authenticity or originality of individual components, such as wheels, hands, crowns, crystals, screws, bracelets, and wrist bands, since subsequent repairs and restoration may have changed the original components. Also, we cannot guarantee the authenticity or originality of any engraving or re-engraving on watch cases, case backs, bracelets, straps or internal movements. **£400-600**



Fine Jewellery, Watches & Silver, 20th Nov, 2025 09:30

335

Election

A '14K Open Face Pocket Watch

Serial: 102200

Case Material: '14K' (Stamped with Swiss Squirrel Mark indicating 14ct)

Case Diameter: Approximately 47mm

Dial: Cream, Gold Tone Breguet-Style Hands

Numerals: Black Roman Numerals, Minute Track

Crown: Fluted

Movement: Manual Wind Jewelled Movement, adjusted to five positions

Complication: Seconds Subsidiary Dial at six o'clock

Box: No

Papers: No

Gross Weight: 62.7 grams

No long-term tests have been performed and accuracy cannot be guaranteed. A full service is advised on all watches and pocket watches once purchased.

We are unable to confirm mechanical replacements or imperfections to the movement, case, dial, pendulum, separate base(s) or dome.

Watches with water-resistant cases may have been opened to examine movements; no warranties are given regarding their water resistance.

It is also important to note that we cannot guarantee the authenticity or originality of individual components, such as wheels, hands, crowns, crystals, screws, bracelets, and wrist bands, since subsequent repairs and restoration may have changed the original components. Also, we cannot guarantee the authenticity or originality of any engraving or re-engraving on watch cases, case backs, bracelets, straps or internal movements. **£500-700**



Fine Jewellery, Watches & Silver, 20th Nov, 2025 09:30

336

Birch of Fenchurch St, London

An 18ct Gold Open Face Pocket Watch

Year: Hallmarked London 1840 (Maker's Mark William Reeves?)

Case Material: 18ct Yellow Gold

Case Diameter: Approximately 40mm

Dial: Engine Turned, with Matted Chapter Ring, Gold-Tone Breguet Hands

Numerals: Roman, Minute Track

Movement: Key-Wound Fusee Cylinder Movement, No1009

Gross Weight: 62.6 grams

No long-term tests have been performed and accuracy cannot be guaranteed. A full service is advised on all watches and pocket watches once purchased.

We are unable to confirm mechanical replacements or imperfections to the movement, case, dial, pendulum, separate base(s) or dome.

Watches with water-resistant cases may have been opened to examine movements; no warranties are given regarding their water resistance.

It is also important to note that we cannot guarantee the authenticity or originality of individual components, such as wheels, hands, crowns, crystals, screws, bracelets, and wrist bands, since subsequent repairs and restoration may have changed the original components. Also, we cannot guarantee the authenticity or originality of any engraving or re-engraving on watch cases, case backs, bracelets, straps or internal movements. **£700-900**



Fine Jewellery, Watches & Silver, 20th Nov, 2025 09:30

337

Hermann Edward de Pury
An 18ct Yellow Gold Open Face Pocket Watch
Reference: 24160
Year: Hallmarked 1907
Case Material: 18ct Yellow Gold
Case Diameter: Approximately 30mm
Dial: White Enamel, Poire Hands
Numerals: Black Roman Numerals, Minute Track
Crown: Fluted
Movement: Keyless Jewelled Movement, adjusted to five positions
Box: No
Papers: No
Gross Weight: 30.0 grams
No long-term tests have been performed and accuracy cannot be guaranteed. A full service is advised on all watches and pocket watches once purchased.
We are unable to confirm mechanical replacements or imperfections to the movement, case, dial, pendulum, separate base(s) or dome.
Watches with water-resistant cases may have been opened to examine movements; no warranties are given regarding their water resistance.
It is also important to note that we cannot guarantee the authenticity or originality of individual components, such as wheels, hands, crowns, crystals, screws, bracelets, and wrist bands, since subsequent repairs and restoration may have changed the original components. Also, we cannot guarantee the authenticity or originality of any engraving or re-engraving on watch cases, case backs, bracelets, straps or internal movements. **£400-600**



338

A Finlay & Field of Glasgow; An 18ct gold open-faced key-wound pocket watch, Sheffield 1916(?), the fusee movement with lever escapement and compensated balance, numbered 44576, the white enamel "Roman" dial with secondary dial at 6 o'clock. The engine turned case with an armorial crest, fitted with a circular loop suspension and winding key, 75.5 grams gross weight, 50mm diameter.
No long-term tests have been performed and accuracy cannot be guaranteed. A full service is advised on all watches and pocket watches once purchased.
We are unable to confirm mechanical replacements or imperfections to the movement, case, dial, pendulum, separate base(s) or dome.
Watches with water-resistant cases may have been opened to examine movements; no warranties are given regarding their water resistance.
It is also important to note that we cannot guarantee the authenticity or originality of individual components, such as wheels, hands, crowns, crystals, screws, bracelets, and wrist bands, since subsequent repairs and restoration may have changed the original components. Also, we cannot guarantee the authenticity or originality of any engraving or re-engraving on watch cases, case backs, bracelets, straps or internal movements. **£800-1,200**



Fine Jewellery, Watches & Silver, 20th Nov, 2025 09:30

339 Smith & Son - An 18ct Gold Full-Hunter Pocketwatch

Serial: 79401

Year: Hallmarked 1901

Case Material: 18ct Yellow Gold

Case Diameter: Approximately 55mm

Dial: White Enamel, Poire Hands

Numerals: Black Roman Numerals, Minute Track

Movement: Keyless, marked '97X2'

Box: No

Papers: No

Gross Weight: 123.5 grams

No long-term tests have been performed and accuracy cannot be guaranteed. A full service is advised on all watches and pocket watches once purchased.

We are unable to confirm mechanical replacements or imperfections to the movement, case, dial, pendulum, separate base(s) or dome.

Watches with water-resistant cases may have been opened to examine movements; no warranties are given regarding their water resistance.

It is also important to note that we cannot guarantee the authenticity or originality of individual components, such as wheels, hands, crowns, crystals, screws, bracelets, and wrist bands, since subsequent repairs and restoration may have changed the original components. Also, we cannot guarantee the authenticity or originality of any engraving or re-engraving on watch cases, case backs, bracelets, straps or internal movements. **£1,500-2,000**



Fine Jewellery, Watches & Silver, 20th Nov, 2025 09:30

340

Omega

A Full Hunter Sportsman's Chronograph Stop Watch Pocket Watch

Serial: 4012205 (To Movement)

Year: circa 1930s

Case Material: '585' (Case stamped internally with Swiss Squirrel Mark indicating 14ct)

Case Diameter: Approximately 50mm

Dial: White, Gilt Poire Hands

Numerals: Black Arabic Numerals, Minute Track

Complication: Central Sweep Flyback Stop Watch Hand, Seconds Subsidiary Dial at nine o'clock, Additional Subsidiary Dial at three o'clock not currently in working order.

Movement: Signed Swiss Lever Movement marked '4012205'

Gross Weight: 91.1 grams

No long-term tests have been performed and accuracy cannot be guaranteed. A full service is advised on all watches and pocket watches once purchased.

We are unable to confirm mechanical replacements or imperfections to the movement, case, dial, pendulum, separate base(s) or dome.

Watches with water-resistant cases may have been opened to examine movements; no warranties are given regarding their water resistance.

It is also important to note that we cannot guarantee the authenticity or originality of individual components, such as wheels, hands, crowns, crystals, screws, bracelets, and wrist bands, since subsequent repairs and restoration may have changed the original components. Also, we cannot guarantee the authenticity or originality of any engraving or re-engraving on watch cases, case backs, bracelets, straps or internal movements. **£1,000-1,500**



Fine Jewellery, Watches & Silver, 20th Nov, 2025 09:30

341 Tiffany & Co - A Rare and Fine Skeletonised Pocket Watch

Year: circa 1985

Serial: 3009 (To Movement)

Case Material: '750' (Stamped with Swiss Helvetia Head indicating 18ct) (Bow marked with 'W W' within a Lozenge Cartouche)

Case Diameter: Approximately 40mm

Dial: Skeletonised, Pointed Baton Hands

Crown: Cabochon-set

Movement: Tiffany & Co Keyless Gilt-Finished Jewelled pallet Lever Adjusted Movement, marked 'N.3009'. Visible between two crystals. The movement highly detailed with foliate engraving.

Box: No

Papers: No

Gross Weight: 29.0 grams

No long-term tests have been performed and accuracy cannot be guaranteed. A full service is advised on all watches and pocket watches once purchased.

We are unable to confirm mechanical replacements or imperfections to the movement, case, dial, pendulum, separate base(s) or dome.

Watches with water-resistant cases may have been opened to examine movements; no warranties are given regarding their water resistance.

It is also important to note that we cannot guarantee the authenticity or originality of individual components, such as wheels, hands, crowns, crystals, screws, bracelets, and wrist bands, since subsequent repairs and restoration may have changed the original components. Also, we cannot guarantee the authenticity or originality of any engraving or re-engraving on watch cases, case backs, bracelets, straps or internal movements. **£5,000-7,000**



Fine Jewellery, Watches & Silver, 20th Nov, 2025 09:30

- 342 **Cartier - A Montre Couteau, Keyless Minute Repeater Pocket Watch, in a typical "Knife-Edge" case with oval suspension.**
Reference: 5894
Serial: 3454
Year: circa 1910s
Case Material: 18ct Yellow Gold (Case and case back marked internally with French eagle's head indicating 18ct Gold, established 1838; Case back with white enamel monogram 'MS' to the exterior)
Case Diameter: Approximately 49mm
Dial: Gilt, Blued Breguet Hands
Numerals: Black Arabic Numerals, Minute Track
Movement: 15''' Movement, Jewelled, Keyless Manual-Wind
Complication: Clear Tonal Minute Repeating Mechanism, Seconds Subsidiary Dial at six o'clock
Box: No
Papers: No
Gross Weight: 64.0 grams
Handed down through the family. It is believed to have belonged to the vendor's great great grandfather, who was a financial advisor to Tsar Nicholas II of Russia. Family members fled St Petersburg with the watch in 1920, during the Russian Revolution, and settled in France.
 No long-term tests have been performed and accuracy cannot be guaranteed. A full service is advised on all watches and pocket watches once purchased.
 We are unable to confirm mechanical replacements or imperfections to the movement, case, dial, pendulum, separate base(s) or dome.
 Watches with water-resistant cases may have been opened to examine movements; no warranties are given regarding their water resistance.
 It is also important to note that we cannot guarantee the authenticity or originality of individual components, such as wheels, hands, crowns, crystals, screws, bracelets, and wrist bands, since subsequent repairs and restoration may have changed the original components. Also, we cannot guarantee the authenticity or originality of any engraving or re-engraving on watch cases, case backs, bracelets, straps or internal movements. **£8,000-12,000**



- 343 An enamelled pillbox, of circular form, the cover decorated with a navy blue and cream enamel motif of the St. Mark's Clock, with an applied hand, yellow metal bearing Italian assay marks '750', 3.0 cm wide, 26.2 grams. **£1,200-1,800**



Fine Jewellery, Watches & Silver, 20th Nov, 2025 09:30

- 344 A Viennese ormolu and hard enamel horse-drawn coach form trinket box, Vienna, circa 1880s, the body of the carriage with enamel "Romantic" panels of lovers in landscapes with hinged cover, trunk and footbox with velvet-lined interiors and glazed with bevelled glass panels, 18 cm wide x 9.5 cm deep x 10 cm overall height.
Notes from the vendor "In 1938 on Kristellnacht (October 9th) when the Nazi's raided homes and shops and burned down synagoguesMy grandparents maid had informed on them to her boyfriend who was in the SS. They raided their apartment, stealing and smashing things as they went, and the coach was thrown out of the window. My uncle, then aged 8, was devastated and after they'd left he ran down to the street to retrieve it. It was amazingly undamaged. Both my uncle and my mother who was 3 years older were sent on the kinder transport to UK. My mother was taken to a Dr. Barnados home before being re-united with her mother who arrived 9 months later.
But my uncle was adopted as that was the only way they could get him out of Germany to safety. He was brought up by a lovely family in Yorkshire but he was damaged by the whole experience as he was so young.
My grandparents also managed to escape. First my grandmother, who came via the Red Cross as a 'domestic' which was one of the only ways of getting in. Then my grandfather who was smuggled through Amsterdam with his brother in the boot of a commercial vehicle and caught a ship to England. On arrival they were both arrested as enemy aliens and interned in the Isle of Man until 1942." **£1,000-1,500**



- 345 Joseph Cheret. A pewter chamberstick, with figural mask carrying handle and oval-shaped dish, the nozzle supported by a cast cherub. 15.5cm high x 18cm wide. Signed and numbered; 'Joseph Cheret' and with a foundry mark 'Soleau Paris 1894.' **£400-600**



- 346 A cased collection of ten silver medallions. 'The Hall of Fame for Great Americans' heavily cast in fine 994 silver, 18.7 oz. 582 grams. **£600-800**



Fine Jewellery, Watches & Silver, 20th Nov, 2025 09:30

- 347 A "Mid Century Vintage" Danish sterling silver entre stand with three enamel bowls by E. Hingelberg Aarhus, of Denmark, each removable boteh dish with cobalt blue hard enamel interiors, the frame of angular design with handle, 30.9 ozt, 961 grams gross weight. 34 cm wide. **£300-500**



- 348 A presentation cased pair of tall Champagne flutes of trumpet form, Sheffield 2003, by Carr's of Sheffield. each with fire gilt interior over knopped stems and spreading disc feet. 14.3 ozt, 445 grams combined weight, 30.5 cm overall height. **£400-600**



- 349 Two modern silver brandy goblets and a "Low-Ball" whiskey tumbler of similar vintage, each with fire-gilt interior, 10.4 ozt, 328.8 grams gross weight **£250-350**



- 350 A set of six 20th-century spun silver wine goblets, Birmingham 1975, probably by J. Howell and Co. With globular bodies and knopped stems over spreading disk feet. 30.1 ozt, 937.9 grams gross weight of silver, 13.6 cm high. **£600-800**



- 351 **In the manner of Jean-François Balzac of Paris**, A pair of French cast silver and silver gilt trencher salts. mid-18th century, with lobed bodies and shaped skirts bordered with raised Vitruvian scrolls and anthemion, French assay test marks. 6.64 ozt, 206.7 grams combined weight, 77 mm long. Please note, unless otherwise stated, all lots have been surface tested using an electronic tester, which is not a guarantee of metal purity. **£150-250**



Fine Jewellery, Watches & Silver, 20th Nov, 2025 09:30

- 352 A silver jewellery box, kidney-shaped with engine-turned cover and velvet interior and on four leaf-capped pad feet, Birmingham 1918 by white metal snuff box (probably silver) and a novelty silver rocking horse **£200-300**



- 353 A late Victorian heavy-gauge silver baluster vase, London 1895, maker indistinct, with a cast and applied satyr head decorated rim over a body heavily chased with 18th-century scenes of bucolic life, over a domed, spreading disc foot. 9.7 ozt, 302 grams **£250-350**



- 354 An agglomeration of wine-related silver items, including a 20th-century wine funnel, taste vin, two drip collars, and two wine bottle bungs, two whiskey, port, kummel port and brandy decanter collars and other items. 7.28 ozt, 226.7 grams gross weight of weighable silver **£250-350**



- 355 An Irish silver potato ring, of traditional Irish form, circular with bar-pierced and swag chased sides, and later wooden liner; Dublin 1928 by T Weir & Sons. 10cm high x 20 cm wide at base. 328 grams, 10.5ozt **£200-300**



- 356 A silver Besamin spice tower of traditional form with a tall cone and a sphere and a Star of David finial. London 1964 by A Taite & Sons, Ltd, 26.2cm; together with three large white metal Kiddush cups and six smaller cups and a tray, another smaller, and a gold-pated Hanukkah menorah. Most stamped '925'. Gross weight weighable 870 grams, 28ozt **£300-500**



Fine Jewellery, Watches & Silver, 20th Nov, 2025 09:30

- 357 A large pair of hollow silver Corinthian column candlesticks, London 1941 by R.S, maker listed but unattributed, with tapering octagonal section shafts over ogee moulded bases with paterae and swag embossing. 32 cm overall height, together with two other silver candlesticks. 823.1 grams, the primary items alone; others are loaded. **£300-500**



- 358 A pair of silver salvers, circular with scalloped shell and beaded borders, on three scrolling feet, commemorative inscriptions to centres. Birmingham 1964 by Asprey and Co, over-stamping J.B. Chatterly and Sons. 23cm diam. 845 g, 27.2ozt. **£500-700**



- 359 A late Victorian small silver hip flask, London 1894 by Gold & Silversmiths, with a hinged pommel cover, the body with a push-fit "Nip-Cup", bearing an armorial crest, 4,82 ozt, 150 grams, 11 cm long. **£100-150**



- 360 A silver salver, circular with shaped beaded border and on three ball and claw feet. Commemorative engraving to centre. Sheffield 1989 by Garrard & Co. 20cm diam., 350grams, 11.3ozt. **£200-300**



- 361 A heavy-gauge silver two-handle sugar and matching milk jug, Sheffield 1912 and later, by Walker & Hall, and a cased set of six golfing teaspoons with crossed club emblems. 20.3 ozt, 634.5 grams gross weight of silver. **£200-300**



Fine Jewellery, Watches & Silver, 20th Nov, 2025 09:30

- 362 An Edwardian silver-mounted glass inkwell, the semi-spherical inkwell overlaid with repoussé cartouches depicting a woman in a pastoral setting, the hinged cover with an aperture for a pocket watch and decorated to the cover with lovers in a rural scene. London 1905 by William Comyns, together with a small silver pill box, Birmingham 1971 **£150-250**



- 363 George Unite of Birmingham, a silver travelling/pocket apple corer, Birmingham 1877 by George Unite. The hollow handle of plain tapering form conceals the blade when not in use, 1.4 ozt, 32.4 grams, 14 cm long, 8 cm when enclosed in the handle.
See link for similar. **£100-150**



- 364 An Edwardian cased set of silver and mother-of-pearl fruit knives and forks for twelve settings, Sheffield 1904, by Henry Hobson & Sons, Unweighable. **£150-250**



- 365 A late Victorian silver ewer, the bulbous body with a scrolling foliate upper border and conforming skirt foot, scrolling thumbpiece and stylised intertwined naturalistic handle, London by Peter Henderson Deere for Watheston, London 1897. 26.5cm height, 1042grams, 33.5ozt. **£300-500**



- 366 A silver-topped and ebonised undertakers' processional staff, Sheffield 2000, by Perry Glossop & Co, the pommel with engraved decoration the ebonised shaft terminating in a deep silver ferrule with brass saving tip. 125 cm long **£100-150**



Fine Jewellery, Watches & Silver, 20th Nov, 2025 09:30

- 367 A large early 20th-century Irish cake basket, Dublin 1912, with Hibernia mark and makers mark for Wakely & Wheeler (Made in London but exported to Dublin and assayed there), the pierced and chased circular body of ogee moulded form, with gadrooned rim and spreading pierced foot. 20.4 ozt, 623.5 grams, 25.5 cm diameter **£500-700**



- 368 A George III silver baluster tankard, London 1768, probably by William Tuite, with later embossed flowering censer decoration, the leaf-capped handle supported on a similarly decorated spreading disk foot. housed in a tooled Morocco leather travel case. 10.6, 331.6 grams, 11.7 cm overall height. **£600-800**



- 369 A pair of reproduction George II style cast silver candlesticks, with knopped stems and shell decoration to removable nozzles, and hexagonal bases. 23cm high. Birmingham 1962 and 1963 by J B Chatterley & Sons Ltd. 1137 grams, 36.5ozt. **£400-600**



- 370 Edward, Edward junior, John & William Barnard, a good silver gilt sugar urn of basket form, London 1843, the faux basket woven form with meandering fruiting vines and leaves about its body and domed circular base, (Liner Missing), 16.6 ozt / 470.6 grams, 14.0cm diameter x 14.0cm high. **£400-600**



- 371 A 20th-century Sheffield silver salver, Sheffield 1992 by RAL, the circular body with cococo piecrust moulded edge, supported by three leaf scroll feet, 17.16 ozt, 533.9 grams, 26 cm diameter **£300-500**



Fine Jewellery, Watches & Silver, 20th Nov, 2025 09:30

- 372 A Victorian silver three-piece bachelor's tea set, Sheffield 1885 by John Round, the teapot of bullet form, accompanied by a small baluster cream jug and simple sugar basin, all with profuse floral chasing. 13.2 ozt, 405.2 grams gross weight, 16 cm width of teapot.
IVORY EXEMPTION CERTIFICATE NUMBER: UMECRRBA
£500-700



- 373 A pair of pierced silver pedestal sweet meat dishes, Sheffield 1895, by Henry Atkin, 17 cm diameter, together with three others of varying design. 23.2 ozt, 722.7 grams gross weight.
£500-700



- 374 A silver fruit bowl, circular with hand-pierced scroll and lattice pierced sides, and a shaped spreading circular foot; with frosted glass bowl, Sheffield 1957 by Emile Viner. 24cm diam x 12cm high. 559 grams, 18ozt **£300-500**



- 375 A modern silver Carrs silver cocktail stirrer/paddle, iced tea straw/spoon, silver and mahogany bottle coaster, and a silver-plated and etched glass cocktail shaker. 2.25 ozt, 70 grams of weighable silver. **£150-200**



- 376 An American Art Nouveau overlaid glass scent bottle; of large inverted conical shape, overlaid with naturalistic pierced scrolling foliage, and conforming pull-off stopper. Numbered and stamped with American silver marks in the form of pseudo Birmingham marks. 23cm high **£150-250**



Fine Jewellery, Watches & Silver, 20th Nov, 2025 09:30

- 377 Two silver vinaigrettes; to include a cartouche-shaped vinaigrette, Birmingham 1843 by Nathaniel Mills, with hinged inner grille and engine turned exterior, 3.5 cm long, together with a probably Birmingham silver "Hunting Horn" vinaigrette by Levi & Salaman, 1.6 oz, 50 grams combined. **£250-350**



- 378 A cased Victorian silver-plated "Albany" pattern fish service for twelve places, with engraved decoration, the decorative fitted case with sycamore crossbanding and amboyna panels. 48.5 cm x 33 cm the box **£100-150**



- 379 A Victorian silver christening mug/ tankard, London, 1861, by Robert Harper, together with a cased guilloche enamel demi tasse coffee spoons, preserve spoon and other items of silver and plate, 9.9 oz, 308 grams of weighable silver **£250-350**



- 380 A suite of four silver pedestal bonbon dishes, Birmingham 1928, by Blanckensee and son, with serpentine rims and pierced decoration, over loaded spreading feet. 9.5 cm diameter. **£100-200**



- 381 A 20th-century heavy-gauge silver cigarette case, a hook bookmark, an envelope stamp case, a heavy silver cigarette case tabletop vester cover, heavy cast silver "Knight" paper knife and other hallmarked silver. 13.5 oz, 318 grams gross weight of weighable silver. **£200-300**



Fine Jewellery, Watches & Silver, 20th Nov, 2025 09:30

- 382 A pair of early 20th-century silver vases; of hexagonal panelled form, with scroll-pierced and reeded borders, on a raised, angled hexagonal base. Sheffield 1912 by Walker and Hall; 30cm high. 754g, 24.3 ozt. **£500-700**



- 383 Benjamin Smith. A silver claret jug, baluster form with applied trailing vine decoration, a naturalistic cast vine handle and a conforming finial to shaped, hinged cover; on a pedestal foot with a trailing vine border. London 1847 by Benjamin Smith. 33cm high; 1269 grams, 40.8ozt. **£1,500-2,000**



- 384 A silver tea tray, oval with fluted border and integral side handles, Sheffield 1923 by Walker and Hall, 53cm x 32cm, 50.1ozt, 1558g; together with a silver-plated tray, shaped rectangular with gadrooned borders and angled side handles. by Atkins of Sheffield. 68cm x 43cm **£1,000-1,500**



- 385 A 20th-century silver three-piece tea set of panelled circular pedestal form, Birmingham 1931, IR&S makers mark unlisted, the teapot with pearwood fittings. 31.1 ozt, 970 grams combined gross weight, 27 cm width of teapot. **£600-800**



- 386 A small collection of silver dining table appointments, including two cased matched pairs of silver napkin rings, a laurel wreath-engraved Christening mug, and a small salt cellar with blue glass liner. 7.2 ozt, 225.5 grams, gross weight of silver. **£100-150**



Fine Jewellery, Watches & Silver, 20th Nov, 2025 09:30

- 387 An agglomeration of small silver curios and decorative items, including a pair of dice, four silver fish and chip forks, a faux cow horn honey dripper with bee-shaped mount, a citrus rind scorer, a napkin keeper clip, A set of six 800 silver Rolex Bucherer "Interlaken" spoons and other items. 7.46 ozt, 232.2 grams of weighable silver. **£200-300**



- 388 An early 20th century silver, footed fondant basket of pierced lobed form, Sheffield 1911 by James Dixon & Sons, 18 cm diameter, together with four other bonbons and sweet meat dishes, 21.5 ozt, 670.2 grams gross weight of silver **£400-600**



- 389 A 20th-century silver four-piece tea set, Birmingham 1939 by G.Bryan & Co, the set comprising sugar bowl, milk jug, hot water and teapot, with pearwood fittings to the girdled baluster bodies, 52.4 ozt, 1.63 kg, 28 cm length of the teapot. **£800-1,200**



- 390 A pair of five-light candelabra branches, with reeded scrolling branches and vase-form sconces with detachable nozzles. Two additional nozzles, London 1959 by R.W.B for Harrods. 34cm x 14.5cm. Gross weight 2462 grams, 79.2ozt. **£800-1,200**



- 391 A quantity of silver-mounted photograph frames, including a set of three with reed and tie borders, 28.5cm x 23.5cm; together with a pair of frames with moulded borders, 32cm x 27cm; two further pairs of photograph frames, and five single frames. **£400-600**



Fine Jewellery, Watches & Silver, 20th Nov, 2025 09:30

- 392 Of golfing interest; a novelty silver "Golf Club" corkscrew bottle opener together with a golfing "Tee" propelling bridge pencil and another small silver boss, unweighable due to steel components. 25 cm long, the golf club. **£100-150**



- 393 A mixed part canteen of fiddle and thread pattern flatware, some with crests engraved, comprising three tablespoons London 1833 by Robert Hennell; six table forks London 1869 by George Adams, and six dessert forks, mixed dates and makers. Gross weight 1082 grams, 34.8 oz. **£600-800**



- 394 A 20th-century silver, three-sconce table candelabra, Birmingham 1973 maker's mark indistinct, a silver rectangular cigarette server in the form of a supper/cheese box, with a bone handle, Birmingham 1957, Gurnsey type milk can form cream jug, table cruet items, angular toast rack and other items of silver. 21.9 oz, 683 grams gross weight of silver, excluding the loaded candelabra. **£400-600**



- 395 A Victorian silver salver, with shaped scroll and shell border, and flat-chased centre around a central engraving, on three scrolling bracket feet. 20cm diam. London 1859 by Daniel & Charles Houle. 297grams, 9.5oz **£200-300**



- 396 An early 21st-century silver-headed golfing putter, Sheffield 2002, by C.J.Vander & Co, with a cast silver head, Japaned steel shaft and perforated leather, "Golf Pride" grip. 92 cm long, 468.8 grams entire. **£150-200**



Fine Jewellery, Watches & Silver, 20th Nov, 2025 09:30

- 397 A pair of 20th-century fine silver (951) hollow fighting cocks with engraved plumage, marked "951", 9 cm long, and a Sterling silver faced oval table mirror with embossed scrolls and wooden base, 19 cm long, 43. Grams of weighable silver, just the fighting cocks. **£250-350**



- 398 A cased set of Victorian cast silver strawberry serving spoons, London 1893 maker not registered/identified, with armorial, figurative and rustic vine terminals and shanks, in the Flemish taste, all bowls with fire gilt interiors, one with perforations for dredging. 5.14 oz, 160 grams combined **£200-300**



- 399 A heavy-gauge silver Arts & Crafts design tripod bonbon dish, London 1906, maker WNS unlisted, with circular pan supported on curvy linear cabriole legs, together with three kiddush cups in sizes, a small pepperette and a square heavy-gauge silver ashtray. 17.5 oz, 544.4 grams of silver **£250-350**



- 400 An early 20th-century silver pedestal, bachelor's teaset of pedestal form, Birmingham 1912, by Rabone & Rabone, together with a long vesta box cover, two silver mustard spoons, a cigar cutter, a silver-plated sugar skuttle and shovel, a sauce ladle, an American Queen Anne style hotwater pot, 29.1 oz, 905 grams gross weight of weighable silver. **£400-600**



- 401 A Scottish silver baluster hot water pot and cover, Glasgow 1927, by Pearce & Sons, with pagoda finial to the hinged cover supported by four scroll feet emanating from stylised oak leaf cut card work, 22 cm overall height, together with five lotus pattern soft fruit spoons. 28.6 oz, 890.4 grams combined gross weight **£500-700**



Fine Jewellery, Watches & Silver, 20th Nov, 2025 09:30

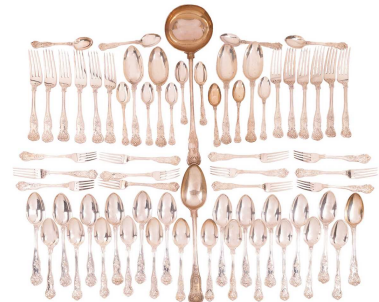
- 402 A Norwegian canteen by Thorvald Marthinsen Sølvvarefabrik, Tonsberg. The Art Deco style canteen comprising: eight table forks, eight dessert forks, eight dessert spoons, eight table knives with stainless steel blades, eight dessert knives with stainless steel blades, and three serving pieces. All stamped '830', and with maker's mark. Gross weight weighable. 955 grams, 30.7ozt complete with original purchase brochure. **£600-800**



- 403 A blended part silver canteen of "Old English" and "Hanovarian" flatware by mixed hands and of varying dates, the agglomeration comprises eleven table forks, seven dessert forks, nine dessert spoons, and ten soup spoons. 82.8 ozt, 2.58 kg **£1,200-1,500**



- 404 A matched part canteen of silver "Grape" pattern flatware, together with a "Queen's" soup ladle and a basting spoon, various dates and makers including London 1883 by Holland, Sons & Slater and others. The part canteen comprises: twelve table forks, twelve dessert forks, twelve dessert spoons, fourteen soup spoons, twelve teaspoons, two intermediate soup spoons, and two "Queen's" pattern items as mentioned above. 5051.2 grams / 162.4 ozt **£2,000-3,000**



- 405 An Art Deco silver and silver gilt 'recipe' cocktail shaker; of tapering cylindrical form, with strainer section, the gilded inner sleeve rotating to show the recipes for fifteen cocktails, height 27.5cm, Birmingham 1933 by William Suckling Ltd. With a patent number 398119 and stamped 'other patents pending'. **£2,000-3,000**

